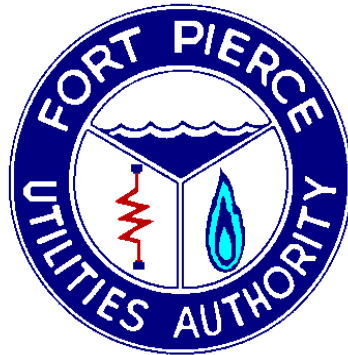


Understanding Residential Utilities



**Fort Pierce Utilities Authority
206 South Sixth Street
Fort Pierce, Florida 34950
772-466-1600**

Prepared by

**Camille S. Yates
Community and Corporate Relations Manager**

FORT PIERCE UTILITIES AUTHORITY

"Committed to Quality"



206 S. 6th Street (34950)
Post Office Box 3191
Fort Pierce, Florida 34948-3191

Phone: (772) 466-1600
Fax: (772) 467-3115

September 25, 2006

Dear Fort Pierce Utilities Customer:

In today's economy, more and more people express concern over the cost of utilities. We at Fort Pierce Utilities (FPUA) are just as concerned about the rising costs and are doing all that we can to keep these costs as low as possible.

In an effort to help our customers understand utilities, we have compiled a report entitled *Understanding Residential Utilities*. We conducted a study of nine residential homes in Fort Pierce to determine the typical utility use for a variety of homes. In the study, FPUA performed home utility energy conservation surveys as well as examined utility data from these nine homes for a two-year period.

Our report, *Understanding Residential Utilities*, summarizes the utility use for each of the nine homes and gives recommendations on improving utility consumption and cost saving measures for each home.

The report also includes two additional sections that we hope will provide more understanding to our customers so they can get a better idea and how FPUA bases its charges. The section called Understanding Residential Utility Bills explains in great detail all charges that may appear on any given bill. The section called Understanding Residential Rates explains all of the rates that may appear on a customer's bill.

This report will be available to customers 24/7 on our Website at www.fpu.com or can be requested through our customer service department. Should customers have any concerns about their bill, they should not hesitate to contact our customer service department at 466-1600, ext. 3900.

Sincerely,

William G. Thiess
Director of Utilities
Fort Pierce Utilities Authority

<u>Table of Contents</u>	<u>Page</u>
List of Figures	iv
List of Tables	vi
Introduction	1
Understanding FPUA's Residential Rates	1
Understanding FPUA's Residential Bill	3
Residential Home Studies	5
Conclusion	43
Appendix A - Calculation of FPUA's Power Cost Adjustment	44
Appendix B - Electric Rate Comparisons of Florida's Municipal Utilities	46
Appendix C - Calculation of FPUA's Purchased Gas Adjustment	48
Appendix D - Detailed Data of Utility Consumption and Cost Incurred in FPUA's Study Homes.	50

<u>List of Figures</u>	<u>Page</u>
Figure 1. - General areas of nine homes that participated in the FPUA study.	5
Figure 2. – Average Bills of all consumption, fuel, fees, taxes, surcharges, and any other services that the customer used for the nine study houses.	6
Figure 3.- Electric Consumption for nine houses during the two-year study period.	7
Figure 4.- Water Consumption for nine houses during the two-year study period.	7
Figure 5.- Natural Gas Consumption for nine houses during the two-year study period.	8
Figure 6. Electric Consumption and Cost for House 1.	10
Figure 7. - Water Consumption and Cost for House 1.	11
Figure 8. - Water Consumption and Wastewater Cost for House 1.	11
Figure 9. – Natural Gas Consumption and Wastewater Cost for House 1.	12
Figure 10. – Summary of All Utilities and Fees for House 1.	12
Figure 11. – Electric Consumption and Cost for House 2.	14
Figure 12. – Water Consumption and Cost for House 2.	15
Figure 13. – Water Consumption and Wastewater Cost for House 2.	15
Figure 14. – Natural Gas Consumption and Cost for House 2.	16
Figure 15. – Summary of All Utilities and Fees for House 2.	16
Figure 16. – Electric Consumption and Costs for House 3.	18
Figure 17. Water Consumption and Costs for House 3.	19
Figure 18. – Water Consumption and Wastewater Costs for House 3.	19
Figure 19. – Summary of All Utilities and Fees for House 3.	20
Figure 20. - Electric Consumption and Costs for House 4.	21
Figure 21. - Water Consumption and Cost for House 4.	22
Figure 22. - Water Consumption and Wastewater Cost for House 4.	22

Figure 23. - Summary of All Utilities and Fees for House 4. <u>List of Figures (cont.)</u>	23
Figure 24. - Electric Consumption and Cost for House 5.	24
Figure 25. - Water Consumption and Cost for House 5.	25
Figure 26. - Water Consumption and Wastewater Cost for House 5.	26
Figure 27. - Natural Gas Consumption and Cost for House 5.	26
Figure 28. - Summary of All Utilities and Fees.	27
Figure 29. - Electric Consumption and Cost for House 6.	28
Figure 30. - Water Consumption and Cost for House 6.	29
Figure 31. - Water Consumption and Wastewater Cost for House 6.	29
Figure 32. - Summary of All Utilities and Fees for House 6.	30
Figure 33. – Electric Consumption and Cost for House 7.	31
Figure 34. – Water Consumption and Cost for House 7.	32
Figure 35. – Water Consumption and Wastewater Cost for House 7.	32
Figure 36. – Natural Gas Consumption and Cost for House 7.	32
Figure 37. – Summary of All Utilities and Fees for House 7.	33
Figure 38. – Electric Consumption and Cost for House 8.	35
Figure 39. – Water Consumption and Cost for House 8.	36
Figure 40. – Water Consumption and Wastewater Cost For House 8.	36
Figure 41. – Natural Gas Consumption and Cost for House 8.	37
Figure 42. – Summary of All Utilities and Fees for House 8.	37
Figure 43. – Electric Consumption and Cost for House 9.	39
Figure 44. – Water Consumption and Cost for House 9.	40
Figure 45. – Summary of All Utilities and Fees for House 9.	40

List of Tables	Page
Table 1 - Utility Services for the nine homes in the FPUA study.	6
Table 2. Results of Electric Meter Reading Monitoring on the Nine Study Homes.	42
Table 3. Results of Water Meter Reading Monitoring on the Nine Study Homes.	42
Table 4. – Sample worksheet used to calculate FPUA’s electric Power Cost Adjustment.	45
Table 5. – Rate Comparisons for Florida’s Municipal Electric Utilities in July 2006 (includes base rate and PCA or Fuel Cost).	47
Table 6. – Detailed History for House 1.	51
Table 7. – Detailed History for House 2.	51
Table 8. – Detailed History for House 3.	52
Table 9. – Detailed History for House 4.	52
Table 10. – Detailed History for House 5.	53
Table 11. – Detailed History for House 6.	53
Table 12. – Detailed History for House 7.	54
Table 13. – Detailed History for House 8.	54
Table 14. – Detailed History for House 9.	55

Introduction

In an effort to create a better understanding with regard to the cost of utilities and what can be done to save money on utility bills, Fort Pierce Utilities Authority (FPUA) has created this report, *Understanding Residential Utilities*.

The report includes three sections. Understanding Residential Rates explains FPUA's rates for all utilities including electric, water, wastewater, natural gas, Internet connections, outdoor lights, and other miscellaneous services. The second section, Understanding Residential Utility Bills gives a detailed explanation on which charges could appear on a utility bill. Finally, the third section contains detailed explanations of studies conducted on nine residential homes in Fort Pierce.

Understanding FPUA's Residential Rates

Rates for FPUA's residential utility customers are the same no matter where the home is located. There are taxes and surcharges that may be charged to the customer depending on the location of the home whether it is in the city or the county.

The following is an explanation of utility rates for residential customers.

Electric

FPUA's electric rate has not changed in 10 years, since 1996. For electric consumption, residential customers are charged a flat monthly fee of \$5.35 plus any consumption used at \$.08277 per kWh consumed.

The customer is also charged for the fuel cost to produce electricity, which is based on customer consumption at the residence. The charge is known as the Power Cost Adjustment or PCA. The PCA fluctuates according to the market-driven fuel costs. FPUA does all it can to keep these fuel costs as low as possible. We joined the Florida Municipal Power Agency so that we could share electrical power and utilize the economies of scale theory. Since we now belong to this agency, we are more able to keep our costs lower than they would have been if we had been relying solely on our local, inefficient and more costly H.D. King Power Plant.

A complicated formula is used to calculate the PCA. The current PCA charge is 0.03088 per kWh of consumption. See Appendix A for the explanation of the formula used to calculate the fuel costs.

All municipal utilities in Florida charge a customer fee, base rate and fuel cost. See Appendix B for rate comparisons.

Water

FPUA's water rate has not changed in 6 years, since October 2000. For water consumption, the residential customer is charged a flat monthly rate of \$16.40 for the first 3,000 gallons. Over 3,000 gallons, the rate is less than a penny (\$.00237) per gallon. Once consumption goes over 10,000 gallons per month, the charge is \$.00296 per gallon and consumption over 15,000 gallons per month is charged at \$.003555 per gallon.

Wastewater

FPUA's wastewater rates have not changed in 3 years, since October 2003. Charges for wastewater are based on the residential customer's water consumption. FPUA charges a flat rate of \$11.09 plus \$.00397 per gallon of water consumed. Once water consumption goes over 10,000 gallons, then a flat rate of \$50.79 is charged. This is the maximum monthly amount that a residential customer is charged for wastewater.

Natural Gas

FPUA changed its natural gas rate in November 2004. For natural gas consumption, residential customers are charged a flat monthly fee of \$10.00 plus any consumption used at \$1.000 per CCF consumed. Any consumption from 101 – 500 CCF is charged at \$0.635 per CCF. The amount of gas flowing residential meter is measured in hundred cubic feet (CCF). The PGA charged is based on the average heat content of the gas delivered to each home—or the number of therms used. One therm is equal to 100,000 British Thermal Units (Btu). One Btu represents the amount of heat needed to raise one pound of water one degree Fahrenheit at sea level. Each bill shows how much gas (CCF) was consumed for the past month.

The customer is also charged for the fuel cost to provide natural gas to customers, which is based on customer consumption at the residence. The charge is known as the Purchased Gas Adjustment or PGA. The PGA fluctuates according to the market-driven fuel costs. FPUA does not make any profit on the cost of gas. Only natural gas cost and the cost to deliver the commodity is included in the calculation. FPUA does all it can to keep these fuel costs as low as possible. FPUA is a member of Florida Gas Utility. Florida Gas Utility was created as a non-profit municipal organization for the sole purpose of reducing the costs of purchased natural gas for its members. This is achieved by providing cost effective gas purchasing and gas management services and by securing long-term stability in fuel costs and supplies. Maximum benefits of bulk purchasing and long-term stability of fuel supplies are best assured by the largest diversity and size of supplies and demands.

A complicated formula is used to calculate the PGA. The current PGA charge is \$.195 per CCF of consumption for September 2006. See Appendix C for the explanation of the formula used to calculate the PGA.

Understanding FPUA's Residential Utility Bill

Many people have a difficult time understanding their utility bills. There are a lot of numbers to decipher including consumption, cost, taxes, and fees. This section will fully explain what may appear on a FPUA residential customer's bill. Not all customers have all of FPUA's utility services, so the bills may vary in that regard. For example, in our study using the nine houses, one house has only water and electric service. The remaining houses all have water, electric, and wastewater. Some have natural gas in addition to the other three services.

In addition to electric, water, wastewater, and natural gas, FPUA also offers outdoor rental lights, Website design and hosting services, Internet services, and Project Care. These FPUA items may also appear on the bill. FPUA also bills on behalf of the City of Fort Pierce for garbage and recycling services. FPUA also bills for taxes and franchise fees on behalf of the City of Fort Pierce and St. Lucie County.

Additional charges that may appear on a customer's bill can include a connection fee, reconnection fee, late payment fee, penalty fee, and payment arrangement.

Charges that may appear on a residential customer bill are listed below.

Utility Tax - FPUA bills on behalf of the City of Fort Pierce, a 10% utility tax on the monthly cost of electric service and a 10% utility tax on the monthly cost of water service. This utility tax is charged to all customers within the city limits.

Garbage and Recycling - FPUA bills on behalf of the City of Fort Pierce a monthly charge for residential garbage collection at \$16.74 and a recycling fee of \$2.35.

Franchise Fee - FPUA bills on behalf of St. Lucie County a franchise fee of 5% on the cost of electric consumption for those residents living outside the city limits. For those living in St. Lucie Village, FPUA bills an 8% franchise fee on behalf of St. Lucie Village.

Surcharges - FPUA bills a surcharge fee of 10% on the cost of electric consumption, 25% on the cost of water consumption, and 25% on the cost of wastewater consumption for those customers living outside the city limits. These surcharges are in place since it is more costly to maintain and operate equipment that is a not within easy access of the city.

Sales Tax & Gross Receipts Tax - FPUA bills on behalf of the State of Florida a 7% electric sales tax and a 6% natural gas tax in addition to .5% for St. Lucie County. Also, FPUA charges gross receipts tax at 2.56% for Electric and gas.

Connection Fees - New FPUA customers are charged a connection fee of \$30.00 if both electricity and water are added at the same time. If just one service is added by a new customer, then the fee is \$15. Existing customers that add new services are charged a \$15.00 connection fee.

Penalty Charges - FPUA charges customers who do not pay a monthly bill by the due date a penalty charge at a cost of 1.5% of the bill.

This report was produced in September 2006. Please call FPUA customer service for updated rates and fees at 772-466-1600, ext. 3072. 4

Reconnection Fee - FPUA charges existing customer who do not pay the monthly bill within 30 days of the due date a reconnection fee of \$35 if utilities are disconnected due to delinquent payment. If FPUA cannot access the meter and reconnection is made at the pole, a fee of \$75 is charged rather than \$35.

Late Fee – FPUA charges customers who are 30 days late in paying their bill, a late fee of \$15.00.

Meter Re-read Fee – FPUA charges customers a fee of \$15 if the customer requests that the meter be read again within the same month.

Payment Arrangements - When an FPUA customer is unable to pay their bill, FPUA may allow a customer to make payment arrangements and pay the past due bill for a mutually agreed upon monthly amount until the bill is paid off. FPUA will allow a customer to make payment arrangements on one bill during a twelve-month period.

Returned Check Fee – FPUA charges customers a \$25 fee for all returned checks up to \$50. if the returned check is \$50 - \$300, then a \$30 is charged. For returned checks over \$300, but under \$800, a \$40 fee is charges and for returned checks over \$800 the fee is 5% of the check amount.

Outdoor Lights - FPUA can install an outdoor rental light at a customer's residence and will charge a rental fee according to the type of fixture installed.

Gas Piping and Installation - FPUA can pipe and install natural gas to a residence and will charge for the service under a payment plan rather than request the amount be paid in one bill.

Home Utility Conservation Survey – FPUA offers a home utility conservation survey at a reduced rate of \$25 to our customers.

Website Hosting and Development - FPUA can design and host web sites and will charge the customer a monthly rate for the service.

Internet Service - FPUA can connect a customer to the Internet and will charge a monthly fee depending on the service requested.

Project Care - An FPUA customer may elect to make a monthly donation to Project Care by either signing up to have their bill rounded up to the nearest dollar or by making a monthly donation for a set amount. The monthly donation amount appears on the bill.

Residential Home Studies

With the permission of the individual customers, FPUA studied nine homes located in various areas throughout its service territory. The map (Figure 1.) below depicts the general locations of the nine residences. To protect the privacy of customers, each house was assigned a number. The individual customer is aware of what their number is and should use the study information to better control utility consumption.

Utility billing for each customer that occurred between August 2004 and July 2006 was analyzed. Home Utility Conservation surveys were conducted at eight of the nine homes. The customer at house number nine was not available for the survey. Recommendations were presented to each customer on actions that would improve utility conservation and thus lower the bill. Also, FPUA began monitoring meter reading for accuracy.

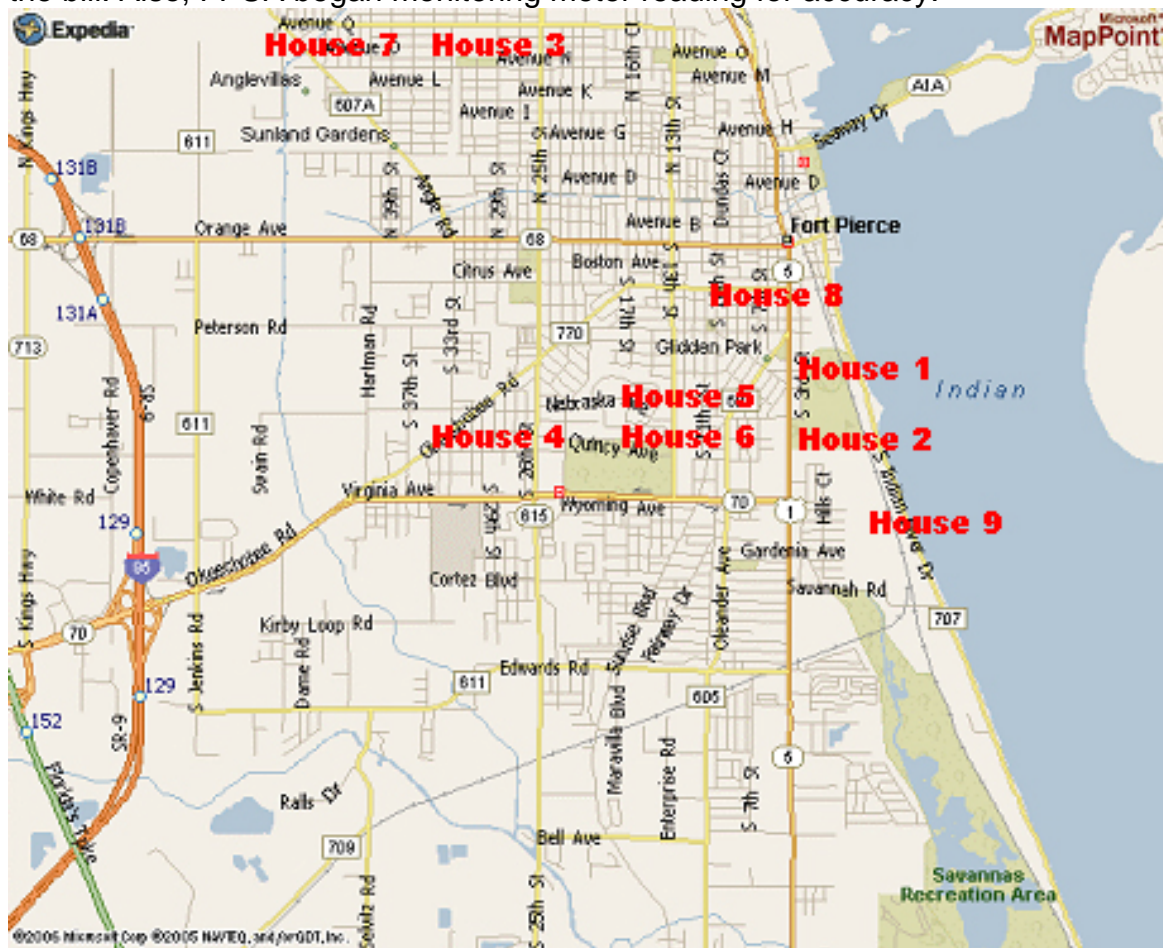


Figure 1. - General areas of nine homes that participated in the FPUA study.

Summary of Utilities -

The average monthly bill ranged between \$232.71 and \$444.08 (Figure 2). This average includes all utility consumption charges, fuel costs, fees, taxes, surcharges (if applicable), city garbage and recycling (if applicable) and any other services that the customers used. A detailed description of all services used is listed under the home description section.

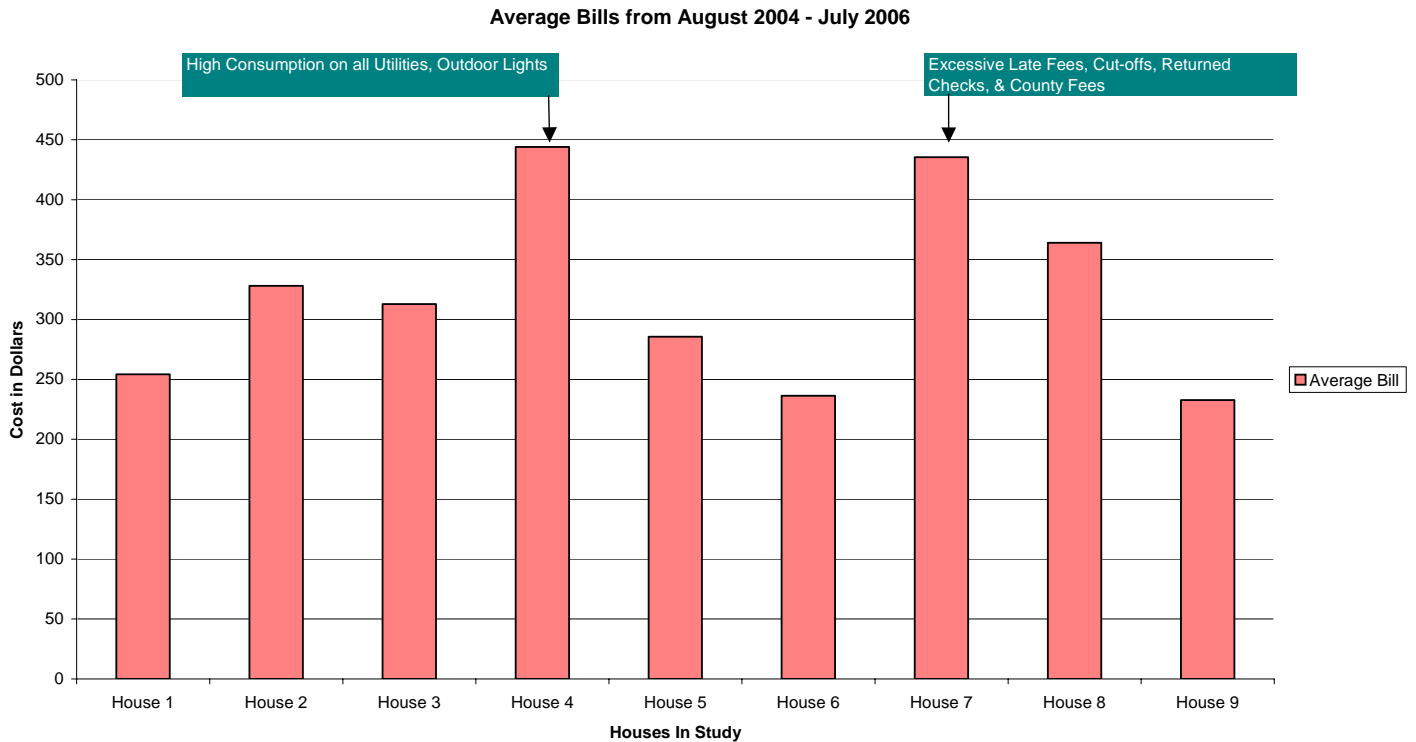


Figure 2. – Average Bills of all consumption, fuel, fees, taxes, surcharges, and any other services that the customer used for the nine study houses.

Nine customers used both electricity and water, eight also had wastewater and four also had natural gas. Two homes were located outside the city (Table 1).

Table 1 - Utility Services for the nine homes in the FPUA study.

House Number	Electrical Service	Water Service	Wastewater Service	Natural Gas Service	Outside the City
1	X	X	X	X	
2	X	X	X	X	
3	X	X	X		X
4	X	X	X		
5	X	X	X	X	
6	X	X	X		
7	X	X	X	X	X
8	X	X	X	X	
9	X	X			

All of the nine homes were compared with respect to utility usage. During the two-year study period, house number one used the least amount of electricity while house four consumed the highest amount (Figure 3). House nine consumed the lowest amount of water while house

four used the highest amount (Figure 4). For natural gas comparisons, house two used the lowest amount while house eight consumed the highest amount (Figure 5).

Electric Consumption Between August 2004 and July 2006

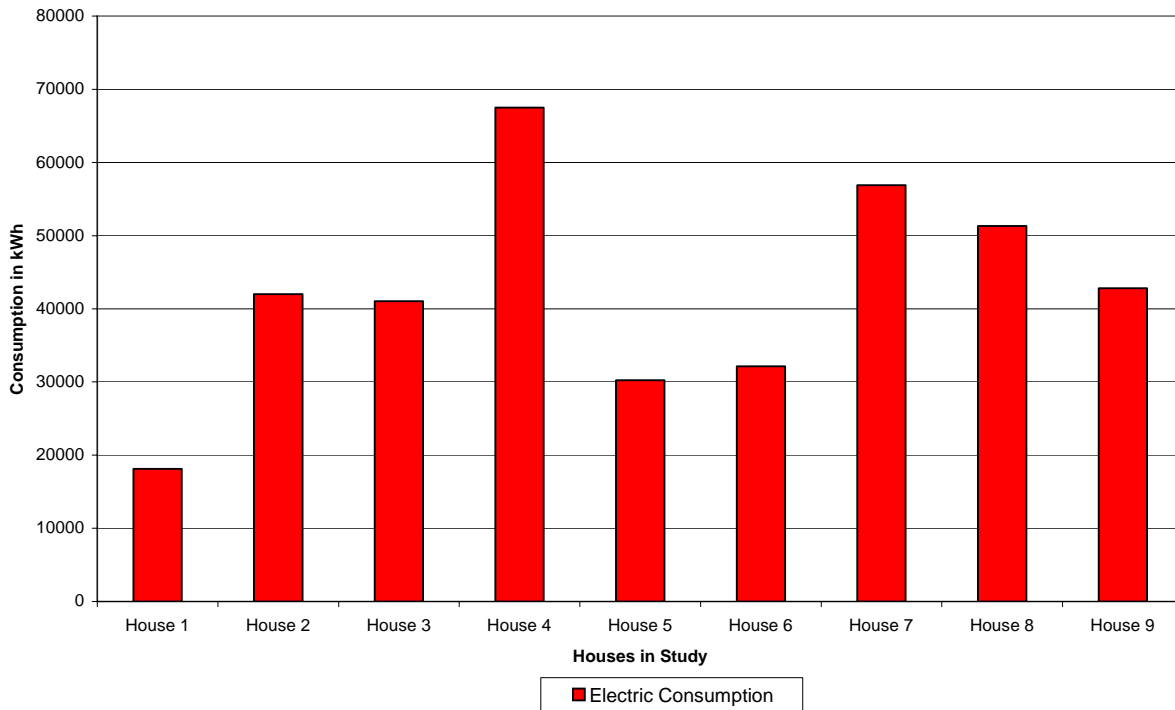


Figure 3.- Electric Consumption for nine houses during the two-year study period.

Water Consumption Between August 2004 and July 2006

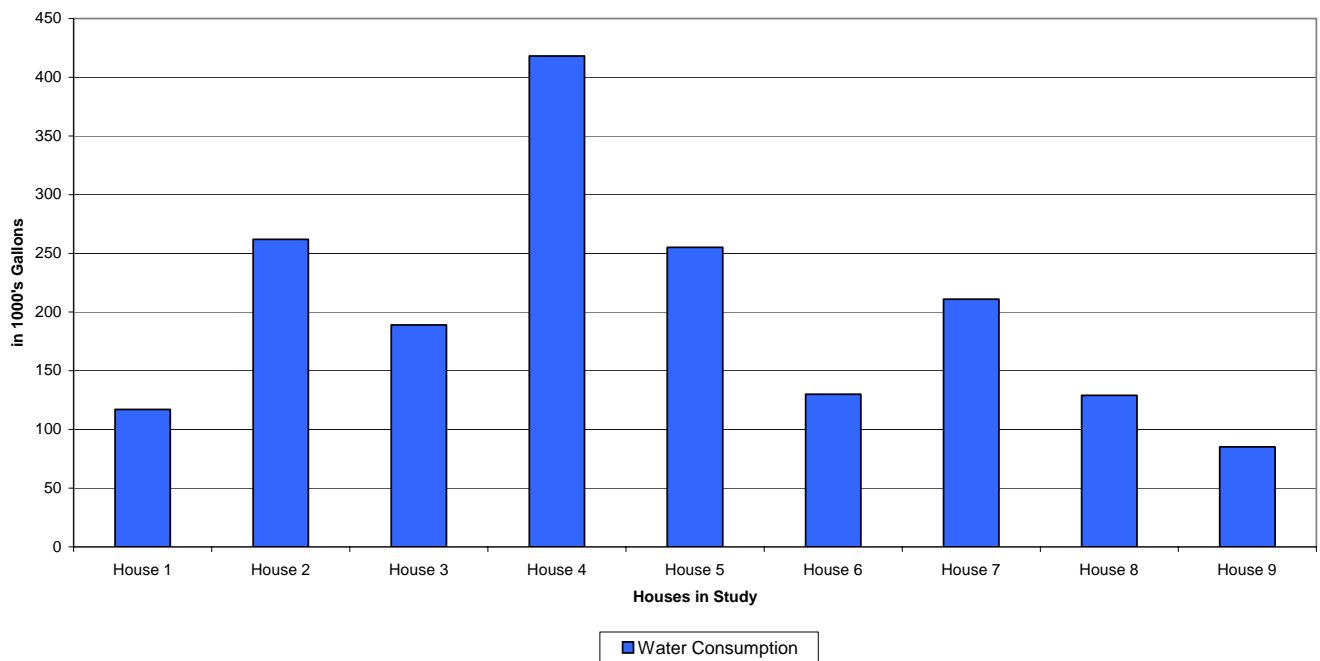


Figure 4.- Water Consumption for nine houses during the two-year study period.

Natural Gas Consumption Between August 2004 and July 2006

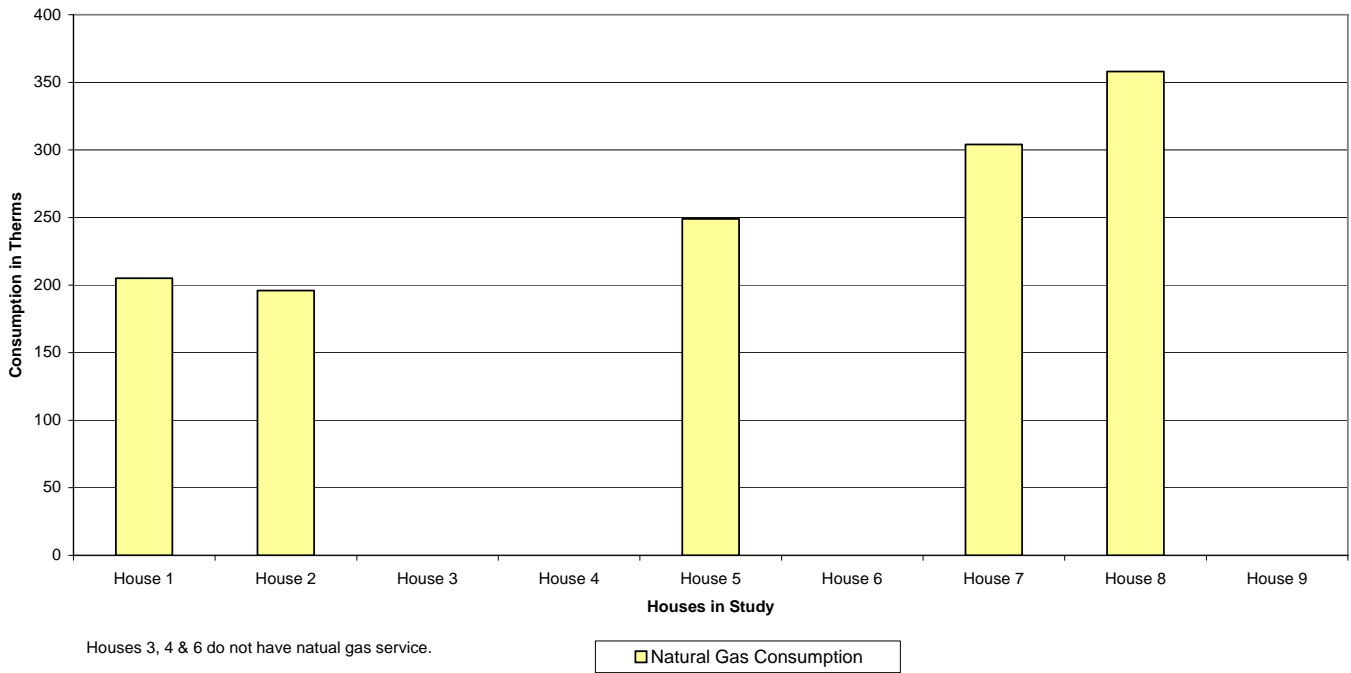


Figure 5.- Natural Gas Consumption for nine houses during the two-year study period.

Detailed Descriptions -

The following section provides detailed descriptions of each home, the utility consumption and other fees paid as well as the survey recommendations as a result of the Home Energy Survey. Detailed data sheets are located in Appendix D.

Abbreviations used in this section are listed below.

EI Cons - Electric Consumption

EI Cost - Cost in dollars for the customer monthly charge, the base rate, and the PCA (if PCA is not broken out separately as in the All Utility graphs) based on consumption

PCA – Power Cost Adjustment based on fuel costs and consumption

W Cons - Water Consumption

W Cost - Cost in dollars for the customer monthly charge and the base rate based on consumption

WW Cons - Wastewater as a result of water consumption

WW Cost - Cost in dollars for the customer monthly charge and the base rate based on consumption

N Cons - Natural Gas Consumption

N Cost – Cost in dollars for the customer monthly charge and the PGA (if PGA is not broken out separately as in the “All Utility” graphs) based on consumption

PGA – Purchased Gas Adjustment

Tax – Utility Tax of 10% for Electric and Water paid to the City of Fort Pierce

County Fee – County Franchise fee as well as electric, water and wastewater surcharges for those outside the city

Fee – May include Penalty Charge, Late Payment Fee, Reconnection Fee, and Returned Check Fee

Misc. – May include Meter Re-read Fee, Connection Charges, Garbage and Recycling for the City of Fort Pierce, Outdoor Lights, Project Care, and Payment Arrangements

When reading the graphs, keep in mind that two hurricanes, Frances and Jean, hit Fort Pierce in September. Due to the damage, FPUA’s meter readers did not take reads in September. Meters were read in October, so most bills sent out in October were for utilities used in August

and parts of September and October. This could have resulted in the October bill being for 45 to 60 days of utility usage.

House 1 -

Year Built: 1956 Square Footage: 1,300 # Bedrooms: 2 # Bathrooms: 1
 The information above came from the St. Lucie County Property Appraiser’s Office

Data analyzed between August 2004 and July 2006

Utility Services Used: Electric, Water, Wastewater, Natural Gas

Average Bill for all services, fees and charges: \$254.29

Highest monthly kWh used: 1,854

Lowest monthly kWh used: 601

Highest monthly water used: 9,000 gal

Lowest monthly water used: 6,000 gal

Highest monthly natural gas used: 35 ccf

Lowest monthly natural gas used: 5 ccf

Consumption and Costs are located in Figures 6 – 10. Detailed Data sheets in Appendix D.

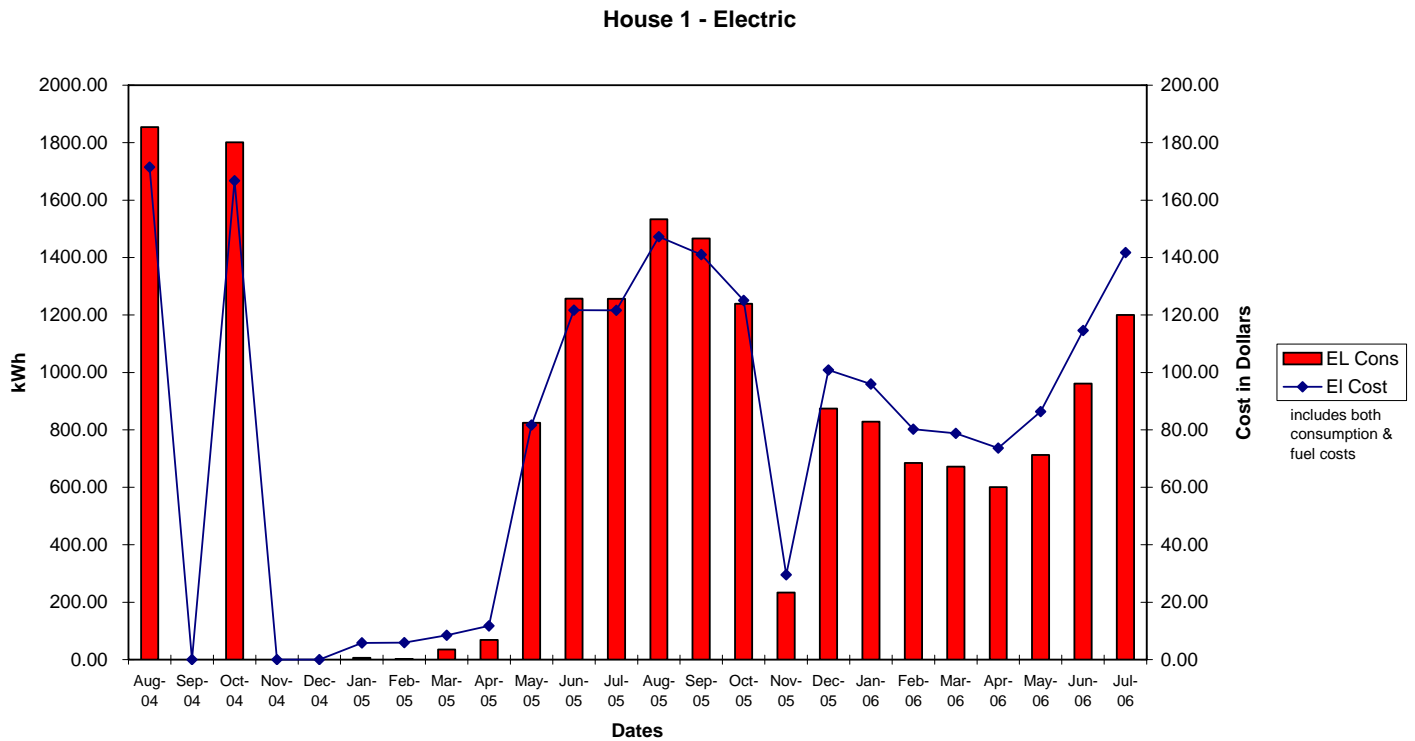


Figure 6. Electric Consumption and Cost for House 1.

House 1 - Water

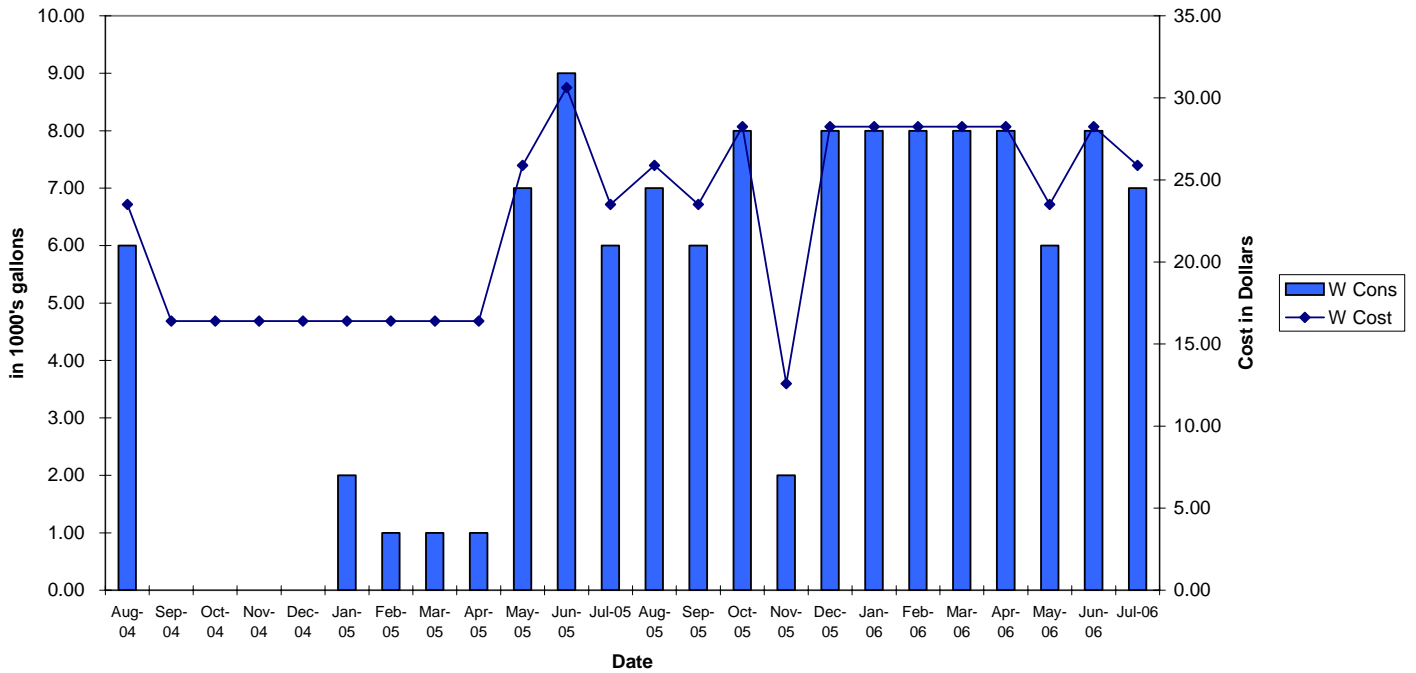


Figure 7. - Water Consumption and Cost for House 1.

House 1 - Wastewater

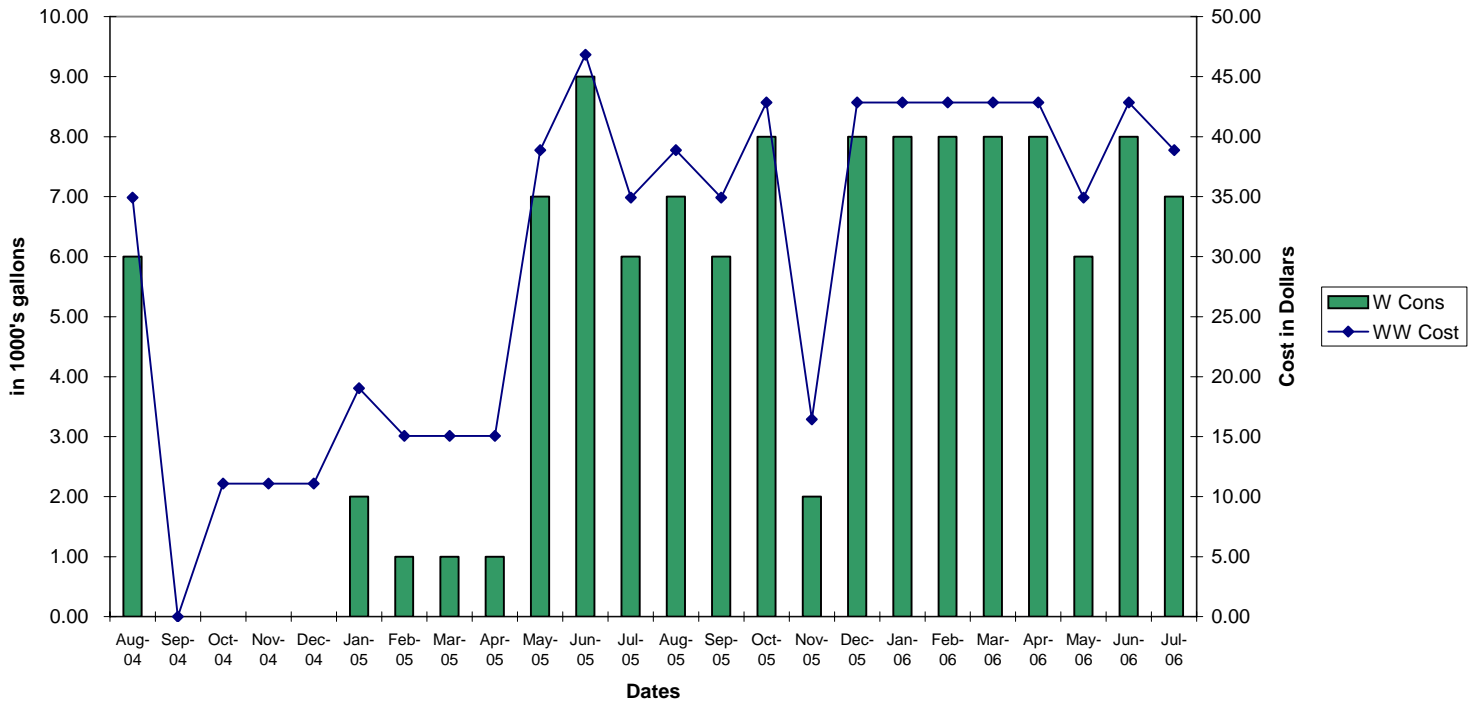


Figure 8. - Water Consumption and Wastewater Cost for House 1.

House 1 - Natural Gas

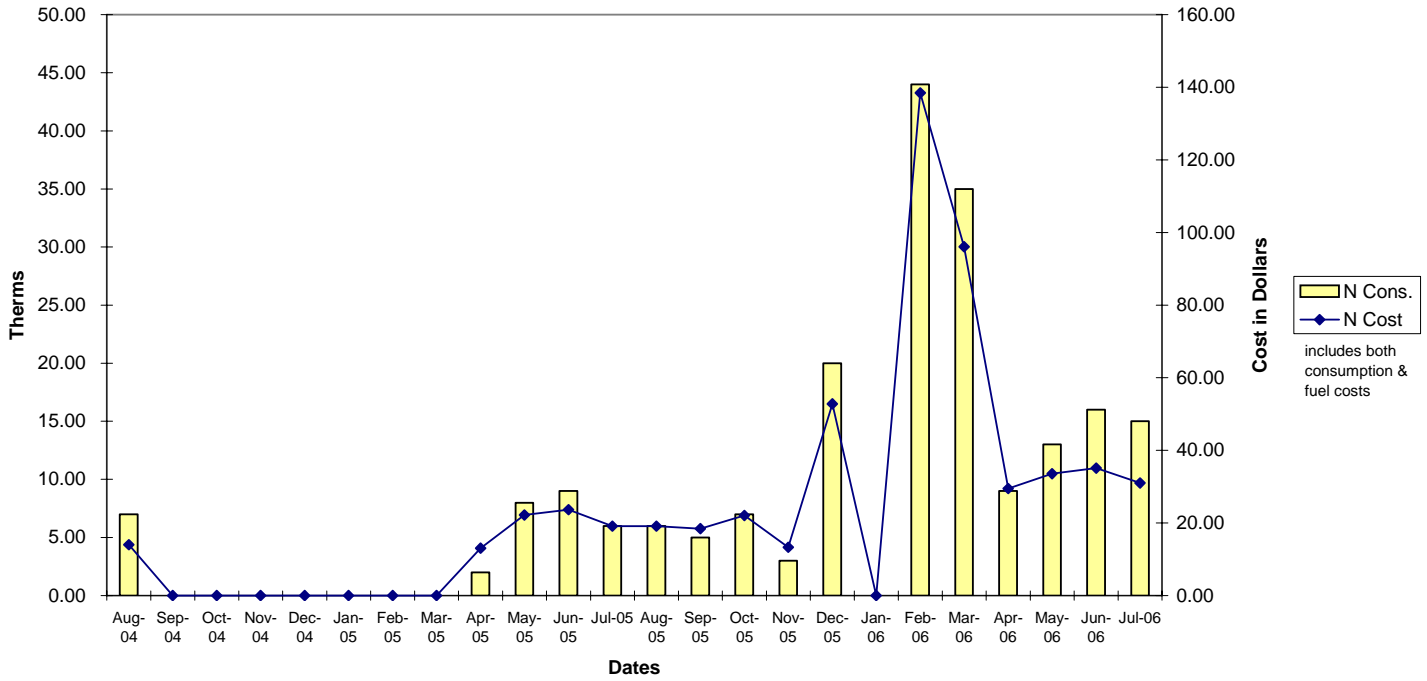


Figure 9. – Natural Gas Consumption and Wastewater Cost for House 1.

House 1 - All Utilities and Fees

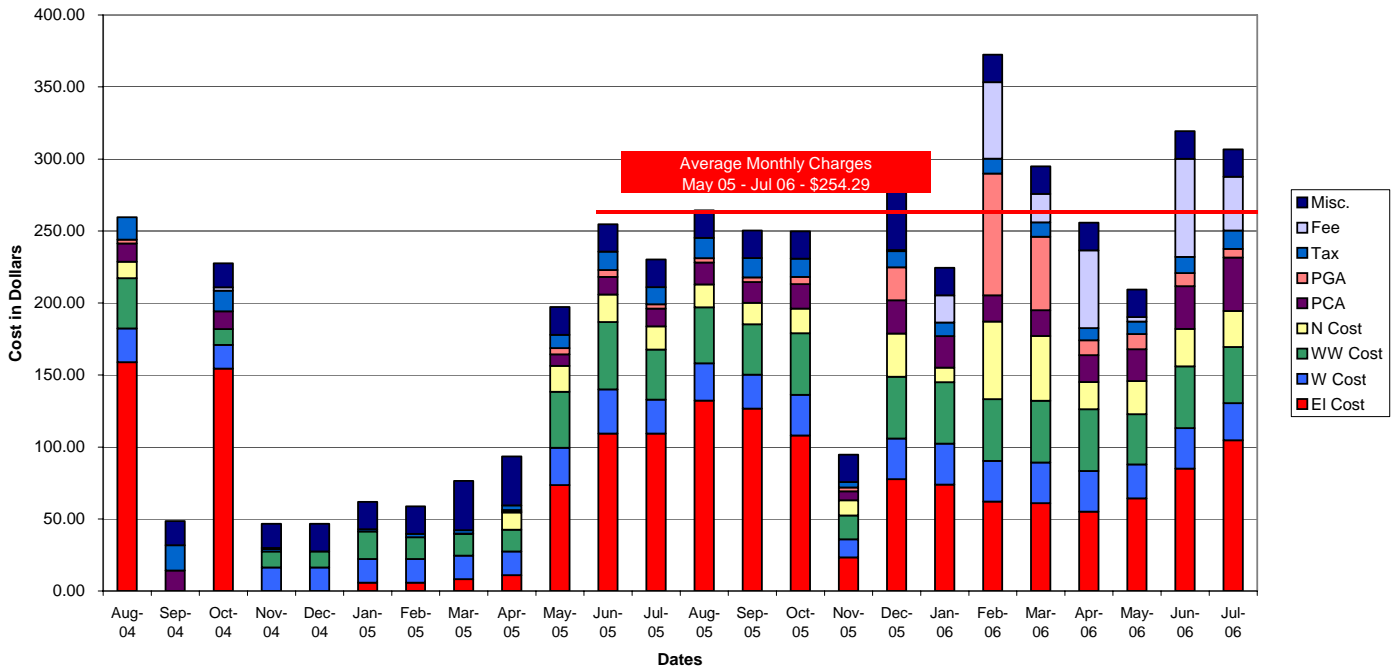


Figure 10. – Summary of All Utilities and Fees for House 1.

House 1 – Home Utility Conservation Survey Recommendations-

1. Service Heating and Air Conditioning System at least once a year and change filters monthly.
2. Use a programmable A/C thermostat with the A/C at 78° or higher and the heat at 70° or lower.
3. Jalousie windows throughout – recommend replacement.
4. Home equipped with inefficient gas hot water heater.
5. Insulate all exposed hot water pipes.
6. Major weatherstripping needed on all exterior doors.
7. Exterior doors also need thresholds.
8. Replace older model window air conditioning unit with a more efficient one.

House 2 -

Year Built: 1956 Square Footage: 1,224 # Bedrooms: 2 # Bathrooms: 1
The information above came from the St. Lucie County Property Appraiser's Office

Data analyzed between August 2004 and July 2006

Utility Services Used: Electric, Water, Wastewater, Natural Gas, Gas Piping and Installation

Average Bill for all services, fees and charges: \$328.21

Highest monthly kWh used: 2,704 Lowest monthly kWh used: 995

Highest monthly water used: 21,000 gallons Lowest monthly water used: 7,000 gallons

Highest monthly natural gas used: 31 ccf Lowest monthly natural gas used: 5 ccf

Consumption and Costs are located in Figures 11 – 15. Detailed Data sheets in Appendix D.

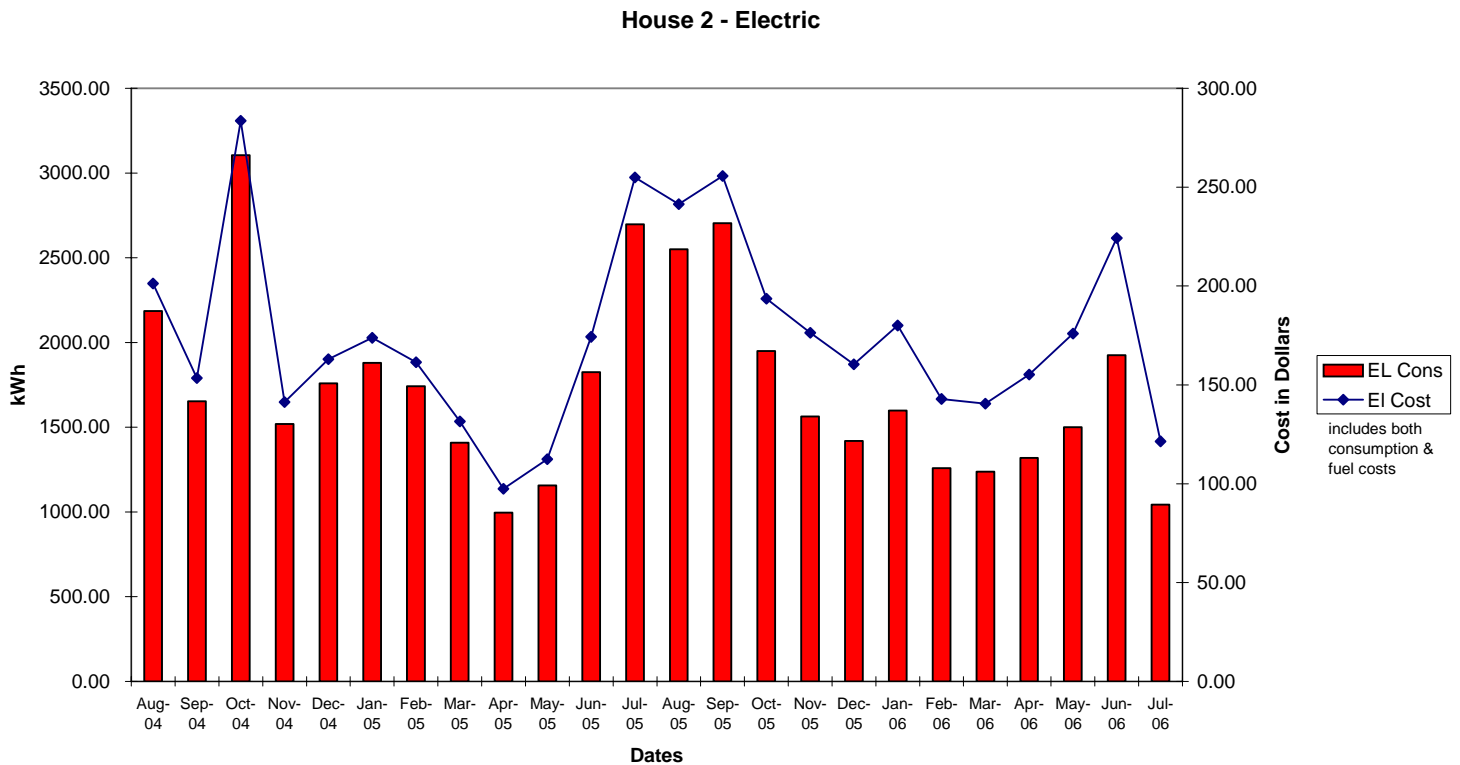


Figure 11. – Electric Consumption and Cost for House 2.

House 2 - Water

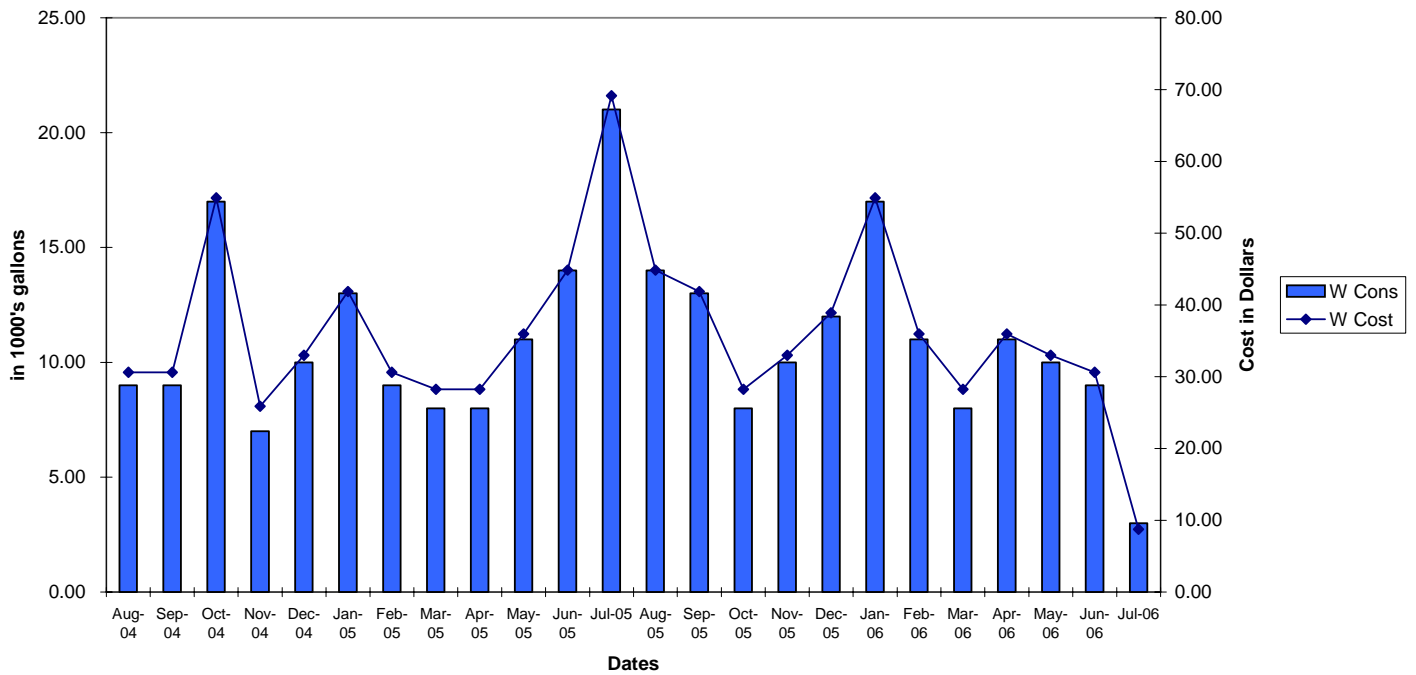


Figure 12. – Water Consumption and Cost for House 2.

Wastewater - House 2

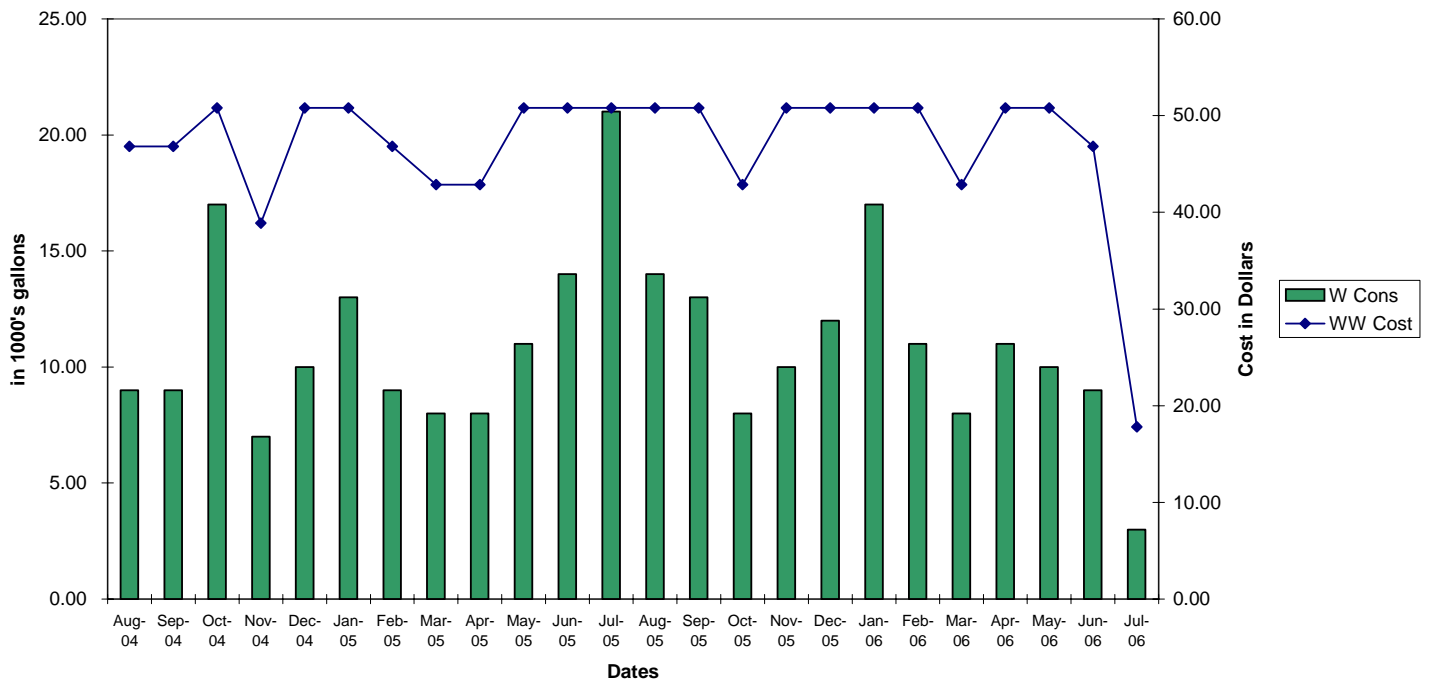


Figure 13. – Water Consumption and Wastewater Cost for House 2.

House 2 - Natural Gas

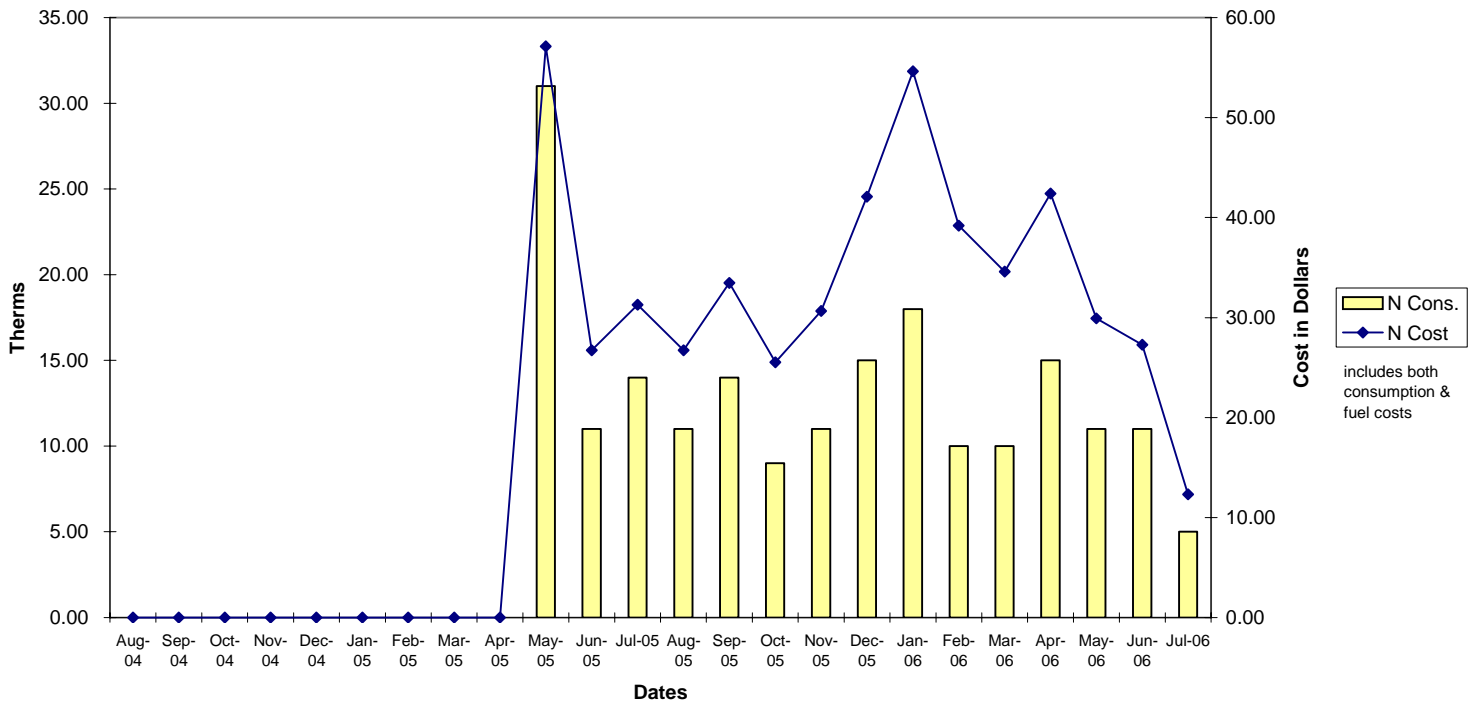


Figure 14. – Natural Gas Consumption and Cost for House 2.

House 2 - All Utilities and Fees

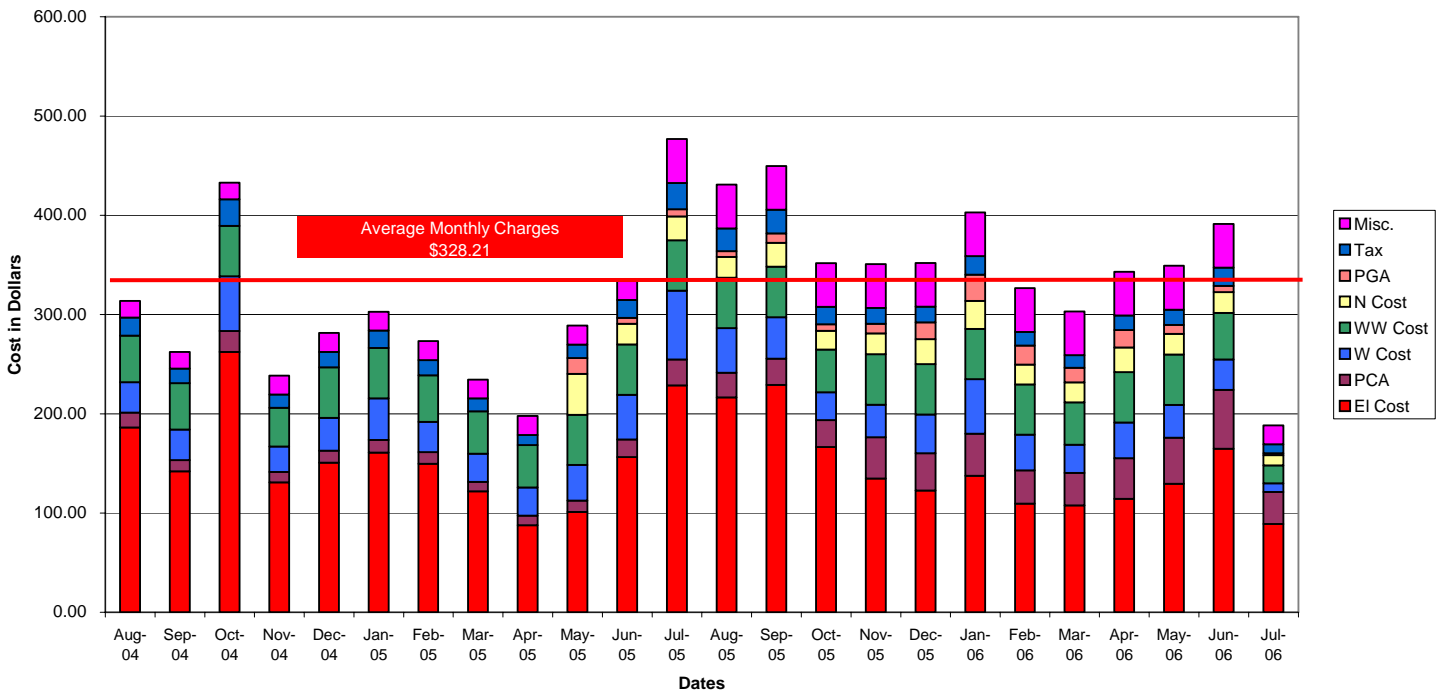


Figure 15. – Summary of All Utilities and Fees for House 2.

House 2 – Home Utility Conservation Survey Recommendations-

1. Service Heating and Air Conditioning System at least once a year and change filters monthly.
2. Use a programmable A/C thermostat with the A/C at 78° or higher and the heat at 70° or lower.
3. Jalousie windows throughout – recommend replacement.
4. Add reflective film to glass areas on east and west sides of home.
5. Insulate all exposed hot water pipes.
6. Major weatherstripping needed on all exterior doors.
7. Exterior doors also need thresholds.
8. Freezer temperature is a minus12°. Adjust to 8°.

House 3 -

Year Built: 1973 Square Footage: 1,157 # Bedrooms: 3 # Bathrooms: 1
The information above came from the St. Lucie County Property Appraiser's Office

Data analyzed between August 2004 and July 2006

Utility Services Used: Electric, Water, Wastewater, Outdoor Lights

Average Bill for all services, fees and charges: \$312.88

Highest monthly kWh used: 2,527

Lowest monthly kWh used: 1,152

Highest monthly water used: 26,000 gallons

Lowest monthly water used: 3,000 gallons

Highest monthly natural gas used: N/A

Lowest monthly natural gas used: N/A

Consumption and Costs are located in Figures 16 – 19. Detailed Data sheets in Appendix D.

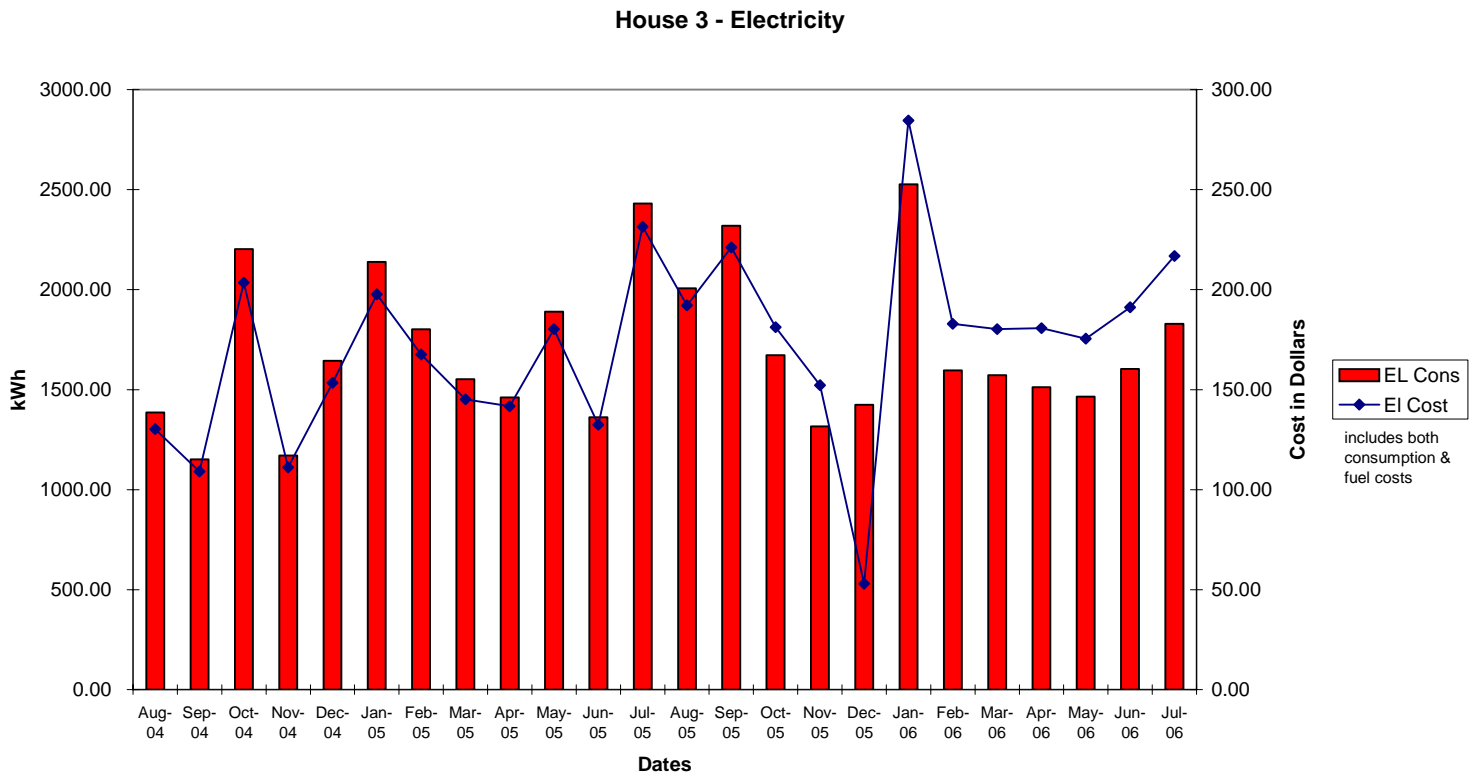


Figure 16. – Electric Consumption and Costs for House 3.

House 3 - Water

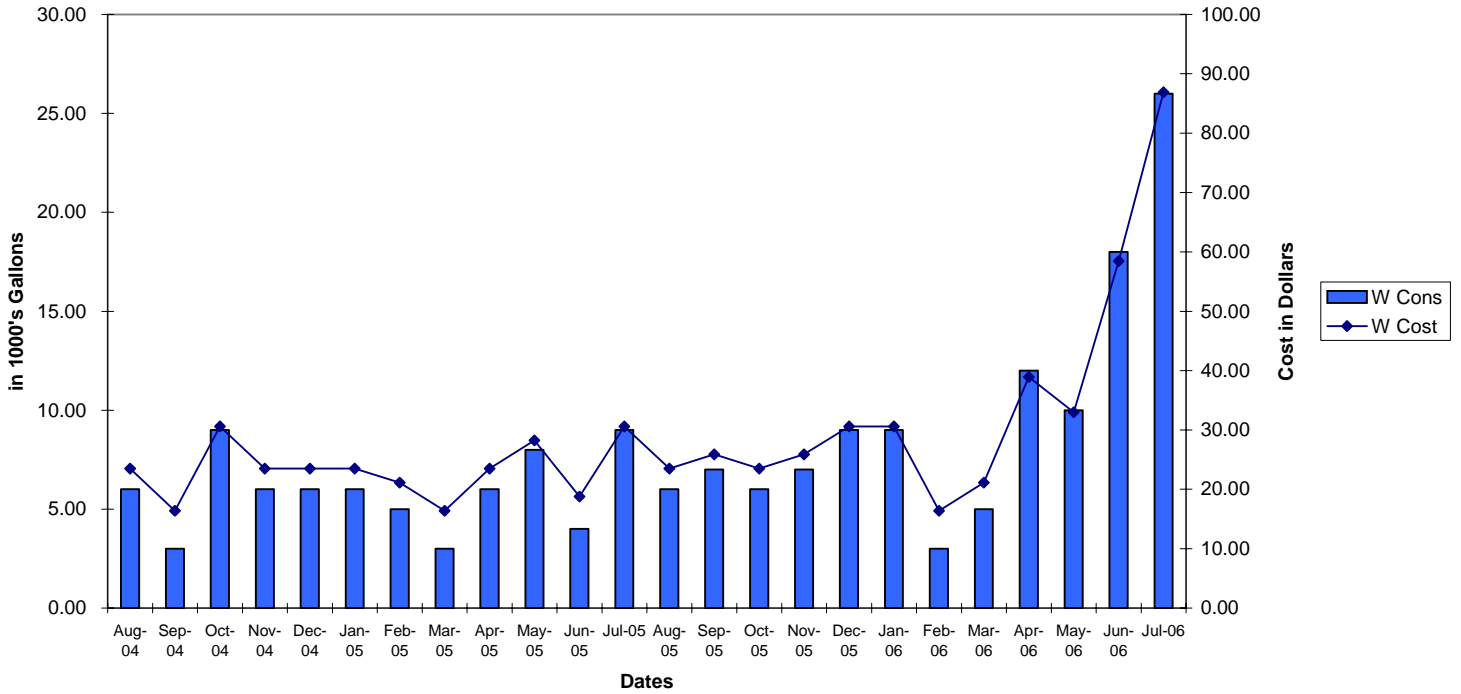


Figure 17. Water Consumption and Costs for House 3.

House 3 - Wastewater

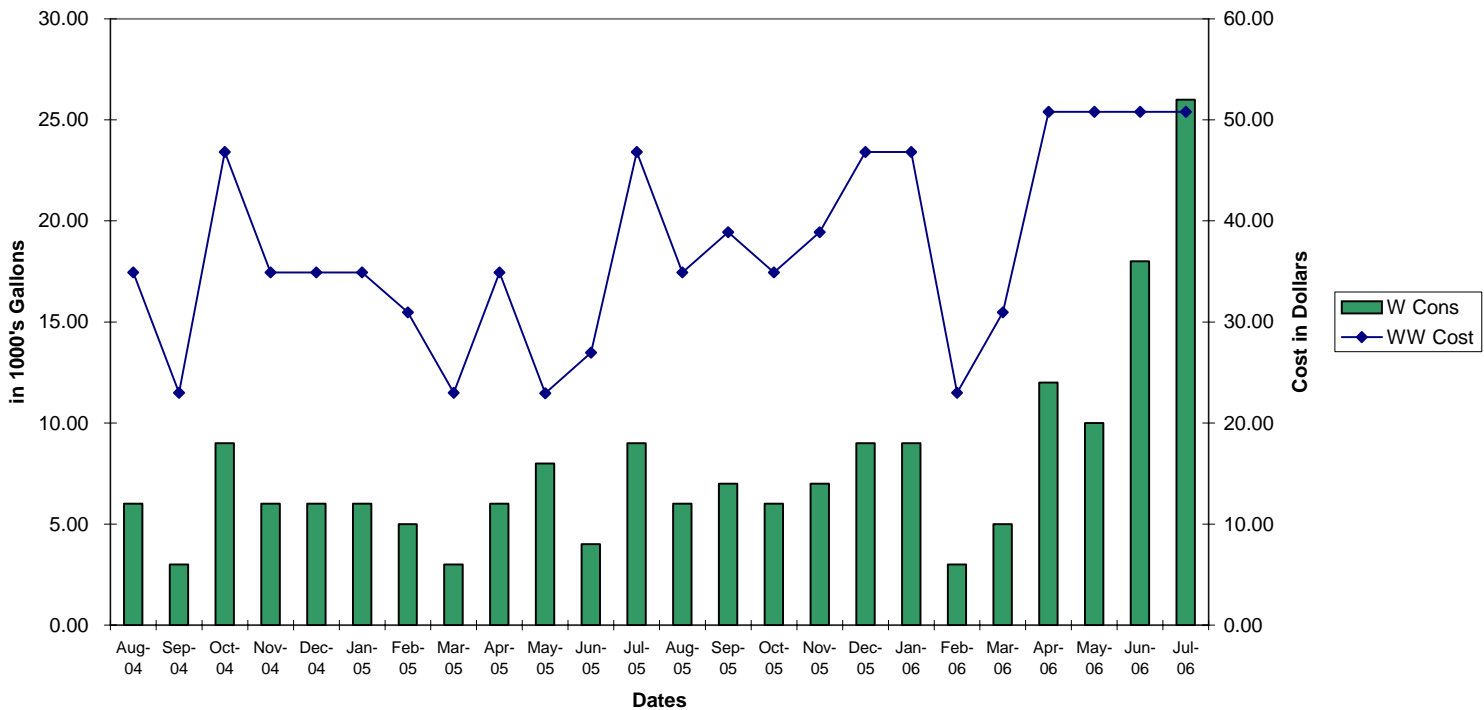


Figure 18. – Water Consumption and Wastewater Costs for House 3.

House 3 - All Utilities & Fees

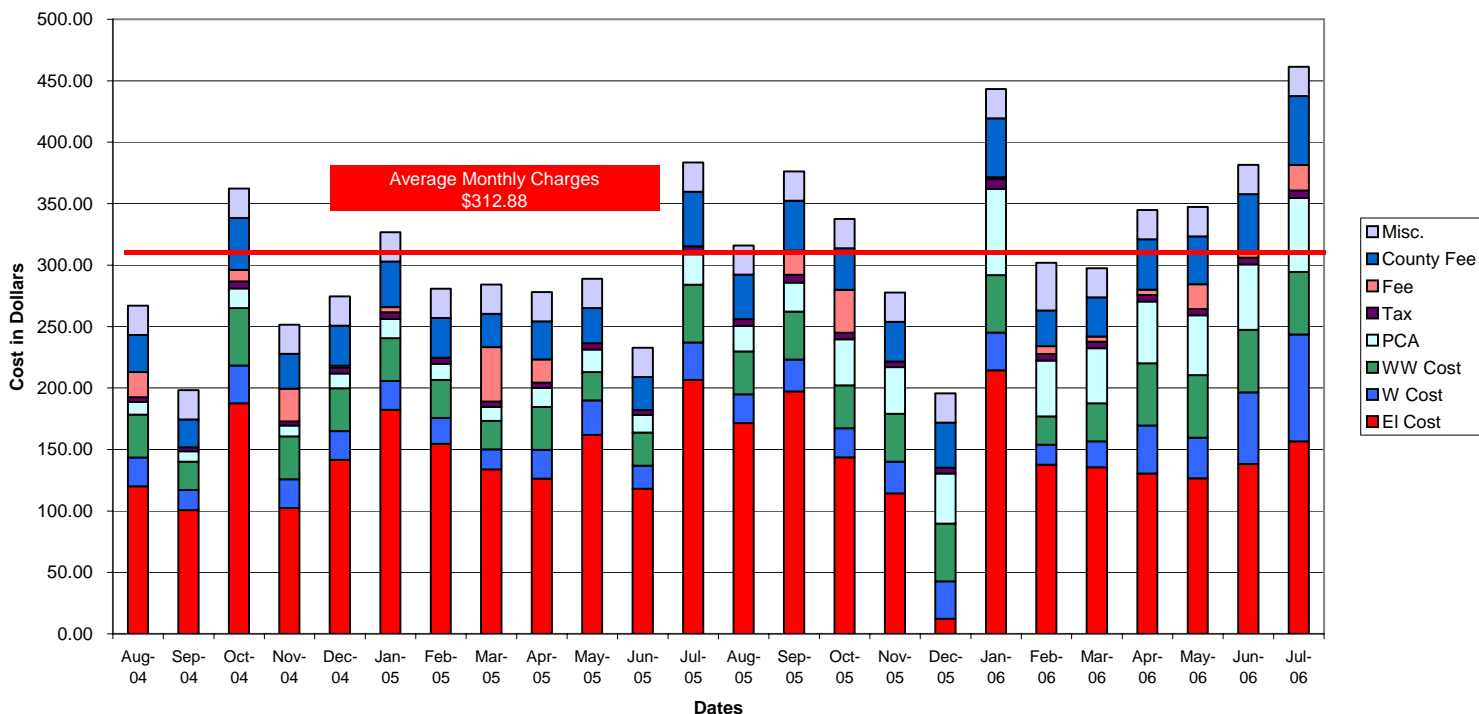


Figure 19. – Summary of All Utilities and Fees for House 3.

House 3 – Home Utility Conservation Survey Recommendations-

1. Service Heating and Air Conditioning System at least once a year and change filters monthly.
2. Use a programmable A/C thermostat with the A/C at 78° or higher and the heat at 70° or lower.
3. Add reflective film to glass areas on east and west sides of home.
4. Insulate all exposed hot water pipes.
5. Major weatherstripping needed on all exterior doors.

House 4 -

Year Built: 1964 Square Footage: 2077 # Bedrooms: 3 # Bathrooms: 2
The information above came from the St. Lucie County Property Appraiser's Office

Data analyzed between August 2004 and July 2006

Utility Services Used: Electric, Water, Wastewater

Average Bill for all services, fees and charges: \$444.08

Highest monthly kWh used: 4,811 Lowest monthly kWh used: 1,569

Highest monthly water used: 47,000 gallons Lowest monthly water used: 11,000 gallons

Highest monthly natural gas used: N/A Lowest monthly natural gas used: N/A

Consumption and Costs are located in Figures 20 – 23. Detailed Data sheets in Appendix D.

House 4 - Electric

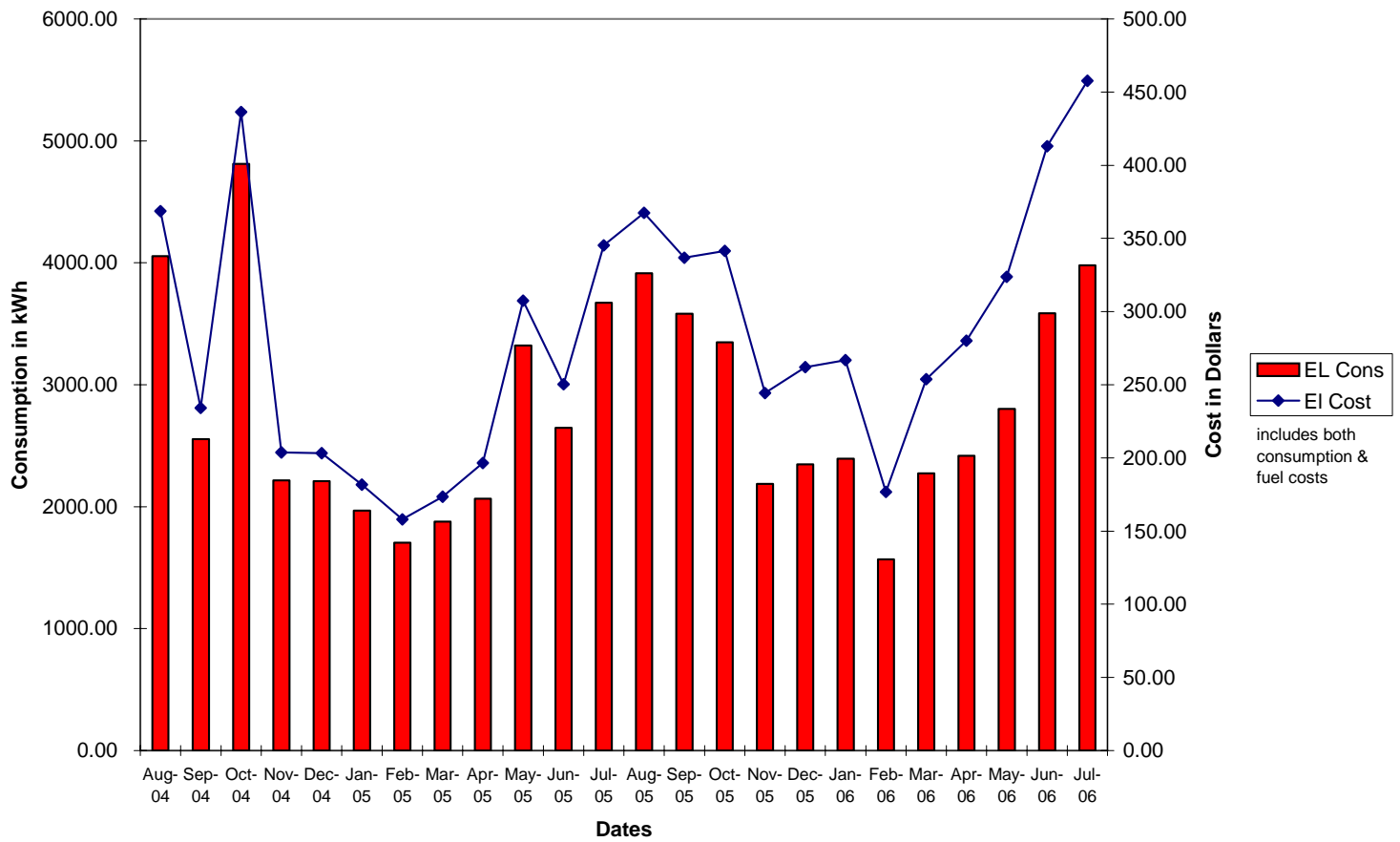
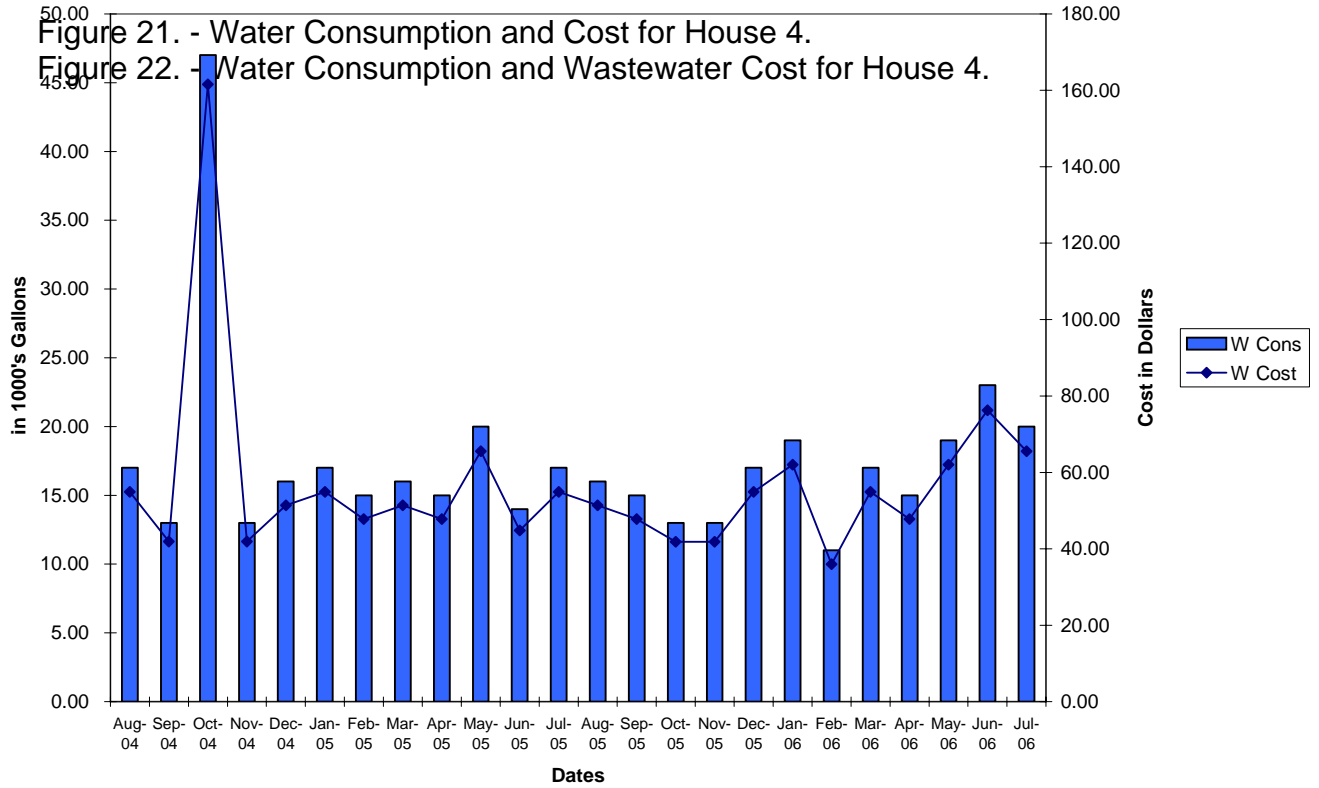
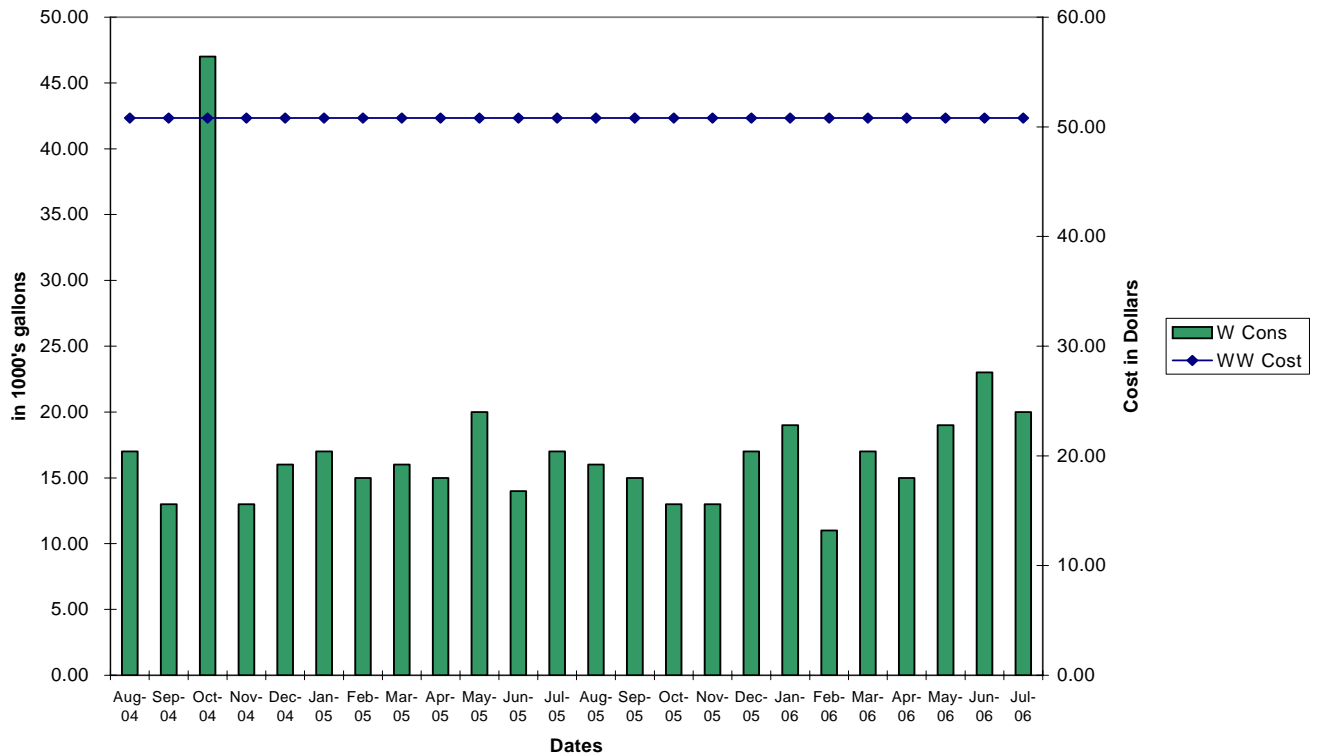


Figure 20. - Electric Consumption and Cost for House 4.

House 4 - Water



House 4 - Wastewater



House 4 - All Utilities and Fees

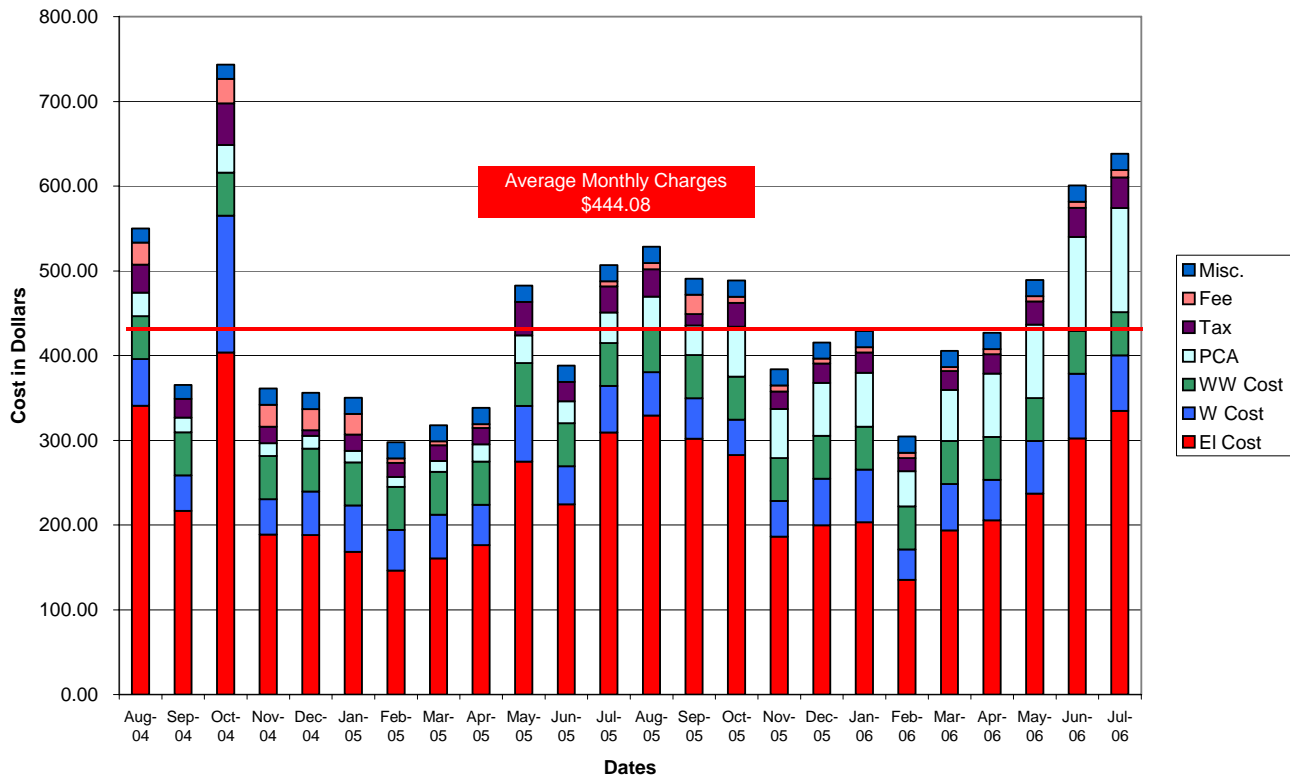


Figure 23. - Summary of All Utilities and Fees for House 4.

House 4 – Home Utility Conservation Survey Recommendations-

1. Service Heating and Air Conditioning System at least once a year and change filters monthly.
2. Use a programmable A/C thermostat with the A/C at 78° or higher and the heat at 70° or lower.
3. Add reflective film to glass areas on east and west sides of home.
4. Insulate all exposed hot water pipes.
5. Major weatherstripping needed on all exterior doors.
6. Jalousie windows throughout – recommend replacement.
7. Uses second refrigerator and freezer.
8. Recommend getting A/C air handler serviced. Area is wet and attic exposed in closet.
9. Possible air conditioning duct damaged. May be leaking cool air into attic space.
10. Freezer in home temp. is minus 5°. Adjust to 8°.

House 5 -

Year Built: 1949 Square Footage: 2,031 # Bedrooms: 2 # Bathrooms: 1
The information above came from the St. Lucie County Property Appraiser's Office

Data analyzed between August 2004 and July 2006

Utility Services Used: Electric, Water, Wastewater, Natural Gas

Average Bill for all services, fees and charges: \$285.63

Highest monthly kWh used: 2,445

Lowest monthly kWh used: 462

Highest monthly water used: 23,000

Lowest monthly water used: 5,000

Highest monthly natural gas used: 15 ccf

Lowest monthly natural gas used: 5 ccf

Consumption and Costs are located in Figures 24 – 28. Detailed Data sheets in Appendix D.

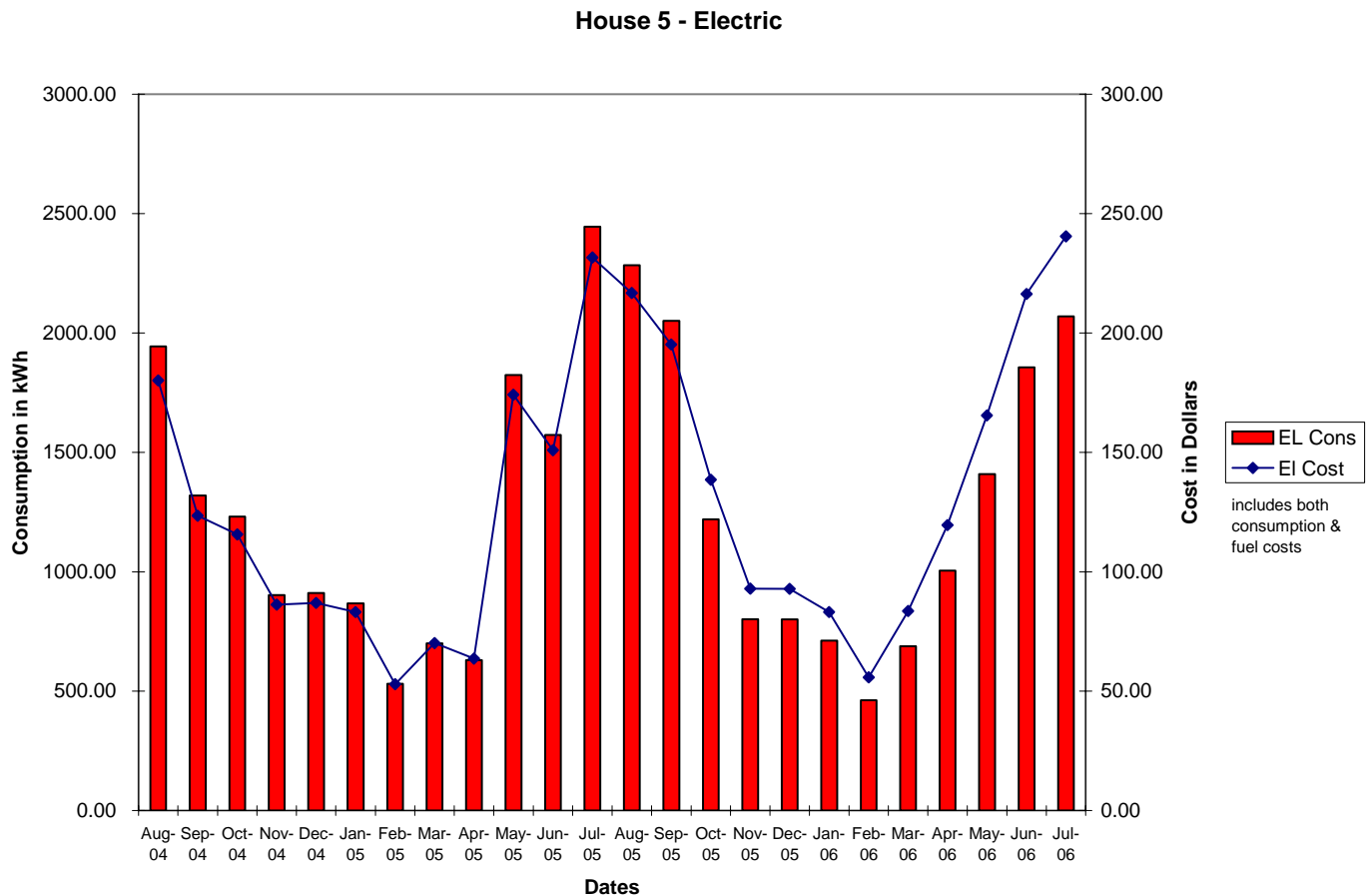


Figure 24. - Electric Consumption and Cost for House 5.

House 5 - Water

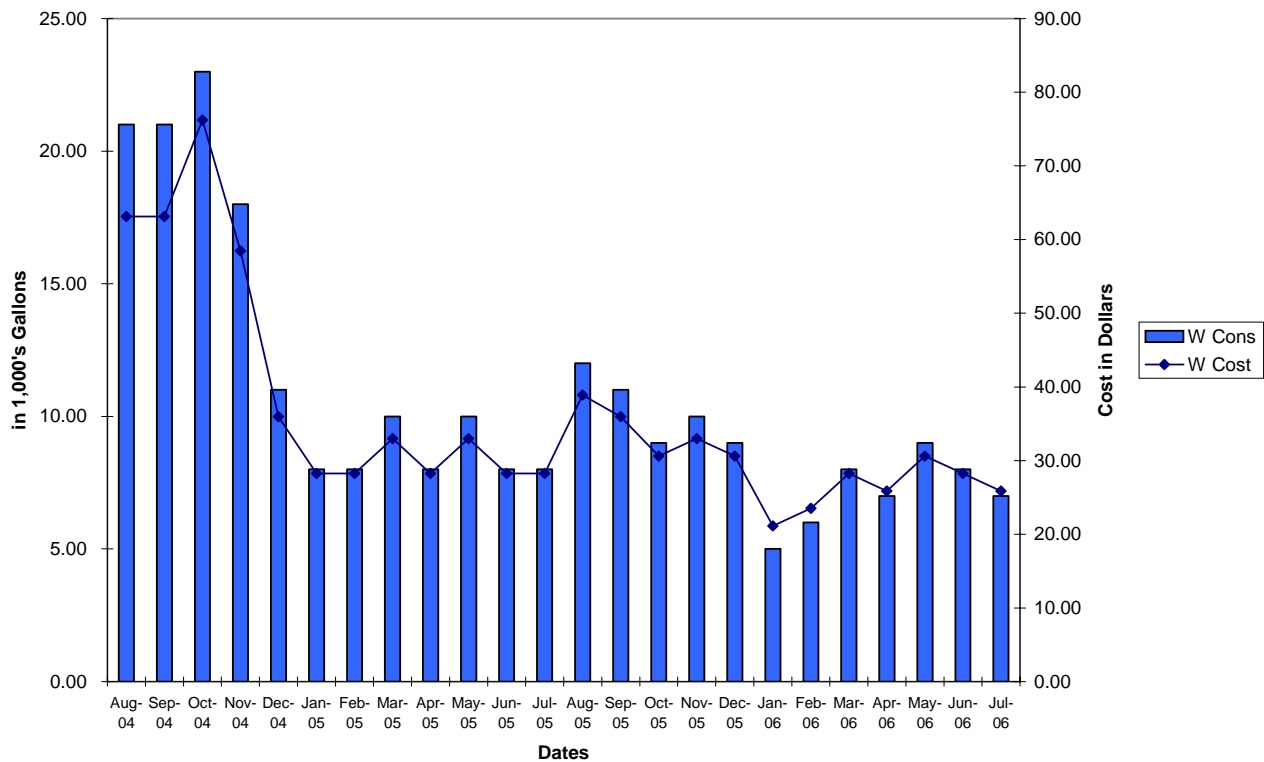


Figure 25. - Water Consumption and Cost for House 5.

House 5 - Wastewater

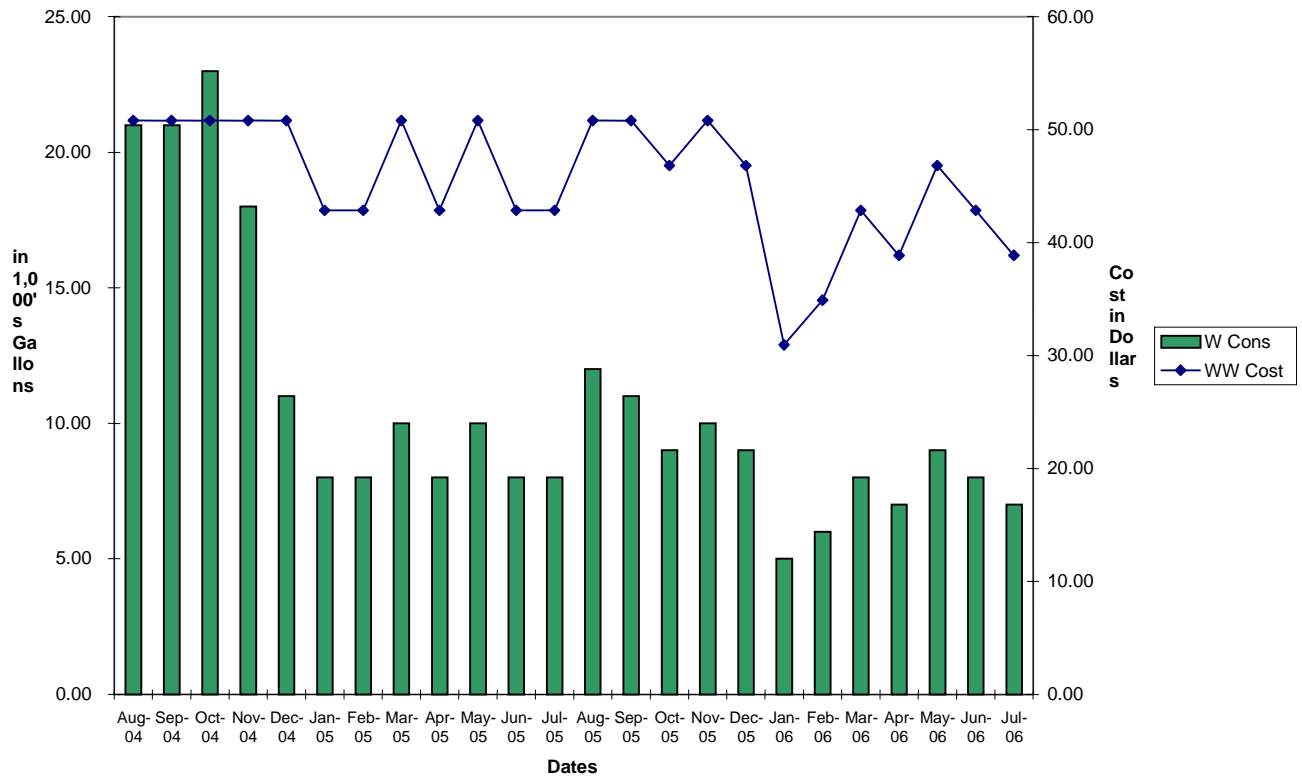


Figure 26. - Water Consumption and Wastewater Cost for House 5.

House 5 - Natural Gas

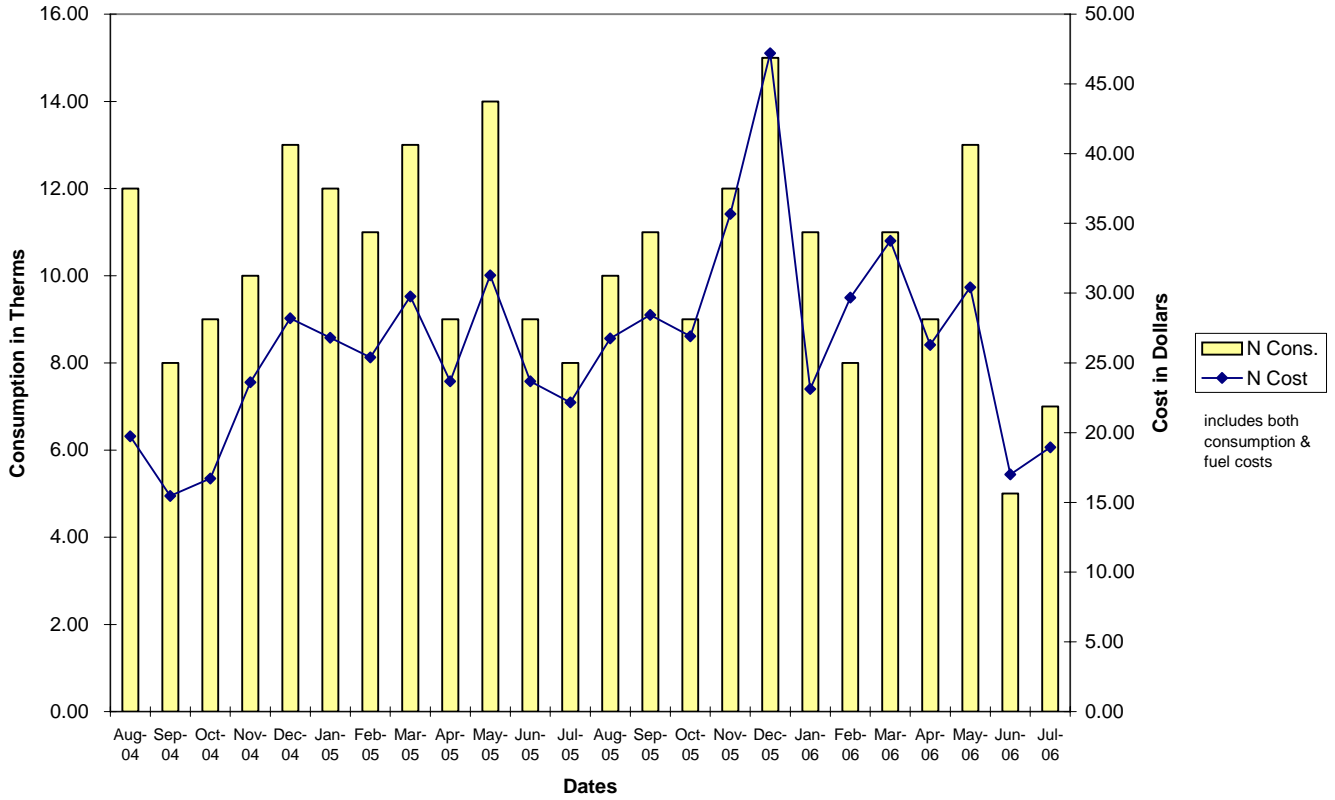


Figure 27. - Natural Gas Consumption and Cost for House 5.

House 5 - All Utilities and Fees

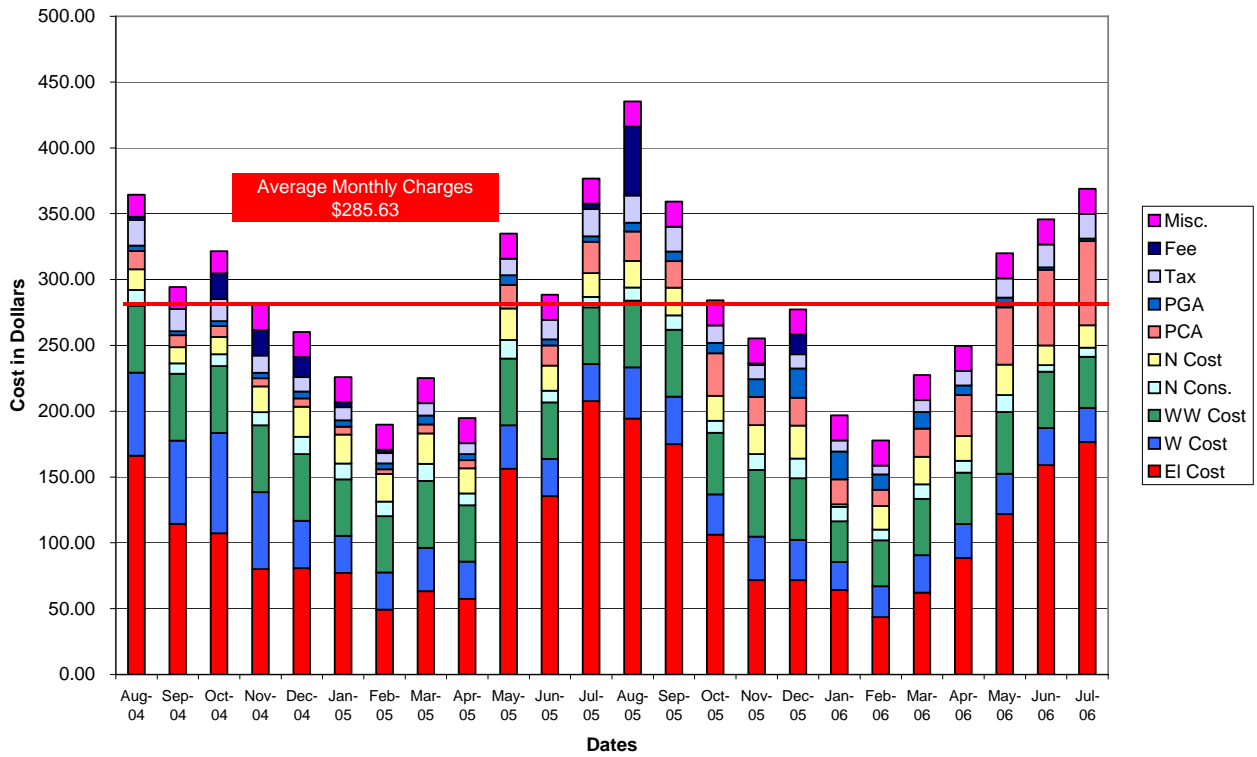


Figure 28. - Summary of All Utilities and Fees.

House 5 – Home Utility Conservation Survey Recommendations-

1. Service Heating and Air Conditioning System at least once a year and change filters monthly.
2. Use a programmable A/C thermostat with the A/C at 78° or higher and the heat at 70° or lower.
3. Add reflective film to glass areas on east and west sides of home.
4. Insulate all exposed hot water pipes.
5. Weatherstripping needed on two rear doors.
6. Has inefficient gas water heater.
7. Recommend adding insulation to attic and to space between walls where rear of home had been added. About a 10" void from floor to ceiling all the way across the house. Very heated area.
8. Refrigerator temp. is 34°. Adjust to 40°.
9. Freezer temp. is minus 8°. Adjust to 8°.

House 6 -

Year Built: 1947 Square Footage: 1,514 # Bedrooms: 2 # Bathrooms: 1
The information above came from the St. Lucie County Property Appraiser's Office

Data analyzed between August 2004 and July 2006

Average Bill for all services, fees and charges: \$236.40

Utility Services Used: Electric, Water, Wastewater

Highest monthly kWh used: 2,636

Lowest monthly kWh used: 614

Highest monthly water used: 11,000

Lowest monthly water used: 3,000

Highest monthly natural gas used: N/A

Lowest monthly natural gas used: N/A

Consumption and Costs are located in Figures 29 – 32. Detailed Data sheets in Appendix D.

House 6 - Electric

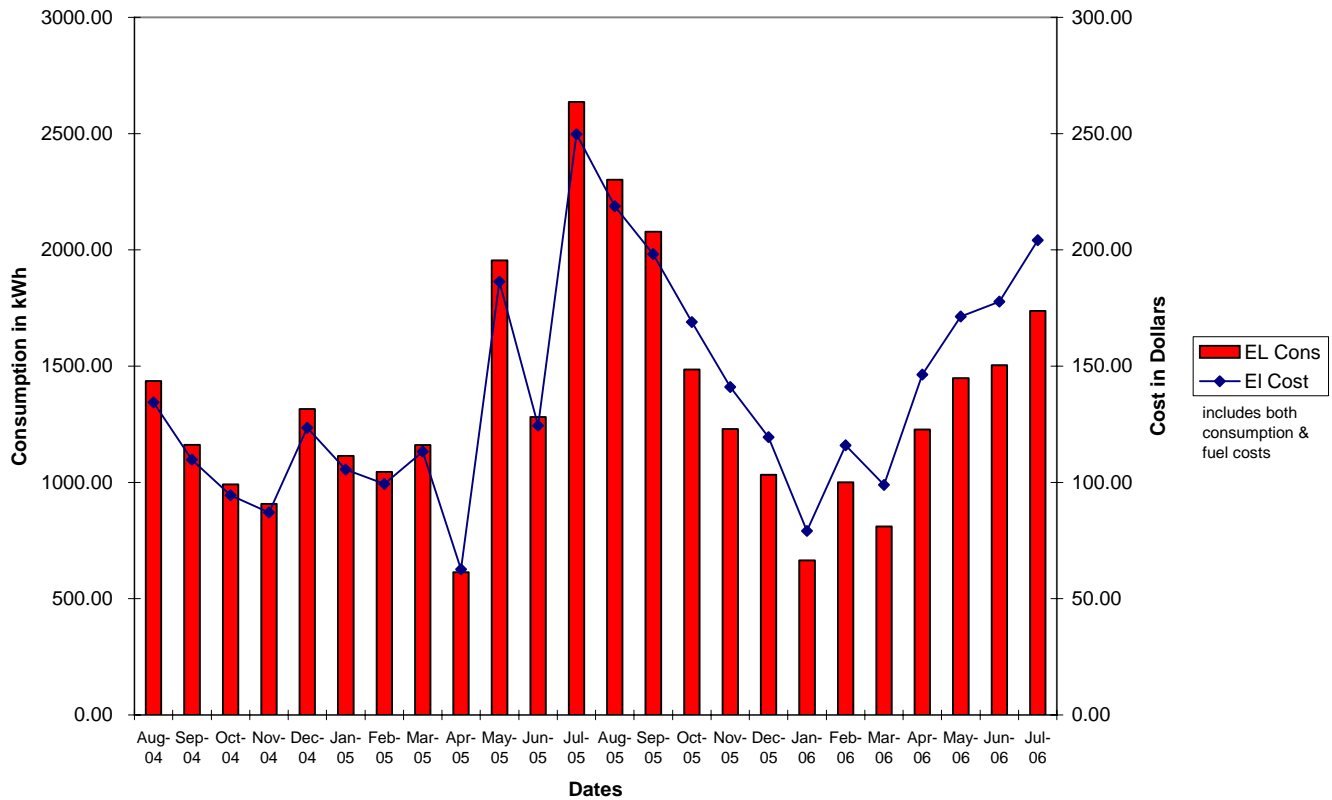


Figure 29. - Electric Consumption and Cost for House 6.

House 6 - Water

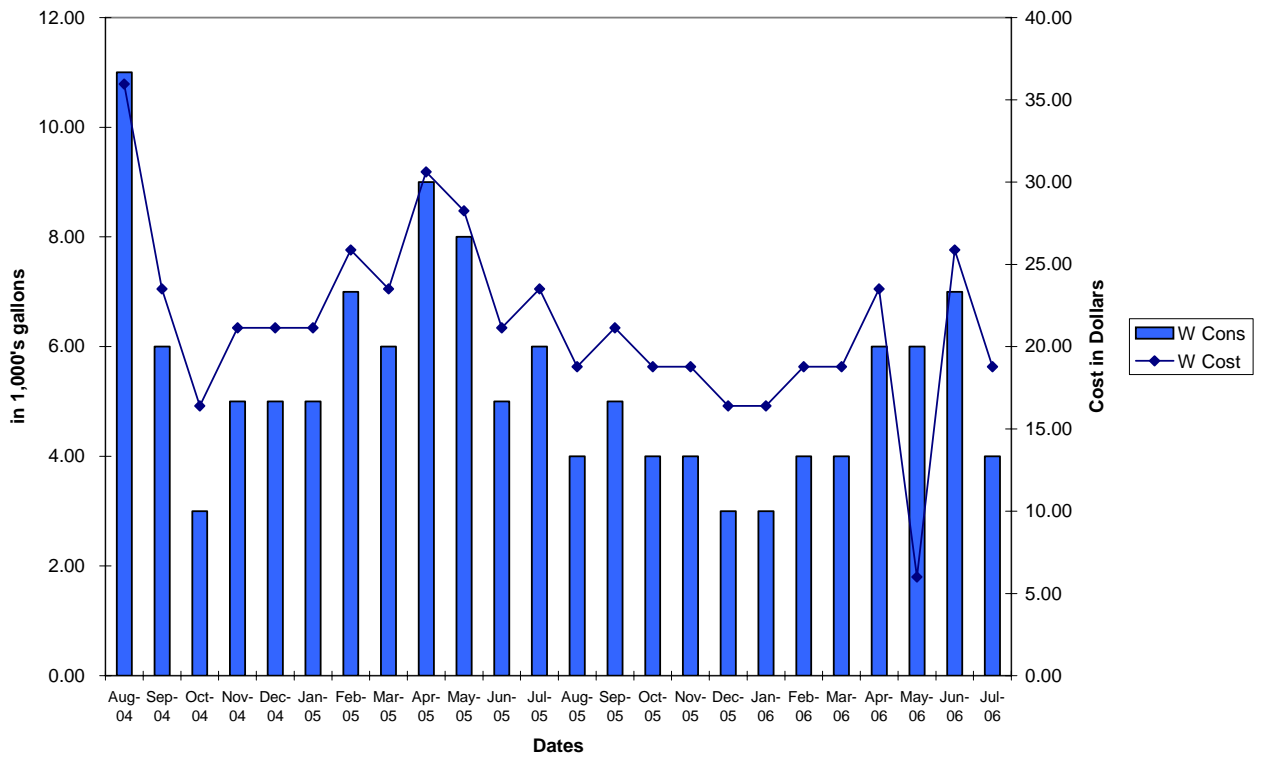


Figure 30. - Water Consumption and Cost for House 6.

House 6 - Wastewater

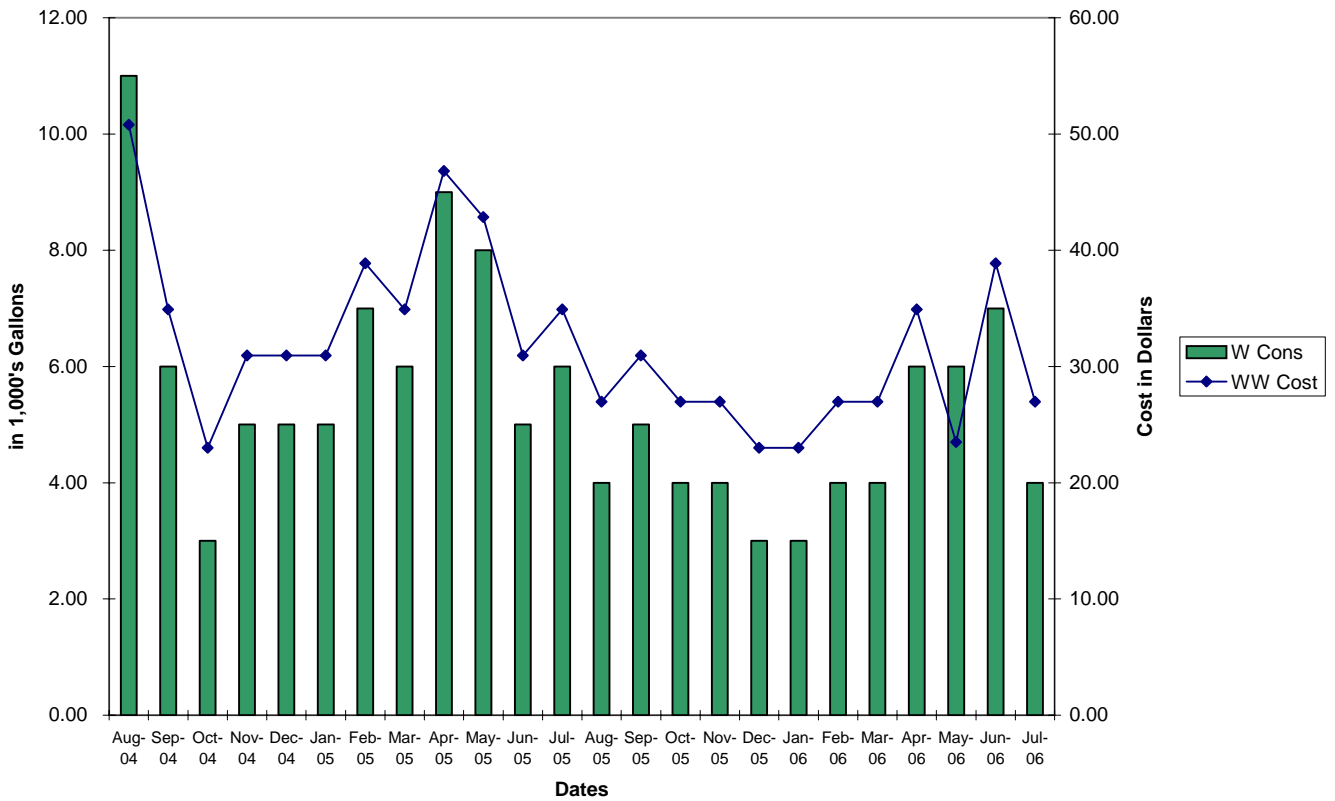


Figure 31. - Water Consumption and Wastewater Cost for House 6.

This report was produced in September 2006. Please call FPUA customer service for updated rates and fees at 772-466-1600, ext. 3072. 36

House 6 - All Utilities & Fees

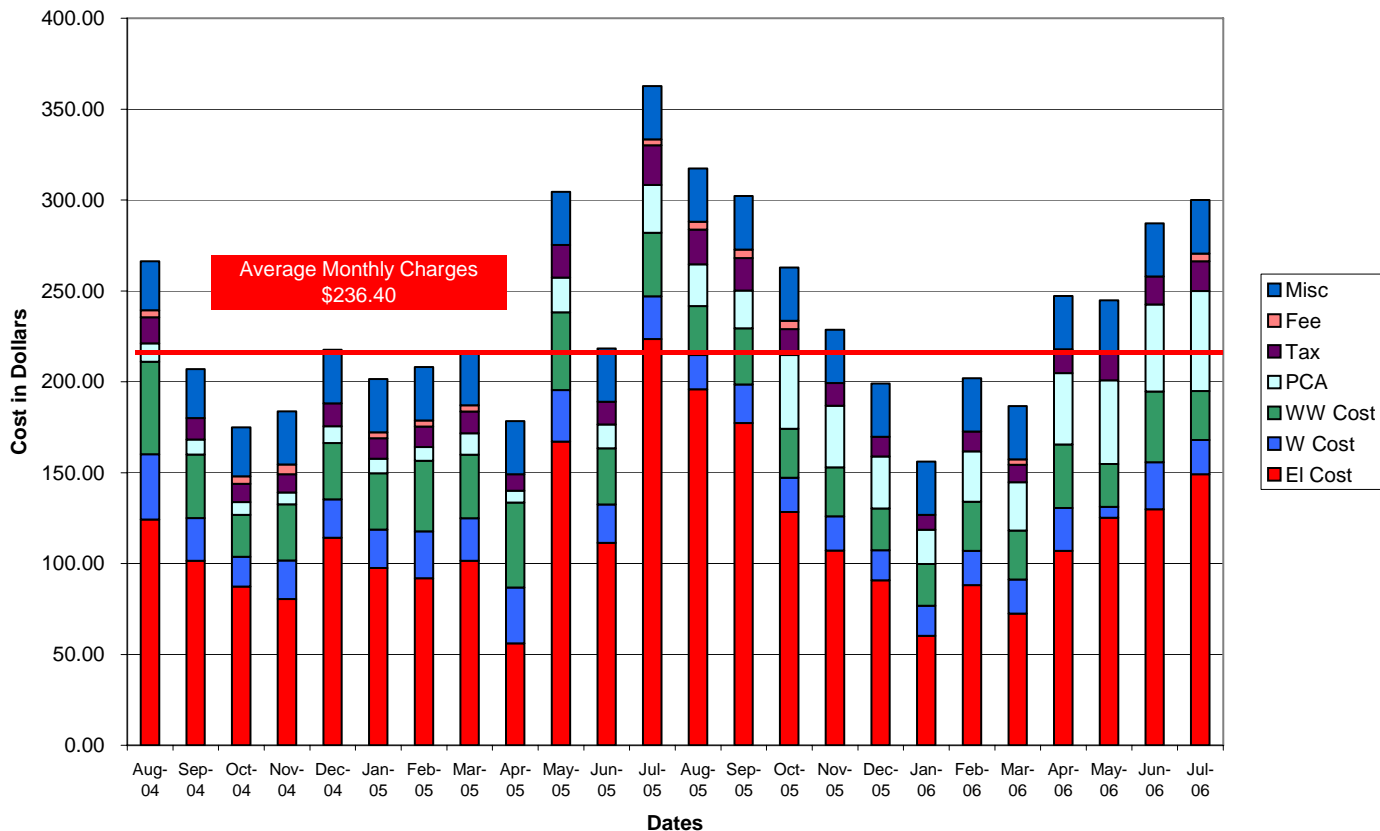


Figure 32. - Summary of All Utilities and Fees for House 6.

House 6 – Home Utility Conservation Survey Recommendations-

1. Service Heating and Air Conditioning System at least once a year and change filters monthly.
2. Use a programmable A/C thermostat with the A/C at 78° or higher and the heat at 70° or lower.
3. Home uses second refrigerator and 2nd stove.
4. Insulate all exposed hot water pipes.
5. Weatherstripping needed on all exterior doors.
6. Cover hole in wall under bathroom sink.
7. Exterior door and casing on southwest corner of home may need replacing.
8. Replace missing outlet and light cover plates.
9. Freezer temp. is minus 20°. Adjust to 8°.

House 7 -

Year Built: 1971 Square Footage: 1,157 # Bedrooms: 3 # Bathrooms: 1
The information above came from the St. Lucie County Property Appraiser's Office

Data analyzed between August 2004 and July 2006

Utility Services Used: Electric, Water, Wastewater, Natural Gas, Outside City, Payment Arrangements, numerous penalties, late fees and disconnections,

Average Bill for all services, fees and charges: \$435.39

Highest monthly kWh used: 4,530

Lowest monthly kWh used: 904

Highest monthly water used: 27,000 gallons

Lowest monthly water used: 3,000 gallons

Highest monthly natural gas used: 21 ccf

Lowest monthly natural gas used: 7 ccf

Consumption and Costs are located in Figures 33 – 37. Detailed Data sheets in Appendix D.

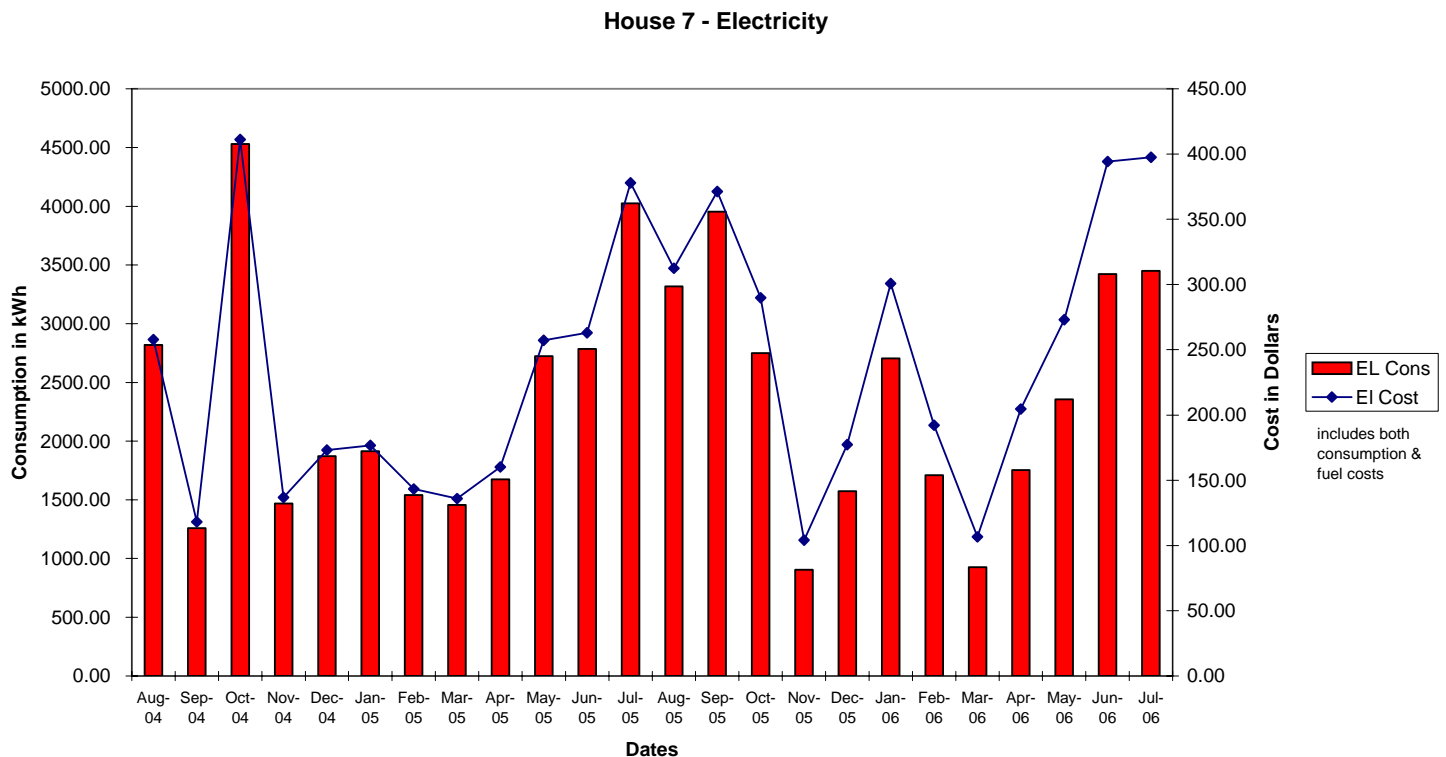


Figure 33. – Electric Consumption and Cost for House 7.

House 7 - Water

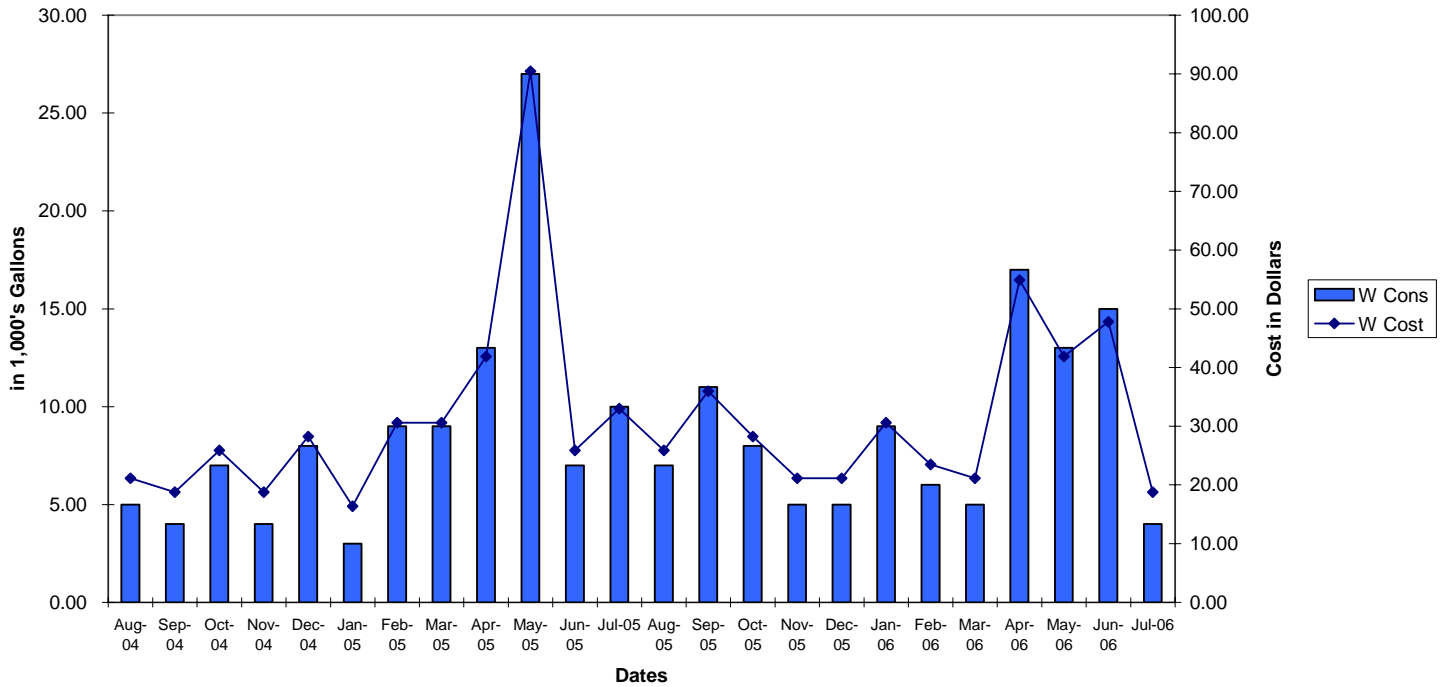


Figure 34. – Water Consumption and Cost for House 7.

House 7 - Wastewater

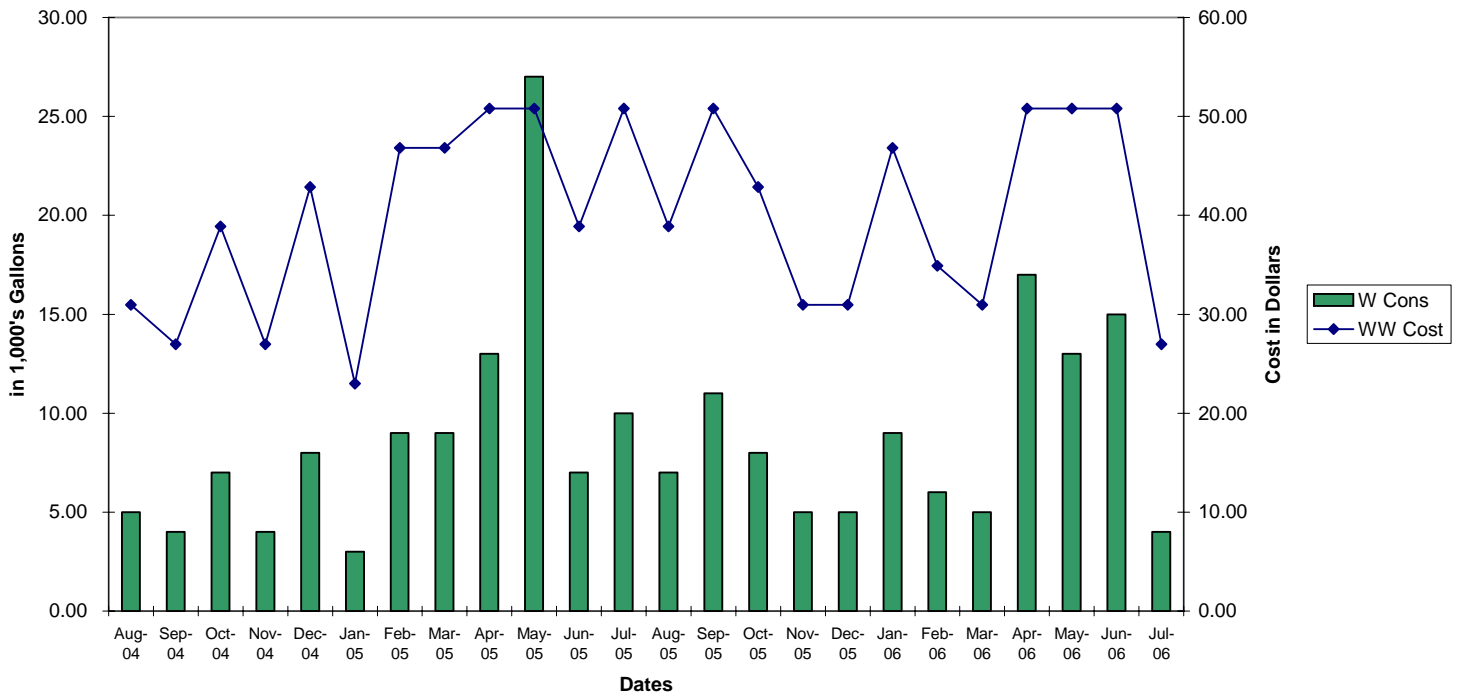


Figure 35. – Waster Consumption and Wastewater Cost for House 7.

House 7 - Natural Gas

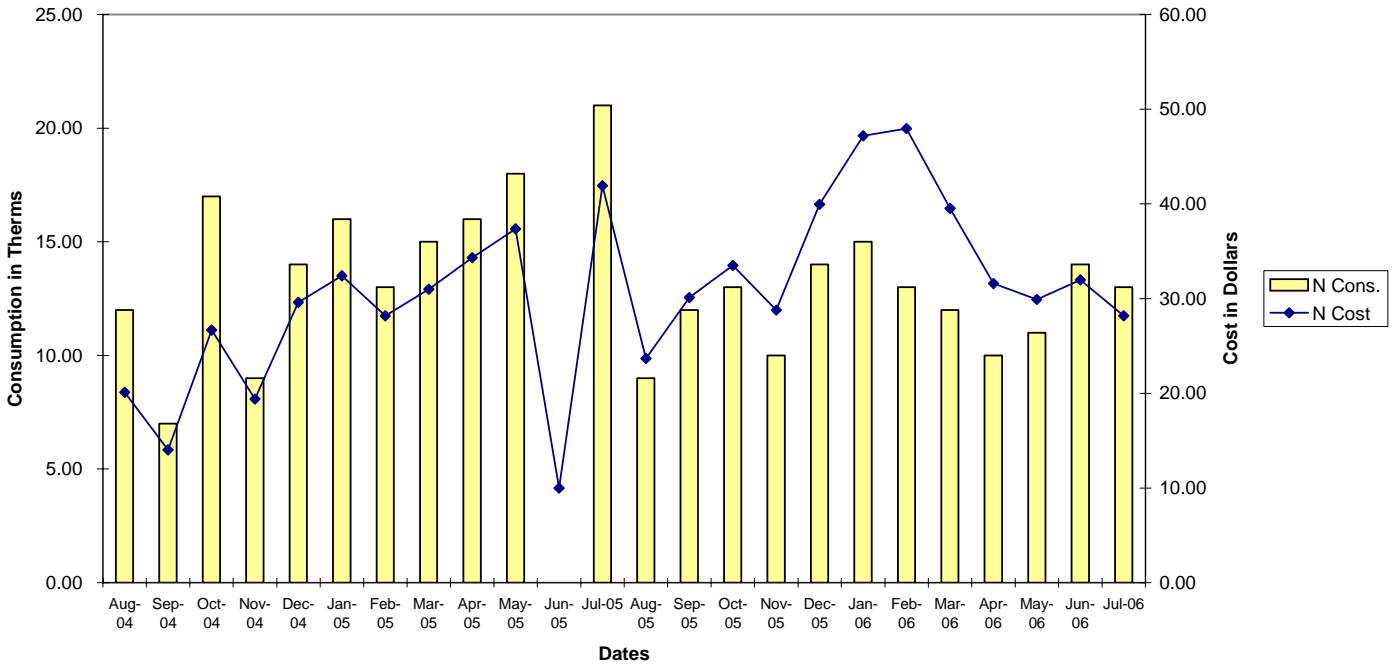


Figure 36. – Natural Gas Consumption and Cost for House 7.

House 7 - All Utilities and Fees

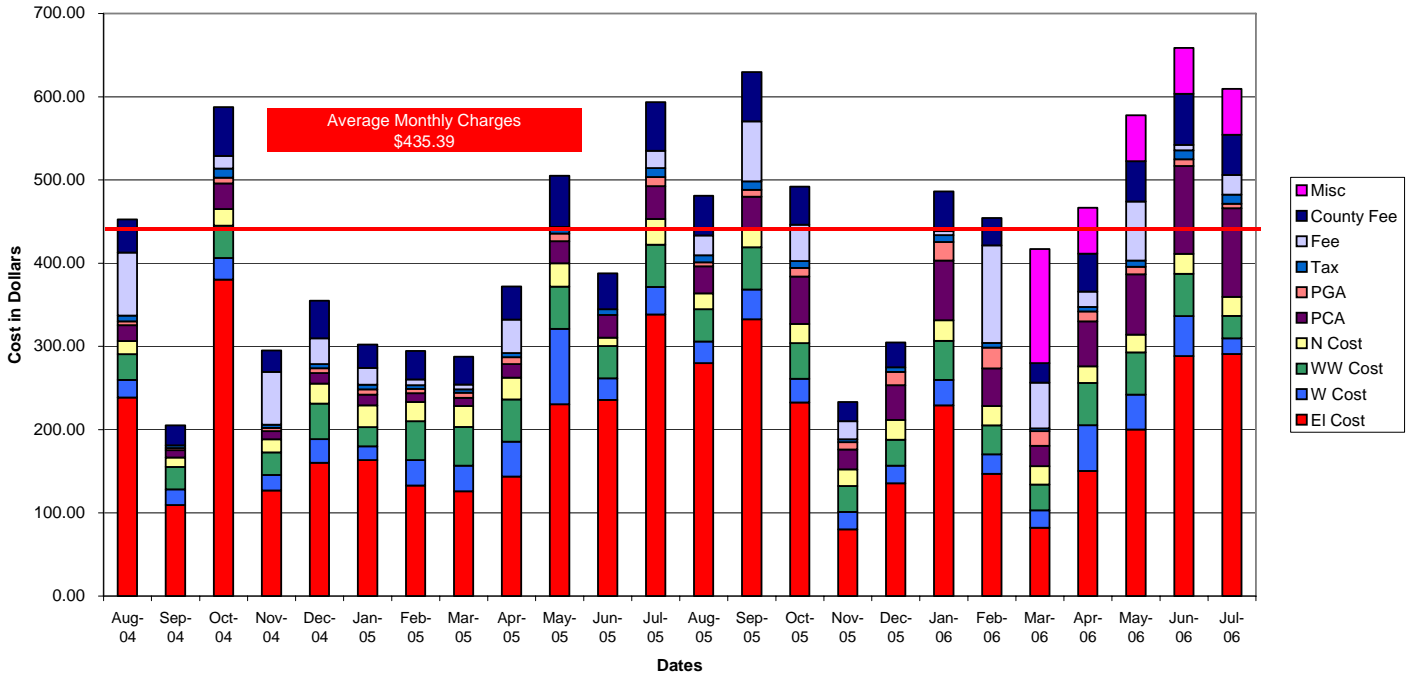


Figure 37. – Summary of All Utilities and Fees for House 7.

House 7 – Home Utility Conservation Survey Recommendations-

1. Service Heating and Air Conditioning System at least once a year and change filters monthly.
2. Use a programmable A/C thermostat with the A/C at 78° or higher and the heat at 70° or lower.
3. Keep outside A/C unit clear from grass and debris.
4. Evaporator coils on A/C condensing unit in poor condition.
5. Add reflective film to glass areas on east and west sides of home.
6. Insulate all exposed hot water pipes.
7. Major weatherstripping needed on all exterior doors.
8. Jalousie windows throughout – recommend replacement.
9. Home has inefficient gas hot water heater.
10. Cover holes in walls under sinks where pipes protrude.
11. Unable to get into attic space to check A/C duct work.
12. Freezer in home temp. is at 0°. Adjust to 8°.

House 8 -

Year Built: 1931 Square Footage: 3,038 # Bedrooms: 3 # Bathrooms: 2
The information above came from the St. Lucie County Property Appraiser's Office

Data analyzed between August 2004 and July 2006

Average Bill for all services, fees and charges: \$364.01

Utility Services Used: Electric, Water, Wastewater, Natural Gas, Project Care

Highest monthly kWh used: 3,981

Lowest monthly kWh used: 1,233

Highest monthly water used: 25,000 gallons

Lowest monthly water used: 3,000 gallons

Highest monthly natural gas used: 27 ccf

Lowest monthly natural gas used: 10 ccf

Consumption and Costs are located in Figures 38 – 42. Detailed Data sheets in Appendix D.

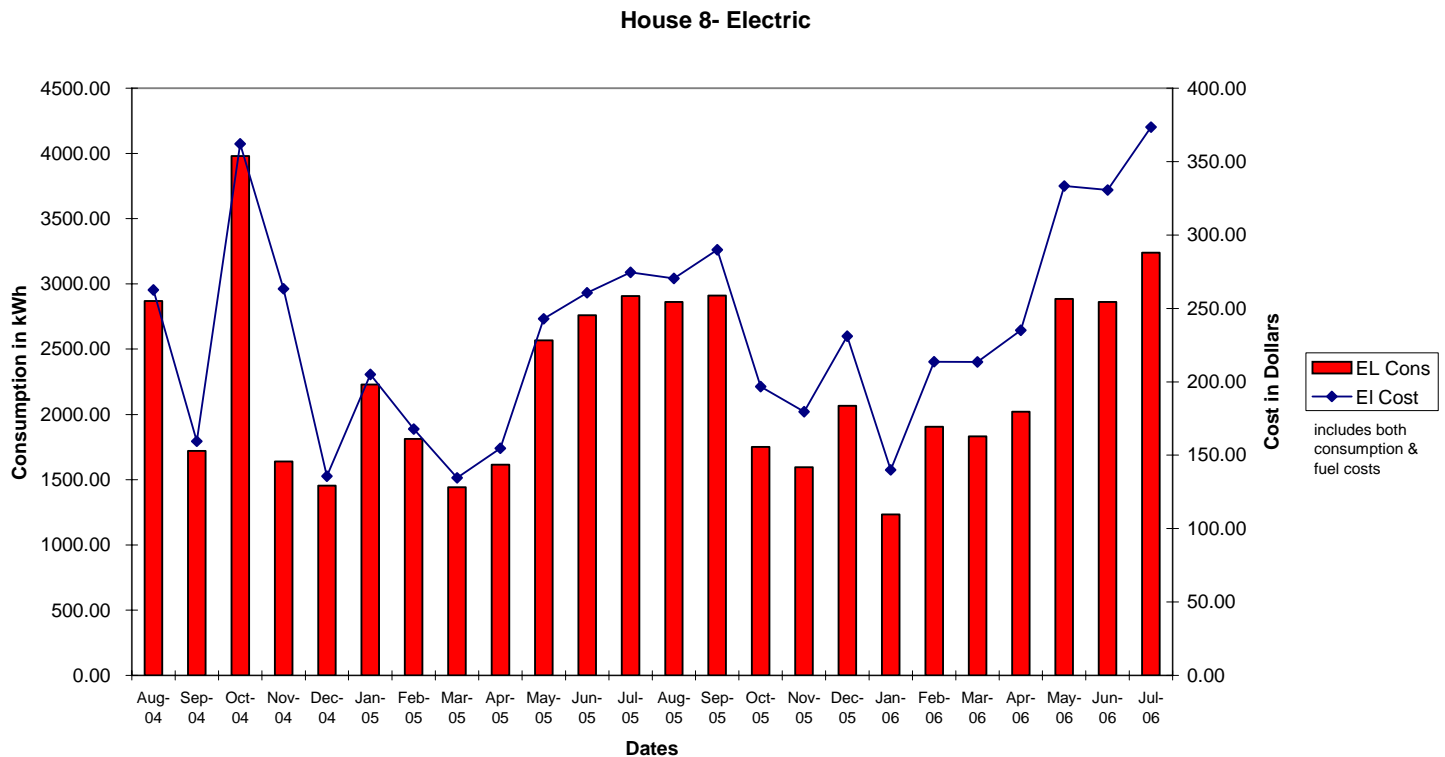


Figure 38. – Electric Consumption and Cost for House 8.

House 8 - Water

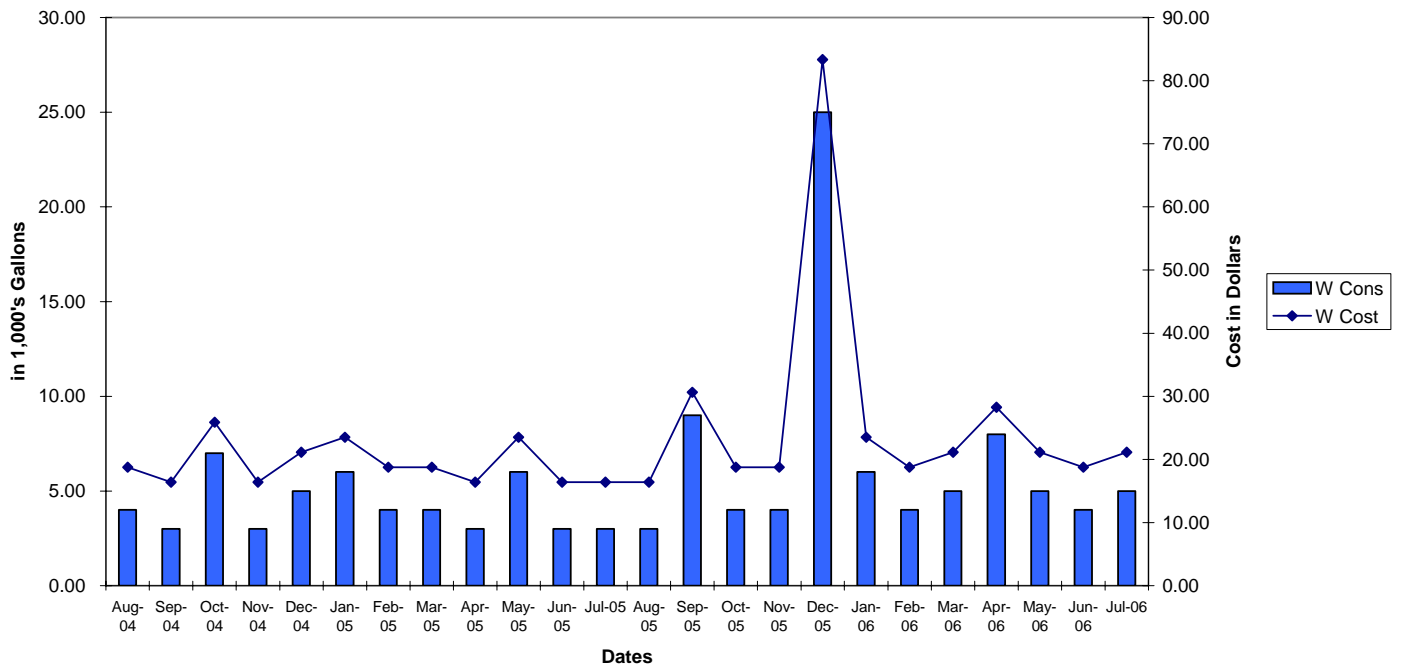


Figure 39. – Water Consumption and Cost for House 8.

House 8 - Wastewater

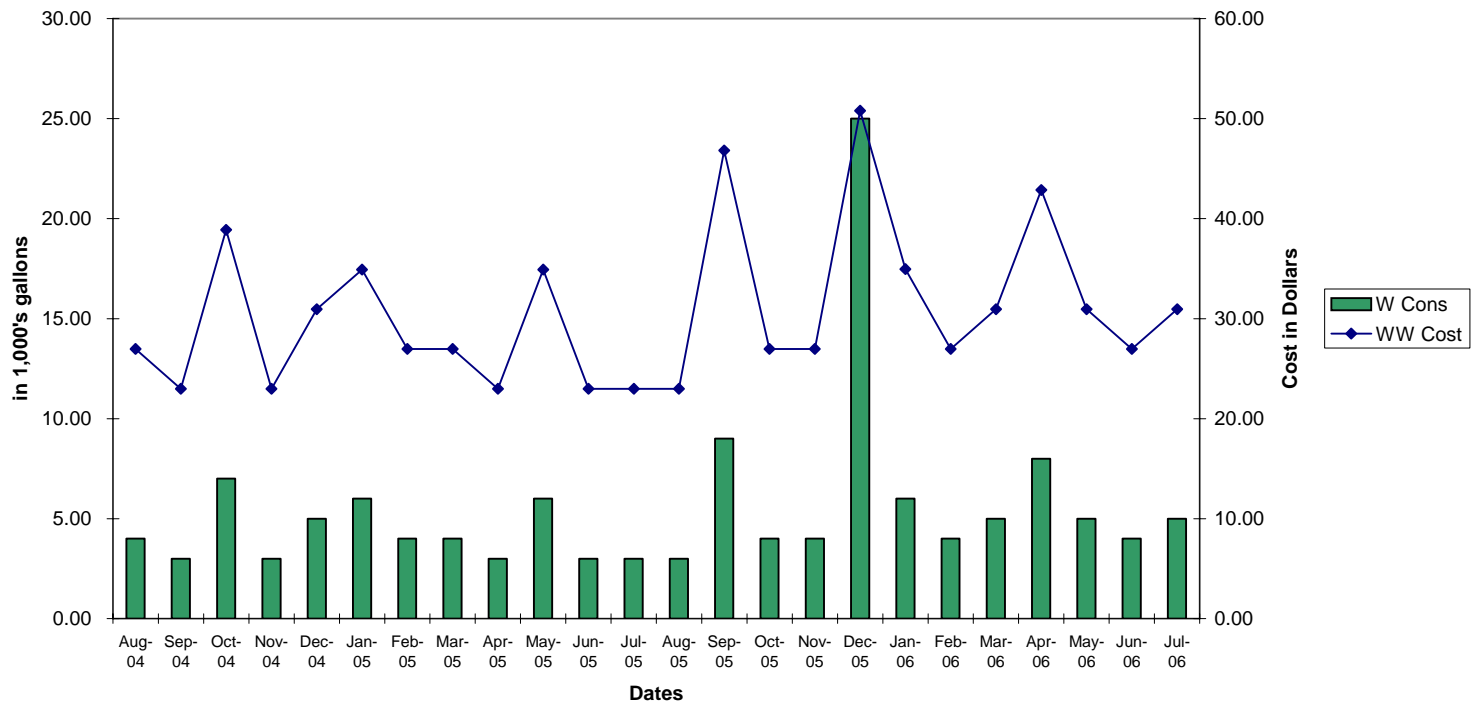


Figure 40. – Water Consumption and Wastewater Cost For House 8.

House 8 - Natural Gas

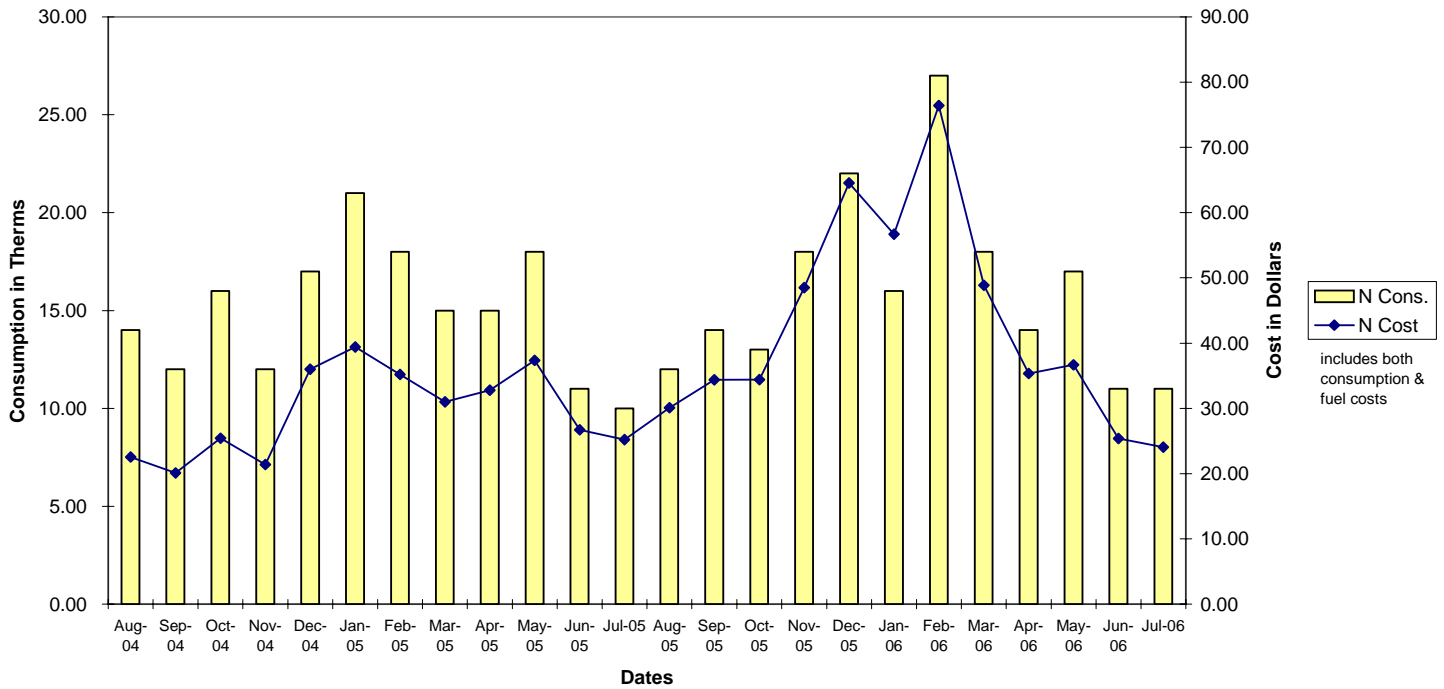


Figure 41. – Natural Gas Consumption and Cost for House 8.

House 8 - All Utilities and Fees

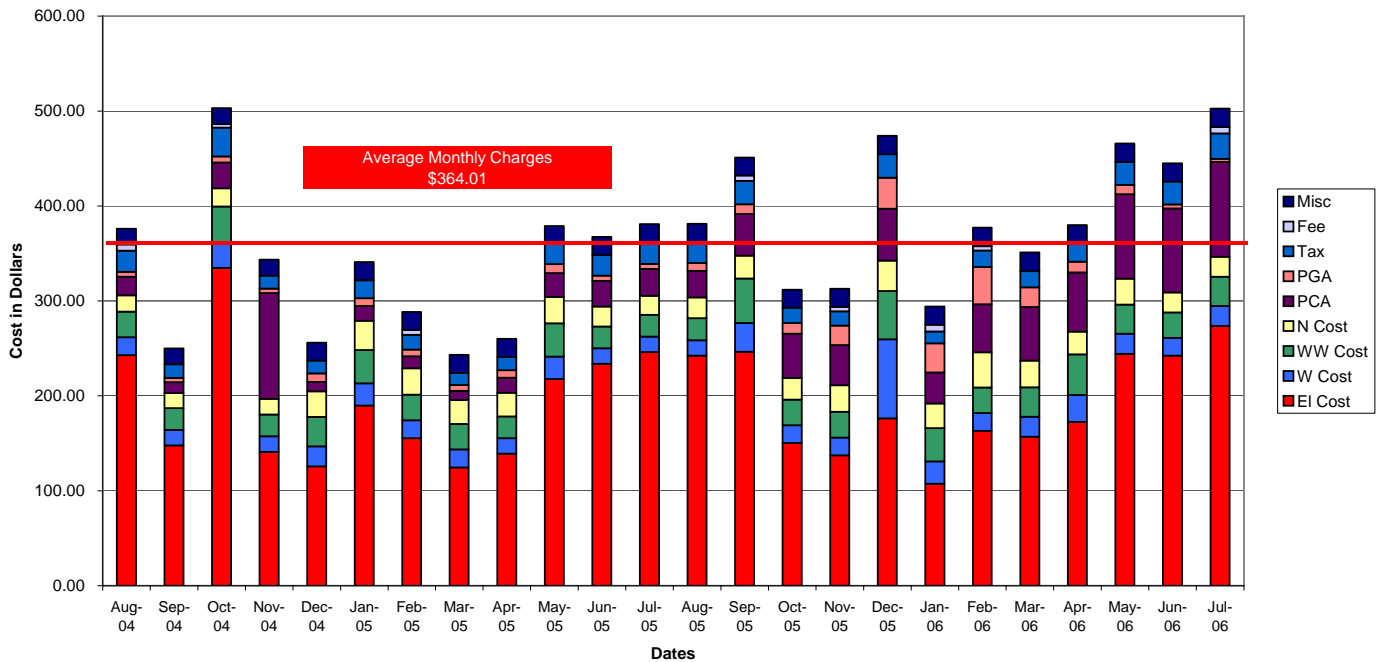


Figure 42. – Summary of All Utilities and Fees for House 8.

House 8 – Home Utility Conservation Survey Recommendations-

1. Service Heating and Air Conditioning System at least once a year and change filters monthly.
2. Use a programmable A/C thermostat with the A/C at 78° or higher and the heat at 70° or lower.
3. Add reflective film to glass areas on east and west sides of home.
4. Insulate all exposed hot water pipes.
5. Weatherstripping needed on garage and front doors, also wood frame windows.
6. Jalousie windows throughout – recommend replacement.
7. Home has inefficient gas hot water heater.
8. Home equipped with 3hp well pump.
9. Customer uses 2nd refrigerator.
10. Refrigerator in home temp. is at 35°. Adjust to 40°.

House 9 -

Year Built: 1960 Square Footage: 2,999 # Bedrooms: 4 # Bathrooms: 2
The information above came from the St. Lucie County Property Appraiser's Office

Data analyzed between August 2004 and July 2006

Utility Services Used: Electric, Water, Project Care

Average Bill for all services, fees and charges: \$232.71

Highest monthly kWh used: 3,576

Lowest monthly kWh used: 240

Highest monthly water used: 13,000 gallons

Lowest monthly water used: 1,000 gallons

Highest monthly natural gas used:

N/A

Lowest monthly natural gas used: N/A

Consumption and Costs are located in Figures 43 – 45. Detailed Data sheets in Appendix D.

House 9 - Electric

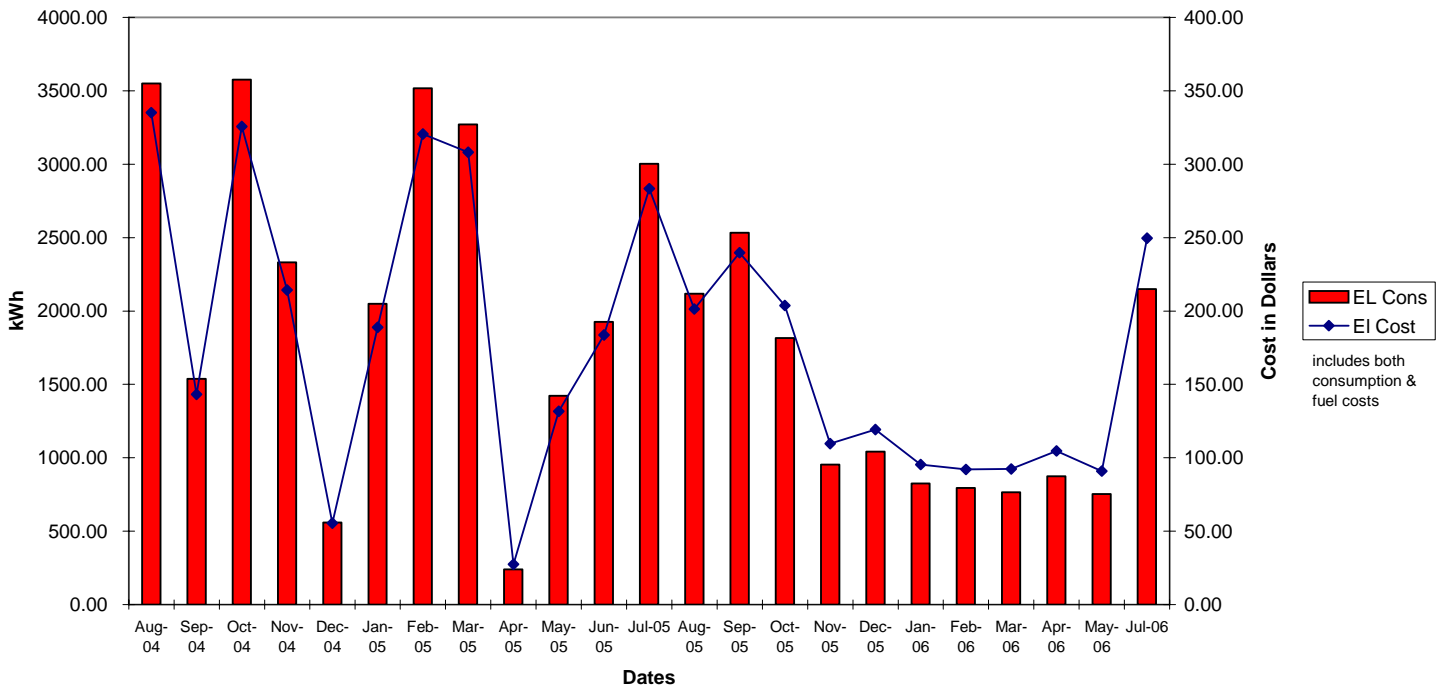


Figure 43. – Electric Consumption and Cost for House 9.

House 9 Water

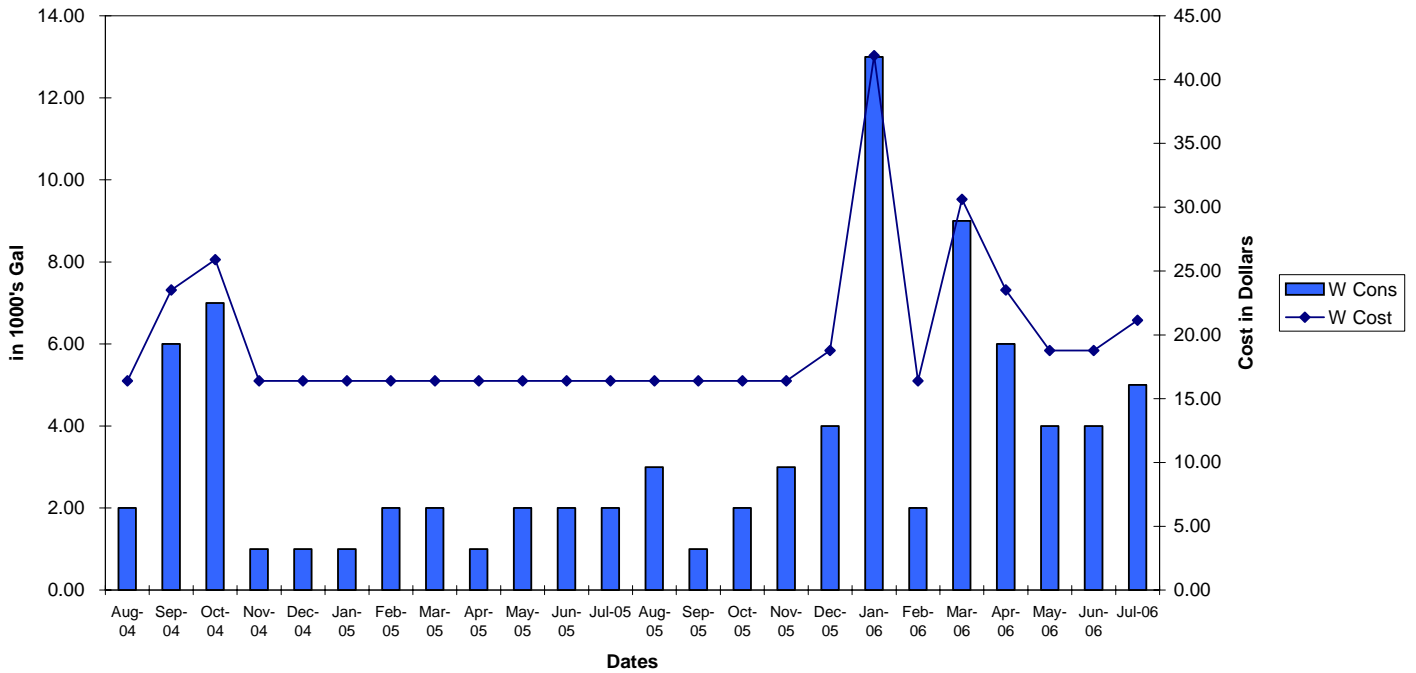


Figure 44. – Water Consumption and Cost for House 9.

House 9 - Monthly Cost of Utilities and Other Charges

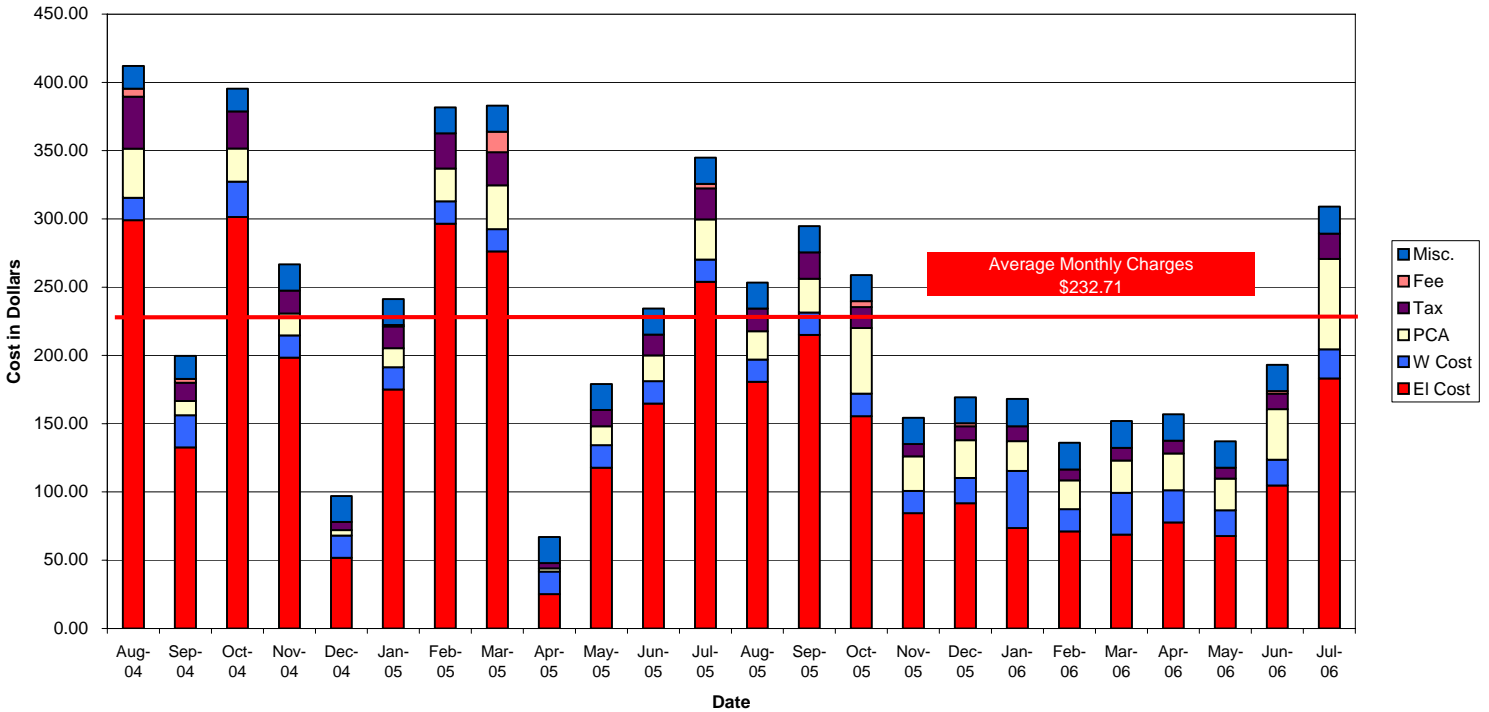


Figure 45. – Summary of All Utilities and Fees for House 9.

House 9 – Home Utility Conservation Survey Recommendations-

The Utility Surveyor attempted to contact the resident on numerous occasions by telephone but the line was disconnected. He stopped by the residence several times, but was not able to make contact with anyone.

Meter Reading Monitoring-

FPUA began monitoring the meter reading procedure at each of the nine home in the month of September. A supervisor from both the electric and water departments went behind the meter reader without their knowledge to check on the accuracy of the read.

All meter readings were accurate for the month of September. The results are listed in Tables 2 and 3.

Table 2. Results of Electric Meter Reading Monitoring on the Nine Study Homes.

House Number	Electric Read in kWh	Date Read	Monitoring Electric Read in kWh	Date Read	Number of Days since Initial Read	Difference in kWh	Last month's Daily kWh Use
1	17277	09/14/06	17306	09/15/06	1	29	54
2	60425	09/14/06	60494	09/15/06	1	69	77
3	95017	09/22/06	95203	09/25/06	3	186	59
4	26046	09/18/06	26148	09/19/06	1	102	129
5	89585	09/07/06	89643	09/08/06	1	58	57
6	7245	09/07/06	7282	09/08/06	1	37	50
7	66902	09/22/06	67251	09/25/06	3	349	113
8	15542	09/14/06	16086	09/20/06	6	544	94
9	25296	09/01/07	25674	09/07/06	6	378	97

Table 3. Results of Water Meter Reading Monitoring on the Nine Study Homes.

House Number	Water Read	Date Read	Monitoring Water Read	Date Read	Number of Days since Initial Read	Difference in Gallons	Last month's Daily Use in Gallons
1	123	09/14/06	124	09/15/06	1	1,000	1,000
2	1071	09/14/06	1072	09/15/06	1	1,000	1,000
3	363	09/22/06	364	09/26/06	1	1,000	1,000
4	707	09/18/06	710	09/22/06	4	3,000	1,000
5	1317	09/08/06	1318	09/11/06	3	1,000	1,000
6	1020	09/08/06	1021	09/11/06	3	1,000	1,000
7	4	09/22/06	5	09/24/06	2	1,000	1,000
8	226	09/14/06	228	09/27/06	13	2,000	1,000
9	102	09/01/07	103	09/07/06	6	1,000	1,000

Conclusion

Customer Bills –

This study indicates that there are numerous charges that may appear on a customer's bill. Customers have repeatedly complained that their "light" bills have been high. The manner in which FPUA's bills are designed, might be causing some confusion with customers. FPUA offers numerous services, but in looking at a bill, it is difficult to decipher what the services and charges are. In the future, FPUA will examine ways to make the utility bills more user friendly.

This study found that out of the two-year study period, eight out of the nine customers were late in paying their bills. Customers must keep in mind that paying the bills on time would alleviate customer charges for late fees, cut-off fees, and reconnect fees, thus making the bills lower.

Seasonal Fluctuations –

In examining all of the

Energy and fuel prices are higher than they have ever been. During a time when costs are high, it may be necessary for customers to conserve utility use. It is evident that some customers consume a high amount of utilities. Changing habits and reducing consumption will save money. Weatherizing the home will also save money. Each Home Utility Conservation Survey that FPUA conducted indicated that conservation measures were needed for each home. Some of these measures do not require any additional money, such as adjusting thermostats on appliances. Utility conservation information is available on FPUA's Website at www.fpu.com or a customer may request information from FPUA's customer service representatives at 46601600, ext. 3900.

Customers may also save money by getting their utility bills paid on time. The data analysis indicated that eight out of the nine customers had late fees or penalty charges for late payments. Getting behind in paying bills compounds the difficulty in staying current because the fees incurred increase the amount due each month.

Appendix A

Calculation of FPUA's Power Cost Adjustment

Table 4. – Sample worksheet used to calculate FPUA’s electric Power Cost Adjustment.

FORT PIERCE UTILITIES AUTHORITY ANALYSIS OF MONTHLY PCA FY 2006							
	Oct-05	Nov-05	Dec-05	Jan-06	Feb-06	Mar-06	Apr-06
BEG BAL PER GL 05-2-000-25315-0000	29,301.07	(109,659.55)	28,778.20	(54,925.44)	72,186.93	836,457.54	772,369.95
COSTS OF PURCHASED POWER:							
FMPA	4,073,201.99	3,278,048.15	2,970,862.79	3,027,378.55	3,176,071.81	2,891,760.32	2,957,445.02
FMPA - ST. LUCIE NUCLEAR	219,218.00	247,453.64	466,672.64	466,672.64	466,672.64	466,672.64	466,672.64
Total	4,292,419.99	3,525,501.79	3,437,535.43	3,494,051.19	3,642,744.45	3,358,432.96	3,424,117.66
Total Per Production Summary	4,265,752.88	3,510,852.03	3,424,110.22	3,482,683.31	3,626,206.45	3,321,159.90	3,398,685.86
Load Retention Credit (passed to cust)	14,376.61	12,447.02	11,448.43	11,171.45	10,155.25	10,763.50	12,449.79
Start-up Credits	12,290.50	2,202.74	1,976.78	196.43	6,382.75	26,509.56	25,431.80
FMPA Joint Purchasing	0.00	0.00	0.00	0.00	0.00	0.00	0.00
Working Capital Surcharge	0.00	0.00	0.00	0.00	0.00	0.00	0.00
Diff #7 - #8	0.00	0.00	0.00	0.00	0.00	0.00	(12,449.79)
Plus: Load Retention Credits							12,449.79
Revised Difference:							0.00
RETAIL SALES							
REGULAR ELECTRIC CONSUMPTION	57,353,739	43,615,558	45,377,857	43,344,850	36,192,784	44,072,065	43,779,447
STREET LIGHTS	409,504	411,210	413,200	413,314	413,314	413,314	413,613
TRAFFIC SIGNALS & SIRENS	66,332	66,437	66,437	66,437	66,437	66,437	66,437
RENTAL LIGHTS	461,191	460,530	461,191	464,405	467,604	468,317	470,915
TOTAL (1)	58,290,766	44,553,735	46,318,685	44,289,006	37,140,139	45,020,133	44,730,412
Ave Cost per kWh	0.073638	0.079129	0.074215	0.078892	0.098081	0.074598	0.076550
Ave Cost per kWh Cum		0.076384	0.075661	0.076469	0.080791	0.079759	0.079301
BASE POWER COST (2)*	0.049522	0.049522	0.049522	0.049522	0.049522	0.049522	0.049522
BASE PC RECOVERY (1*2=4)	2,886,675.31	2,206,390.06	2,293,793.92	2,193,280.16	1,839,253.96	2,229,487.03	2,215,139.46
POW COST ADJ FACTOR*	0.02650	0.02650	0.02650	0.02650	0.02650	0.02650	0.03088
POW COST ADJ GR REC TAX	0.02650	0.02650	0.02650	0.02650	0.02650	0.02650	0.03088
PCA DJ RECOVERY (1*3=5)	1,544,705.30	1,180,673.98	1,227,445.15	1,173,658.66	984,213.68	1,193,033.52	1,381,275.12
TOTAL EST POWER COST REC FROM ENG SALES (4+5=6)	4,431,380.61	3,387,064.04	3,521,239.07	3,366,938.82	2,823,467.64	3,422,520.55	3,596,414.58
PCA ADJUSTMENT							
UNDER (OVER) REC FOR MTH (7-6)	(138,960.62)	138,437.75	(83,703.64)	127,112.37	819,276.81	(64,087.59)	(172,296.92)
DOE Refund (rcvd 2/14/06)					(55,006.20)		
SO2 Credit (rcvd 2/9/06), reclassified to							(296,400.00)
ENDING BAL DR (CR)	(109,659.55)	28,778.20	(54,925.44)	72,186.93	836,457.54	772,369.95	303,673.03

Appendix B

Electric Rate Comparisons of Florida's Municipal Utilities

Table 4. – Rate Comparisons for Florida’s Municipal Electric Utilities in July 2006 (includes base rate and PCA or Fuel Cost).

CITY	Customer Charge	Base Rate (Includes	750 KWH			1,000 KWH			2,500 KWH		
			Fuel or Cost	Total	Base Rate (Includes	Fuel or Cost	Total	Base Rate (Includes	Fuel or Cost	Total	
ALACHUA	8.00	67.85	26.25	94.10	87.80	35.00	122.80	207.50	87.50	295.00	
BARTOW	6.67	52.81	38.84	91.65	68.19	51.79	119.98	160.47	129.48	289.95	
BLOUNTSTOWN	3.50	53.83	2.63	56.46	71.78	3.50	75.28	179.45	8.75	188.20	
BUSHNELL	7.40	75.39	22.25	97.64	98.05	30.00	128.05	234.03	75.00	309.03	
CHATTAHOOCHEE	4.50	55.95	18.32	74.27	73.10	24.42	97.52	176.00	61.06	237.06	
CLEWISTON	6.50	56.00	36.53	92.53	72.50	48.70	121.20	171.75	121.75	293.50	
FORT MEADE	12.96	71.39	45.00	116.39	90.86	60.00	150.86	207.71	150.00	357.71	
FORT PIERCE	G	5.35	67.43	23.16	90.59	88.12	30.88	119.00	212.28	77.20	289.48
GAINESVILLE	G	4.89	39.49	37.50	76.99	54.40	50.00	104.40	143.89	125.00	268.89
GREEN COVE SPRING	6.00	71.25	16.70	87.95	93.00	22.27	115.27	223.50	55.68	279.18	
HAVANA	6.00	68.63	29.15	97.78	89.50	38.86	128.36	214.75	97.15	311.90	
HOMESTEAD	G	5.50	58.53	28.46	86.99	76.20	37.95	114.15	182.25	94.88	277.13
JACKSONVILLE	G	5.50	38.61	29.63	68.24	49.65	39.50	89.15	115.88	98.75	214.63
JACKSONVILLE BEACH	4.50	59.68	32.02	91.70	78.07	42.69	120.76	188.43	106.73	295.16	
KEY WEST	G	6.00	65.93	33.75	99.68	85.90	45.00	130.90	205.75	112.50	318.25
KISSIMMEE	G	10.17	77.18	11.33	88.51	99.51	15.10	114.61	265.15	37.75	302.90
LAKE WORTH	G	7.42	62.55	20.63	83.18	83.40	27.50	110.90	208.50	68.75	277.25
LAKELAND	G	6.35	42.02	46.88	88.90	53.91	62.50	116.41	135.17	156.25	291.42
LEESBURG	8.72	56.75	34.50	91.25	72.76	46.00	118.76	168.82	115.00	283.82	
MOORE HAVEN	8.50	64.60	31.88	96.48	83.30	42.50	125.80	195.50	106.25	301.75	
MOUNT DORA	5.23	63.57	20.37	83.94	83.02	27.16	110.18	199.71	67.90	267.61	
NEW SMYRNA BEACH	G	5.65	59.45	23.40	82.85	77.38	31.20	108.58	184.98	78.00	262.98
NEWBERRY	7.50	62.63	39.62	102.25	81.00	52.83	133.83	191.25	132.08	323.33	
OCALA	7.00	63.77	34.50	98.27	82.69	46.00	128.69	196.23	115.00	311.23	
ORLANDO	G	7.00	44.62	32.09	76.71	57.16	42.79	99.95	147.40	121.98	269.38
QUINCY	6.00	61.14	23.70	85.14	79.52	31.60	111.12	189.81	79.00	268.81	
ST. CLOUD	G	7.28	46.40	33.37	79.78	59.45	44.50	103.95	153.30	126.86	280.16
STARKE	N/A	58.58	27.75	86.33	75.95	37.00	112.95	230.02	92.50	322.52	
TALLAHASSEE	G	5.50	42.31	59.57	101.88	54.58	79.42	134.00	128.20	198.55	326.75
VERO BEACH	G	7.21	64.29	36.15	100.44	83.31	48.20	131.51	197.46	120.50	317.96
WAUCHULA	8.62	66.37	32.47	98.84	85.62	43.29	128.91	201.12	108.23	309.35	
WILLISTON	8.00	69.38	18.45	87.83	89.84	24.60	114.44	212.60	61.50	274.10	
WINTER PARK	8.03	44.78	37.34	82.12	57.03	49.79	106.82	145.53	139.48	285.01	
For Profit Investor-Owned Utilities Listed Below.											
FL POWER & LIGHT	G	5.17	36.91	43.81	80.72	47.48	58.41	105.89	125.96	161.03	286.99
GULF POWER CO	G	10.00	46.94	23.19	70.13	59.25	30.92	90.17	133.13	77.30	210.43
PROGRESS ENERGY	G	8.03	44.78	37.34	82.12	57.03	49.79	106.82	145.53	139.48	285.01
TAMPA ELECTRIC	G	8.50	41.07	40.76	82.28	51.92	54.35	106.87	117.05	135.88	254.43

*Rates for municipal utilities INCLUDE payment-in-lieu of tax to the city's general fund. Rates for investor-owned utilities DO NOT INCLUDE franchise fee payments, which average 6% across Florida. G = Generating utility. **Total includes conservation, capacity, environmental and refund credit (if applicable).

Appendix C
Calculation of FPUA's
Purchased Gas Adjustment

Explanation of calculation:

The monthly bill computed under the appropriate rate schedule for firm gas service will be increased or decreased by an amount equal to the result of multiplying the measured or used volume of gas in CCF by the Purchased Gas Adjustment factor ("PGA") in effect at the time and determined as follows:

$$\text{PGA} = [(A + B)/C - \$0.33000] \times 1/(1 - T)$$

Where:

PGA = Estimated Purchased Gas Adjustment factor in dollars per CCF rounded to nearest one thousandth of a cent applicable to bills rendered during the period.

A = Total applicable purchased gas costs for the one-month period including, but not limited to, demand charges, commodity charges, administrative charges, charges for heating content, and other charges and adjustments necessary to compensate for temperature, losses, and pressure associated with natural gas purchases.

B = An amount to correct for the over-recovery or under-recovery of the actual applicable purchased cost of gas (True-Up Adjustment) during the latest period.

C = Estimated firm gas sales in CCF for the current period billing cycle.

T = Appropriate tax rate for any applicable taxes. Not applicable at this time.

PART A:

Gas Cost of \$278,286 – Using February 14, 2006 NYMEX Henry Hub Future Price @ \$7.12 per MMBTU.

PLUS:

- | | |
|----------------------------------|------------------------------|
| - Reservation Charge of \$12,143 | - FGU Broker Fee of \$1,710 |
| - Usage Charge of \$2,183 | - FGU Fuel Charge of \$7,289 |

PART B:

True-up included in the calculation = 201,099

PART C:

Based on past history, staff has estimated sales of 281,683 CCFs for March 2006.

Therefore,

$$\text{PGA} = [(\$278,286 + \$12,143 + \$2,183 + \$1,710 + \$7,289 + 201,099) / 281,683 \text{ CCFs}] - \$0.33$$

or

$$\$1.79 - .3300 = + \$1.46$$

Appendix D

Detailed Data of Utility Consumption and Cost Incurred in FPUA's Study Homes

Table 5. – Detailed History for House 1.

Date	EL Cons	El Cost	W Cons	W Cost	WW Cost	N Cons.	N Cost	PCA	PGA	Tax	Fee	County Fee	Misc.	Total Costs
Aug-04	0.00	0.00	0.00	16.40	11.09	0.00	0.00	14.13	0.00	17.74	0.00	0.00	16.74	76.10
Sep-04	0.00	0.00	0.00	16.40	11.09	0.00	0.00	0.00	0.00	1.64	0.81	0.00	19.09	49.03
Oct-04	0.00	0.00	0.00	16.40	11.09	0.00	0.00	0.00	0.00	0.00	0.00	0.00	19.09	46.58
Nov-04	2.00	0.17	1.00	16.40	15.06	0.00	0.00	0.04	0.00	2.37	0.00	0.00	34.09	68.13
Dec-04	6.00	5.85	2.00	16.40	19.03	0.00	0.00	0.00	0.00	1.64	0.00	0.00	19.09	62.01
Jan-05	35.00	8.25	1.00	16.40	15.06	0.00	0.00	0.24	0.00	2.34	0.00	0.00	34.09	76.38
Feb-05	69.00	11.06	1.00	16.40	15.06	2.00	12.00	0.67	1.04	3.13	0.00	0.00	19.09	78.45
Mar-05	233.00	23.38	2.00	12.58	16.45	3.00	10.66	6.17	2.64	3.81	0.00	0.00	49.09	124.78
Apr-05	601.00	55.09	8.00	28.25	42.85	9.00	19.00	18.56	10.44	8.32	54.13	0.00	19.09	255.73
May-05	672.00	60.97	8.00	28.25	42.85	35.00	45.00	17.81	51.10	9.97	19.79	0.00	19.09	294.83
Jun-05	685.00	62.04	8.00	28.25	42.85	44.00	54.00	18.15	84.48	10.49	53.08	0.00	19.09	372.43
Jul-05	713.00	64.36	6.00	23.51	34.91	13.00	23.00	22.02	10.53	8.82	3.02	0.00	19.09	209.26
Aug-05	825.00	73.63	7.00	25.88	38.88	8.00	18.00	8.07	4.16	9.39	0.00	0.00	19.09	197.10
Sep-05	829.00	73.97	8.00	28.25	42.85	0.00	10.00	21.97	0.00	9.45	18.82	0.00	19.09	224.40
Oct-05	874.00	77.69	8.00	28.25	42.85	20.00	30.00	23.16	22.80	11.13	0.84	0.00	19.09	255.81
Nov-05	961.00	84.89	8.00	28.25	42.85	16.00	26.00	29.68	9.12	11.27	68.09	0.00	19.09	319.24
Dec-05	1200.00	104.67	7.00	25.88	38.88	15.00	25.00	37.06	5.99	12.80	37.27	0.00	19.09	306.64
Jan-06	1239.00	107.91	8.00	28.25	42.85	7.00	17.00	17.12	5.07	12.54	0.00	0.00	19.09	249.83
Feb-06	1256.00	109.31	6.00	23.51	34.91	6.00	16.00	12.28	3.12	11.98	0.00	0.00	19.09	230.20
Mar-06	1257.00	109.39	9.00	30.62	46.82	9.00	19.00	12.29	4.68	12.80	0.00	0.00	19.09	254.69
Apr-06	1466.00	126.69	6.00	23.51	34.91	5.00	15.00	14.34	3.38	13.38	0.00	0.00	19.09	250.30
May-06	1533.00	132.24	7.00	25.88	38.88	6.00	16.00	14.99	3.12	14.11	0.00	0.00	19.09	264.31
Jun-06	1801.00	154.42	0.00	16.40	11.09	0.00	0.00	12.30	0.00	14.29	2.40	0.00	16.74	227.64
Jul-06	1854.00	158.81	6.00	23.51	34.91	7.00	11.42	12.66	2.61	15.72	0.00	0.00	16.74	276.38
TOTAL	18109.00	1604.62	117.00	527.43	716.98	205.00	367.08	313.71	224.28	1154.68	258.25	0.00	511.11	

Table 6. – Detailed History for House 2.

Date	EL Cons	El Cost	W Cons	W Cost	WW Cost	N Cons.	N Cost	PCA	PGA	Tax	Fee	County Fee	Misc.	Total Monthly Cost
Aug-04	2186.00	186.29	9.00	30.62	46.82	0.00	0.00	14.93	0.00	18.28	0.00	0.00	16.74	313.68
Sep-04	1653.00	142.17	9.00	30.62	46.82	0.00	0.00	11.29	0.00	14.74	0.00	0.00	16.74	262.38
Oct-04	3105.00	262.35	17.00	54.90	50.79	0.00	0.00	21.21	0.00	26.82	0.00	0.00	16.74	432.81
Nov-04	1518.00	130.99	7.00	25.88	38.88	0.00	0.00	10.37	0.00	13.37	0.00	0.00	19.09	238.58
Dec-04	1759.00	150.94	10.00	32.99	50.79	0.00	0.00	12.01	0.00	15.68	0.00	0.00	19.09	281.50
Jan-05	1880.00	160.96	13.00	41.88	50.79	0.00	0.00	12.84	0.00	17.37	0.00	0.00	19.09	302.93
Feb-05	1742.00	149.54	9.00	30.62	46.82	0.00	0.00	11.90	0.00	15.32	0.00	0.00	19.09	273.29
Mar-05	1408.00	121.89	8.00	28.25	42.85	0.00	0.00	9.62	0.00	12.88	0.00	0.00	19.09	234.58
Apr-05	995.00	87.71	8.00	28.25	42.85	0.00	0.00	9.73	0.00	10.21	0.00	0.00	19.09	197.84
May-05	1157.00	101.11	11.00	35.95	50.79	31.00	41.00	11.32	16.12	13.54	0.00	0.00	19.09	288.92
Jun-05	1825.00	156.40	14.00	44.83	50.79	11.00	21.00	17.85	5.72	18.13	0.00	0.00	19.09	333.81
Jul-05	2697.00	228.58	21.00	69.12	50.79	14.00	24.00	26.38	7.28	26.55	0.00	0.00	44.09	476.79
Aug-05	2551.00	216.49	14.00	44.83	50.79	11.00	21.00	24.95	5.72	23.06	0.00	0.00	44.09	430.93
Sep-05	2704.00	229.16	13.00	41.87	50.79	14.00	24.00	26.45	9.46	23.93	0.00	0.00	44.09	449.75
Oct-05	1949.00	166.67	8.00	28.25	42.85	9.00	19.00	26.93	6.53	17.48	0.00	0.00	44.09	351.80
Nov-05	1564.00	134.80	10.00	32.99	50.79	11.00	21.00	41.45	9.67	15.96	0.00	0.00	44.09	350.75
Dec-05	1419.00	122.80	12.00	38.91	50.79	15.00	25.00	37.60	17.10	15.80	0.00	0.00	44.09	352.09
Jan-06	1598.00	137.62	17.00	54.90	50.79	18.00	28.00	42.35	26.64	18.45	0.00	0.00	44.09	402.84
Feb-06	1258.00	109.56	11.00	35.95	50.79	10.00	20.00	33.36	19.20	13.76	0.00	0.00	44.09	326.71
Mar-06	1237.00	107.74	8.00	28.25	42.85	10.00	20.00	32.78	14.60	12.84	0.00	0.00	44.09	303.15
Apr-06	1319.00	114.52	11.00	35.95	50.79	15.00	25.00	40.73	17.40	14.58	0.00	0.00	44.09	343.06
May-06	1501.00	129.59	10.00	32.99	50.79	11.00	21.00	46.35	8.91	15.42	0.00	0.00	44.09	349.14
Jun-06	1926.00	164.76	9.00	30.62	46.82	11.00	21.00	59.47	6.27	18.26	0.00	0.00	44.09	391.29
Jul-06	1043.00	89.18	3.00	8.75	17.82	5.00	10.33	32.21	2.00	9.08	0.00	0.00	19.09	188.46
TOTAL	41994.00	3601.82	262.00	868.17	1126.44	196.00	341.33	614.08	172.62	401.51	0.00	0.00	751.11	

This report was produced in September 2006. Please call FPUA customer service for updated rates VIII and fees at 772-466-1600, ext. 3072.

Table 7. – Detailed History for House 3.

Date	EL Cons	EI Cost	W Cons	W Cost	WW Cost	N Cons.	N Cost	PCA	PGA	Tax	Fee	County Fee	Misc	Total Monthly Cost
Aug-04	1385.00	119.99	6.00	23.51	34.91	0.00	0.00	10.25	0.00	3.94	20.45	30.17	23.80	267.02
Sep-04	1152.00	100.70	3.00	16.40	23.00	0.00	0.00	8.42	0.00	3.22	0.00	22.65	23.80	198.19
Oct-04	2203.00	187.69	9.00	30.62	46.82	0.00	0.00	15.84	0.00	5.82	9.25	42.42	23.80	362.26
Nov-04	1171.00	102.27	6.00	23.51	34.91	0.00	0.00	8.79	0.00	3.46	26.58	28.21	23.80	251.53
Dec-04	1644.00	141.42	6.00	23.51	34.91	0.00	0.00	12.02	0.00	4.54	1.70	32.55	23.80	274.45
Jan-05	2138.00	182.31	6.00	23.51	34.91	0.00	0.00	15.39	0.00	5.67	4.08	37.07	23.80	326.74
Feb-05	1802.00	154.50	5.00	21.14	30.94	0.00	0.00	13.10	0.00	4.91	0.00	32.41	23.80	280.80
Mar-05	1552.00	133.81	3.00	16.40	23.00	0.00	0.00	11.39	0.00	4.33	44.44	26.94	23.80	284.11
Apr-05	1461.00	126.28	6.00	23.51	34.91	0.00	0.00	15.42	0.00	4.23	18.88	31.10	23.80	278.13
May-05	1890.00	161.78	8.00	28.25	22.94	0.00	0.00	18.48	0.00	5.12	0.00	28.50	23.80	288.87
Jun-05	1361.00	118.00	4.00	18.77	26.97	0.00	0.00	14.44	0.00	3.87	0.00	26.90	23.80	232.75
Jul-05	2431.00	206.56	9.00	30.62	46.82	0.00	0.00	24.91	0.00	6.41	0.00	44.34	23.80	383.46
Aug-05	2006.00	171.39	6.00	23.51	34.91	0.00	0.00	20.75	0.00	5.52	0.00	36.11	23.80	315.99
Sep-05	2319.00	197.29	7.00	25.88	38.88	0.00	0.00	23.81	0.00	6.26	19.74	40.60	23.80	376.26
Oct-05	1672.00	143.74	6.00	23.51	34.91	0.00	0.00	37.49	0.00	5.24	35.00	33.95	23.80	337.64
Nov-05	1316.00	114.28	7.00	25.88	38.88	0.00	0.00	37.95	0.00	4.50	0.00	32.40	23.80	277.69
Dec-05	1424.00	12.21	9.00	30.62	46.82	0.00	0.00	40.82	0.00	4.81	0.00	36.67	23.80	195.75
Jan-06	2527.00	214.51	9.00	30.62	46.82	0.00	0.00	70.05	0.00	7.88	1.60	47.88	23.80	443.16
Feb-06	1597.00	137.54	3.00	16.40	23.00	0.00	0.00	45.40	0.00	5.28	6.61	28.91	38.80	301.94
Mar-06	1573.00	135.54	5.00	21.14	30.94	0.00	0.00	44.76	0.00	5.23	4.20	31.84	23.80	297.45
Apr-06	1512.00	130.50	12.00	38.91	50.79	0.00	0.00	50.27	0.00	5.23	4.40	40.95	23.80	344.85
May-06	1465.00	126.61	10.00	32.99	50.79	0.00	0.00	48.82	0.00	5.09	20.11	38.98	23.80	347.19
Jun-06	1604.00	138.12	18.00	58.46	50.79	0.00	0.00	53.11	0.00	5.50	4.91	46.81	23.80	381.50
Jul-06	1829.00	156.74	26.00	86.90	50.79	0.00	0.00	60.06	0.00	6.16	20.65	56.28	23.80	461.38
TOTAL	41034.00	3413.78	189.00	694.57	893.36	0.00	0.00	701.74	0.00	122.22	242.60	854.64	586.20	

Table 8. – Detailed History for House 4.

Date	EL Cons	EI Cost	W Cons	W Cost	WW Cost	N Cons.	N Cost	PCA	PGA	Tax	Fee	County Fee	Misc	Total Monthly Cost
Aug-04	4054.00	340.90	17.00	54.91	50.79	0.00	0.00	27.69	0.00	33.13	25.89	0.00	16.74	550.05
Sep-04	2554.00	216.74	13.00	41.88	50.79	0.00	0.00	17.44	0.00	21.86	0.00	0.00	16.74	365.45
Oct-04	4811.00	403.56	47.00	161.56	50.79	0.00	0.00	32.86	0.00	48.83	28.96	0.00	16.74	743.30
Nov-04	2215.00	188.69	13.00	41.88	50.79	0.00	0.00	15.13	0.00	19.60	25.92	0.00	19.09	361.10
Dec-04	2209.00	188.19	16.00	51.36	50.79	0.00	0.00	15.09	0.00	6.52	24.88	0.00	19.09	355.92
Jan-05	1969.00	168.32	17.00	54.91	50.79	0.00	0.00	13.45	0.00	19.26	24.43	0.00	19.09	350.25
Feb-05	1704.00	146.39	15.00	47.80	50.79	0.00	0.00	11.64	0.00	16.80	5.25	0.00	19.09	297.76
Mar-05	1877.00	160.71	16.00	51.36	50.79	0.00	0.00	12.82	0.00	18.30	4.69	0.00	19.09	317.76
Apr-05	2065.00	176.27	15.00	47.80	50.79	0.00	0.00	20.20	0.00	19.35	4.77	0.00	19.09	338.27
May-05	3322.00	274.96	20.00	65.57	50.79	0.00	0.00	32.49	0.00	39.58	0.00	0.00	19.09	482.48
Jun-05	2648.00	224.52	14.00	44.83	50.79	0.00	0.00	25.90	0.00	22.97	0.00	0.00	19.09	388.10
Jul-05	3672.00	309.28	17.00	54.90	50.79	0.00	0.00	35.91	0.00	30.96	5.82	0.00	19.09	506.75
Aug-05	3913.00	329.23	16.00	51.35	50.79	0.00	0.00	38.27	0.00	32.13	7.50	0.00	19.09	528.36
Sep-05	3582.00	301.84	15.00	47.79	50.79	0.00	0.00	35.03	0.00	13.52	22.81	0.00	19.09	490.87
Oct-05	3349.00	282.54	13.00	41.87	50.79	0.00	0.00	58.89	0.00	28.06	7.26	0.00	19.09	488.50
Nov-05	2187.00	186.37	13.00	41.87	50.79	0.00	0.00	57.96	0.00	20.53	7.22	0.00	19.09	383.83
Dec-05	2349.00	199.78	17.00	54.90	50.79	0.00	0.00	62.25	0.00	22.98	5.65	0.00	19.09	415.44
Jan-06	2393.00	203.42	19.00	62.01	50.79	0.00	0.00	63.41	0.00	24.00	6.14	0.00	19.09	428.86
Feb-06	1569.00	135.22	11.00	35.95	50.79	0.00	0.00	41.58	0.00	15.50	6.34	0.00	19.09	304.47
Mar-06	2274.00	193.57	17.00	54.90	50.79	0.00	0.00	60.26	0.00	22.44	4.47	0.00	19.09	405.52
Apr-06	2418.00	205.48	15.00	47.79	50.79	0.00	0.00	74.67	0.00	23.02	6.02	0.00	19.09	426.86
May-06	2801.00	237.19	19.00	62.01	50.79	0.00	0.00	86.49	0.00	27.23	6.31	0.00	19.09	489.11
Jun-06	3587.00	302.24	23.00	76.23	50.79	0.00	0.00	110.77	0.00	34.37	7.24	0.00	19.09	600.73
Jul-06	3980.00	334.77	20.00	65.57	50.79	0.00	0.00	122.90	0.00	36.16	8.90	0.00	19.09	638.18
TOTAL	67502.00	5710.18	418.00	1361.00	1218.96	0.00	0.00	1073.10	0.00	597.10	246.47	0.00	451.11	

This report was produced in September 2006. Please call FPUA customer service for updated rates and fees at 772-466-1600, ext. 3072. IX

Table 9. – Detailed History for House 5.

Date	EL Cons	EI Cost	W Cons	W Cost	WW Cost	N Cons.	N Cost	PCA	PGA	Tax	Fee	County Fee	Misc	Total Monthly Cost
Aug-04	1944.00	166.25	21.00	63.13	50.79	12.00	15.64	13.83	4.10	19.77	2.18	0.00	16.74	352.43
Sep-04	1319.00	114.52	21.00	63.13	50.79	8.00	12.26	9.01	3.20	16.75	0.00	0.00	16.74	286.40
Oct-04	1231.00	107.24	23.00	76.24	50.79	9.00	13.11	8.41	3.60	16.93	19.39	0.00	16.74	312.45
Nov-04	903.00	80.09	18.00	58.47	50.79	10.00	19.60	6.17	4.00	13.14	19.51	0.00	19.09	270.86
Dec-04	911.00	80.75	11.00	35.95	50.79	13.00	23.00	6.22	5.20	11.07	15.00	0.00	19.09	247.07
Jan-05	868.00	77.19	8.00	28.25	42.85	12.00	22.00	5.93	4.80	9.97	3.77	0.00	19.09	213.85
Feb-05	531.00	49.30	8.00	28.25	42.85	11.00	21.00	3.63	4.40	7.69	2.64	0.00	19.09	178.85
Mar-05	700.00	63.29	10.00	32.99	50.79	13.00	23.00	6.85	6.76	9.46	0.00	0.00	19.09	212.23
Apr-05	630.00	57.50	8.00	28.25	42.85	9.00	19.00	6.16	4.68	8.36	0.00	0.00	19.09	185.89
May-05	1824.00	156.32	10.00	32.99	50.79	14.00	24.00	17.84	7.28	12.61	0.00	0.00	19.09	320.92
Jun-05	1573.00	135.54	8.00	28.25	42.85	9.00	19.00	15.38	4.68	14.71	0.00	0.00	19.09	279.50
Jul-05	2445.00	207.72	8.00	28.25	42.85	8.00	18.00	23.91	4.16	20.59	4.19	0.00	19.09	368.76
Aug-05	2284.00	194.39	12.00	38.91	50.79	10.00	20.00	22.34	6.76	20.63	52.47	0.00	19.09	425.38
Sep-05	2051.00	175.11	11.00	35.95	50.79	11.00	21.00	20.06	7.44	18.80	0.00	0.00	19.09	348.24
Oct-05	1219.00	106.25	9.00	30.62	46.82	9.00	19.00	32.30	7.91	13.16	0.00	0.00	19.09	275.15
Nov-05	802.00	71.73	10.00	32.99	50.79	12.00	22.00	21.25	13.68	10.64	1.13	0.00	19.09	243.30
Dec-05	801.00	71.65	9.00	30.62	46.82	15.00	25.00	21.23	22.20	10.69	15.00	0.00	19.09	262.30
Jan-06	712.00	64.28	5.00	21.14	30.94	11.00	2.00	18.87	21.12	8.40	0.00	0.00	19.09	185.84
Feb-06	462.00	43.59	6.00	23.51	34.91	8.00	18.00	12.24	11.68	6.72	0.00	0.00	19.09	169.74
Mar-06	688.00	62.30	8.00	28.25	42.85	11.00	21.00	21.25	12.76	9.03	0.00	0.00	19.09	216.53
Apr-06	1005.00	88.54	7.00	25.88	38.88	9.00	19.00	31.03	7.29	11.00	0.00	0.00	19.09	240.71
May-06	1409.00	121.97	9.00	30.62	46.82	13.00	23.00	43.51	7.41	14.59	0.00	0.00	19.09	307.01
Jun-06	1856.00	158.98	8.00	28.25	42.85	5.00	15.00	57.31	2.00	17.28	0.00	0.00	19.09	340.76
Jul-06	2069.00	176.60	7.00	25.88	38.88	7.00	17.00	63.89	1.95	18.69	0.00	0.00	19.09	361.98
TOTAL	30237.00	2631.10	255.00	856.77	1091.92	249.00	451.61	488.62	179.06	320.68	135.28	0.00	451.11	

Table 10. – Detailed History for House 6.

Date	EL Cons	EI Cost	W Cons	W Cost	WW Cost	N Cons.	N Cost	PCA	PGA	Tax	Fee	County Fee	Misc	Total Monthly Cost
Aug-04	1436.00	124.21	11.00	35.95	50.79	0.00	0.00	10.26	0.00	14.32	3.79	0.00	26.98	266.30
Sep-04	1162.00	101.53	6.00	23.51	34.91	0.00	0.00	8.26	0.00	11.89	0.00	0.00	26.98	207.08
Oct-04	991.00	87.38	3.00	16.40	23.00	0.00	0.00	7.09	0.00	10.04	4.11	0.00	26.98	175.00
Nov-04	908.00	80.51	5.00	21.14	30.94	0.00	0.00	6.52	0.00	9.96	5.37	0.00	29.33	183.77
Dec-04	1315.00	114.19	5.00	21.14	30.94	0.00	0.00	9.30	0.00	12.66	0.00	0.00	29.33	217.56
Jan-05	1114.00	97.56	5.00	21.14	30.94	0.00	0.00	7.93	0.00	11.33	3.30	0.00	29.33	201.53
Feb-05	1045.00	91.84	7.00	25.88	38.88	0.00	0.00	7.46	0.00	11.35	3.32	0.00	29.33	208.06
Mar-05	1161.00	101.45	6.00	23.51	34.91	0.00	0.00	11.81	0.00	11.97	3.42	0.00	29.33	216.40
Apr-05	614.00	56.17	9.00	30.62	46.82	0.00	0.00	6.46	0.00	9.01	0.00	0.00	29.33	178.41
May-05	1955.00	167.17	8.00	28.25	42.85	0.00	0.00	19.12	0.00	17.80	0.00	0.00	29.33	304.52
Jun-05	1281.00	111.38	5.00	21.14	30.94	0.00	0.00	12.99	0.00	12.54	0.00	0.00	29.33	218.32
Jul-05	2636.00	223.53	6.00	23.51	34.91	0.00	0.00	26.24	0.00	21.95	3.27	0.00	29.33	362.74
Aug-05	2302.00	195.89	4.00	18.77	26.97	0.00	0.00	22.97	0.00	19.18	4.24	0.00	29.33	317.35
Sep-05	2078.00	177.35	5.00	21.14	30.94	0.00	0.00	20.78	0.00	17.90	4.70	0.00	29.33	302.14
Oct-05	1486.00	128.35	4.00	18.77	26.97	0.00	0.00	40.63	0.00	14.34	4.46	0.00	29.33	262.85
Nov-05	1230.00	107.16	4.00	18.77	26.97	0.00	0.00	33.85	0.00	12.51	0.00	0.00	29.33	228.59
Dec-05	1033.00	90.85	3.00	16.40	23.00	0.00	0.00	28.62	0.00	10.87	0.00	0.00	29.33	199.07
Jan-06	664.00	60.31	3.00	16.40	23.00	0.00	0.00	18.85	0.00	8.22	0.00	0.00	29.33	156.11
Feb-06	1001.00	88.20	4.00	18.77	26.97	0.00	0.00	27.78	0.00	10.88	0.00	0.00	29.33	201.93
Mar-06	811.00	72.47	4.00	18.77	26.97	0.00	0.00	26.49	0.00	9.63	3.03	0.00	29.33	186.69
Apr-06	1228.00	106.99	6.00	23.51	34.91	0.00	0.00	39.37	0.00	13.12	0.00	0.00	29.33	247.23
May-06	1448.00	125.20	6.00	6.00	23.51	0.00	0.00	46.16	0.00	14.71	0.00	0.00	29.33	244.91
Jun-06	1504.00	129.84	7.00	25.88	38.88	0.00	0.00	47.89	0.00	15.36	0.00	0.00	29.33	287.18
Jul-06	1737.00	149.12	4.00	18.77	26.97	0.00	0.00	55.09	0.00	16.35	4.31	0.00	29.33	299.94
TOTAL	32140.00	2788.65	130.00	514.14	766.89	0.00	0.00	541.92	0.00	317.89	47.32	0.00	696.87	

Table 11. – Detailed History for House 7.

Date	EL Cons	EI Cost	W Cons	W Cost	WW Cost	N Cons.	N Cost	PCA	PGA	Tax	Fee	County Fee	Misc	Total Monthly Cost
Aug-04	2818.00	238.60	5.00	21.14	30.94	12.00	15.64	19.25	4.47	7.11	75.67	39.72	0.00	452.54
Sep-04	1259.00	109.56	4.00	18.77	26.97	7.00	11.42	8.60	2.60	3.38	0.00	23.82	0.00	205.12
Oct-04	4530.00	380.30	7.00	25.88	38.88	17.00	19.87	30.94	6.80	11.21	15.11	58.57	0.00	587.56
Nov-04	1468.00	126.86	4.00	18.77	26.97	9.00	15.80	10.03	3.60	4.00	63.31	25.73	0.00	295.07
Dec-04	1872.00	160.30	8.00	28.25	42.85	14.00	24.00	12.79	5.60	5.18	30.84	45.11	0.00	354.92
Jan-05	1913.00	163.69	3.00	16.40	23.00	16.00	26.00	13.07	6.40	5.35	20.16	28.24	0.00	302.31
Feb-05	1540.00	132.82	9.00	30.62	46.82	13.00	23.00	10.52	5.20	4.39	6.88	34.33	0.00	294.58
Mar-05	1457.00	125.95	9.00	30.62	46.82	15.00	25.00	9.95	6.00	4.26	5.58	33.57	0.00	287.75
Apr-05	1673.00	143.82	13.00	41.88	50.79	16.00	26.00	16.36	8.32	4.98	40.25	39.61	0.00	372.01
May-05	2722.00	230.65	27.00	90.45	50.79	18.00	28.00	26.62	9.36	7.55	0.00	61.51	0.00	504.93
Jun-05	2784.00	235.78	7.00	25.88	38.88	0.00	10.00	27.23	0.00	7.00	0.00	42.99	0.00	387.76
Jul-05	4025.00	338.50	10.00	32.99	50.79	21.00	31.00	39.36	10.92	10.74	20.82	58.51	0.00	593.63
Aug-05	3319.00	280.06	7.00	25.88	38.88	9.00	19.00	32.46	4.68	8.61	23.59	47.97	0.00	481.13
Sep-05	3954.00	332.62	11.00	35.95	50.79	12.00	22.00	38.67	8.11	10.29	71.86	59.39	0.00	629.68
Oct-05	2749.00	232.88	8.00	28.25	42.85	13.00	23.00	57.00	10.51	8.29	43.37	45.80	0.00	491.95
Nov-05	904.00	80.17	5.00	21.14	30.94	10.00	20.00	23.96	8.79	3.42	21.73	23.06	0.00	233.21
Dec-05	1574.00	135.63	5.00	21.14	30.94	14.00	24.00	41.71	15.96	5.58	0.00	29.90	0.00	304.86
Jan-06	2704.00	229.16	9.00	30.62	46.82	15.00	25.00	71.66	22.20	8.41	4.57	47.73	0.00	486.17
Feb-06	1710.00	146.89	6.00	23.51	34.91	13.00	23.00	45.32	24.96	5.53	117.22	32.86	0.00	454.20
Mar-06	927.00	82.08	5.00	21.14	30.94	12.00	22.00	24.57	17.52	3.30	55.05	23.31	137.06	416.97
Apr-06	1753.00	150.45	17.00	54.90	50.79	10.00	20.00	54.13	11.60	5.72	18.37	45.53	55.30	466.79
May-06	2356.00	200.36	13.00	41.87	50.79	11.00	21.00	72.75	8.91	7.51	70.90	48.53	55.30	577.92
Jun-06	3422.00	288.59	15.00	47.79	50.79	14.00	24.00	105.67	7.98	10.76	6.78	61.09	55.30	658.75
Jul-06	3450.00	290.91	4.00	18.77	26.97	13.00	23.00	106.54	5.19	10.87	23.95	48.15	55.30	609.65
TOTAL	56883.00	4836.63	211.00	752.61	960.91	304.00	521.73	899.16	215.68	163.44	736.01	1005.03	358.26	

Table 12. – Detailed History for House 8.

Date	EL Cons	EI Cost	W Cons	W Cost	WW Cost	N Cons.	N Cost	PCA	PGA	Tax	Fee	County Fee	Misc	Total Monthly Cost
Aug-04	2870.00	242.90	4.00	18.77	26.97	14.00	17.33	19.60	5.22	22.22	6.47	0.00	16.74	376.22
Sep-04	1720.00	147.71	3.00	16.40	23.00	12.00	15.64	11.75	4.45	14.27	0.00	0.00	16.74	249.96
Oct-04	3981.00	334.86	7.00	25.88	38.88	16.00	19.02	27.19	6.40	30.39	3.75	0.00	16.74	503.11
Nov-04	1639.00	141.01	3.00	16.40	23.00	12.00	16.59	111.19	4.80	13.77	0.00	0.00	16.74	343.50
Dec-04	1454.00	125.70	5.00	21.14	30.94	17.00	27.00	9.93	8.99	13.32	0.00	0.00	19.09	256.11
Jan-05	2229.00	189.84	6.00	23.51	34.91	21.00	31.00	15.22	8.40	18.86	0.00	0.00	19.09	340.83
Feb-05	1813.00	155.41	4.00	18.77	26.97	18.00	28.00	12.38	7.20	15.52	5.11	0.00	19.09	288.45
Mar-05	1442.00	124.70	4.00	18.77	26.97	15.00	25.00	9.85	6.00	12.94	0.00	0.00	19.09	243.32
Apr-05	1614.00	138.94	3.00	16.40	23.00	15.00	25.00	15.78	7.80	14.02	0.00	0.00	19.09	260.03
May-05	2567.00	217.83	6.00	23.51	34.91	18.00	28.00	25.11	9.36	21.26	0.00	0.00	19.09	379.07
Jun-05	2759.00	233.71	3.00	16.40	23.00	11.00	21.00	26.98	5.72	21.57	0.00	0.00	19.09	367.47
Jul-05	2908.00	246.05	3.00	16.40	23.00	10.00	20.00	28.44	5.20	22.60	0.00	0.00	19.09	380.78
Aug-05	2863.00	242.33	3.00	16.40	23.00	12.00	22.00	28.00	8.11	22.36	0.00	0.00	19.09	381.29
Sep-05	2911.00	246.29	9.00	30.62	46.82	14.00	24.02	43.68	10.35	24.58	5.72	0.00	19.09	451.17
Oct-05	1751.00	150.28	4.00	18.77	26.97	13.00	23.00	46.40	11.42	15.98	0.00	0.00	19.09	311.91
Nov-05	1595.00	137.36	4.00	18.77	26.97	18.00	28.00	42.27	20.52	15.22	4.68	0.00	19.09	312.88
Dec-05	2066.00	176.35	25.00	83.34	50.79	22.00	32.00	54.75	32.56	24.84	0.00	0.00	19.37	474.00
Jan-06	1233.00	107.40	6.00	23.51	34.94	16.00	26.00	32.67	30.72	12.63	7.11	0.00	19.16	294.14
Feb-06	1906.00	163.11	4.00	18.77	26.97	27.00	37.00	50.51	39.42	17.48	4.31	0.00	19.74	377.31
Mar-06	1832.00	156.98	5.00	21.14	30.94	18.00	28.00	56.57	20.88	16.95	0.00	0.00	19.54	351.00
Apr-06	2021.00	172.63	8.00	28.25	42.85	14.00	24.00	62.41	11.34	18.86	0.00	0.00	19.66	380.00
May-06	2886.00	244.23	5.00	21.14	30.94	17.00	27.00	89.12	9.69	24.57	0.00	0.00	19.31	466.00
Jun-06	2862.00	242.23	4.00	18.77	26.97	11.00	21.00	88.38	4.39	23.95	0.00	0.00	19.31	445.00
Jul-06	3239.00	273.44	5.00	21.14	30.94	11.00	21.00	100.02	3.07	26.92	6.68	0.00	19.47	502.68
TOTAL	51291.00	4368.39	129.00	534.20	707.68	358.00	569.27	988.60	276.79	442.86	37.36	0.00	434.86	

This report was produced in September 2006. Please call FPUA customer service for updated rates and fees at 772-466-1600, ext. 3072. XI

Table 13. – Detailed History for House 9.

Date	EL Cons	EI Cost	W Cons	W Cost	WW Cost	N Cons.	N Cost	PCA	PGA	Tax	Fee	County Fee	Misc.	Total Monthly Cost
Aug-04	3549.00	299.10	2.00	16.40	0.00	0.00	0.00	35.97	0.00	38.05	5.88	0.00	16.74	412.14
Sep-04	1538.00	132.65	6.00	23.51	0.00	0.00	0.00	10.50	0.00	13.27	2.95	0.00	16.74	199.62
Oct-04	3576.00	301.34	7.00	25.88	0.00	0.00	0.00	24.42	0.00	27.05	0.00	0.00	16.74	395.43
Nov-04	2332.00	198.37	1.00	16.40	0.00	0.00	0.00	15.93	0.00	16.88	0.00	0.00	19.09	266.67
Dec-04	560.00	51.70	1.00	16.40	0.00	0.00	0.00	3.82	0.00	6.05	0.00	0.00	19.09	97.06
Jan-05	2049.00	174.95	1.00	16.40	0.00	0.00	0.00	13.99	0.00	15.95	1.01	0.00	19.09	241.39
Feb-05	3518.00	296.53	2.00	16.40	0.00	0.00	0.00	24.03	0.00	25.72	0.00	0.00	19.09	381.77
Mar-05	3272.00	276.17	2.00	16.40	0.00	0.00	0.00	32.00	0.00	24.33	15.00	0.00	19.09	382.99
Apr-05	240.00	25.21	1.00	16.40	0.00	0.00	0.00	2.35	0.00	3.94	0.00	0.00	19.09	66.99
May-05	1423.00	117.78	2.00	16.40	0.00	0.00	0.00	13.92	0.00	11.92	0.00	0.00	19.09	179.11
Jun-05	1926.00	164.76	2.00	16.40	0.00	0.00	0.00	18.84	0.00	15.28	0.00	0.00	19.09	234.37
Jul-05	3003.00	253.90	2.00	16.40	0.00	0.00	0.00	29.37	0.00	22.59	3.52	0.00	19.09	344.87
Aug-05	2118.00	180.66	3.00	16.40	0.00	0.00	0.00	20.71	0.00	16.57	0.00	0.00	19.09	253.43
Sep-05	2533.00	215.01	1.00	16.40	0.00	0.00	0.00	24.77	0.00	19.36	0.00	0.00	19.09	294.63
Oct-05	1815.00	155.58	2.00	16.40	0.00	0.00	0.00	48.10	0.00	15.30	4.42	0.00	19.09	258.89
Nov-05	954.00	84.31	3.00	16.40	0.00	0.00	0.00	25.28	0.00	9.15	0.00	0.00	19.09	154.23
Dec-05	1042.00	91.60	4.00	18.77	0.00	0.00	0.00	27.61	0.00	10.02	2.31	0.00	19.09	169.40
Jan-06	824.00	73.55	13.00	41.87	0.00	0.00	0.00	21.84	0.00	10.76	0.00	0.00	19.98	168.00
Feb-06	794.00	71.07	2.00	16.40	0.00	0.00	0.00	21.04	0.00	8.01	0.00	0.00	19.48	136.00
Mar-06	766.00	68.75	9.00	30.62	0.00	0.00	0.00	23.65	0.00	9.31	0.00	0.00	19.67	152.00
Apr-06	874.00	77.69	6.00	23.51	0.00	0.00	0.00	26.99	0.00	9.40	0.00	0.00	19.41	157.00
May-06	753.00	67.68	4.00	18.77	0.00	0.00	0.00	23.25	0.00	8.05	0.00	0.00	19.25	137.00
Jun-06	1201.00	104.76	4.00	18.77	0.00	0.00	0.00	37.09	0.00	11.28	2.06	0.00	19.10	193.06
Jul-06	2149.00	183.22	5.00	21.14	0.00	0.00	0.00	66.36	0.00	18.40	0.00	0.00	19.88	309.00
TOTAL	42809.00	3666.34	85.00	468.84	0.00	0.00	0.00	591.83	0.00	366.64	37.15	0.00	454.25	232.71

This report was produced in September 2006. Please call FPUA customer service for updated rates and fees at 772-466-1600, ext. 3072. XII